

BUILDING EMERGENCY ACTION PLAN

Institute for Genomic Biology #1080 / 1206 West Gregory Drive, Urbana IL.

In any emergency situation you have a choice: **RUN**, **HIDE**, or **FIGHT**.

Only proceed if safe to do so.

RUN (GET OUT)

Evacuation Assembly Areas¹

1. The sidewalk on the east side of the Morrow Plots
2. Parking garage F-29 (1201 S. Dorner Dr.)

HIDE (STAY IN)

Storm Refuge Areas²

1. Lower Level Corridors
2. Tunnels between IGB & ERML

Security Threat¹

1. Secure classroom.
2. Secure your office.

ACTIVE THREAT

RUN

If you can safely leave the building, **RUN**.

HIDE

If you cannot safely leave, find a safe place to **HIDE**.

FIGHT

If you cannot RUN away safely or cannot HIDE, be prepared to **FIGHT** for your life.

NEED HELP?

Areas of Rescue Assistance²

1. All stairwell landings

¹ Contact Office of Campus Emergency Planning at 217-333-1216 to identify appropriate locations.

² Contact Code Compliance & Fire Safety at 217-265-5268 to identify appropriate locations.

BUILDING EMERGENCY ACTION PLAN

Institute for Genomic Biology #1080 / 1206 West Gregory Drive, Urbana IL.

Emergency Response Recommendations

The Department of Homeland Security and the University of Illinois at Urbana-Champaign Office of Campus Emergency Planning recommend the following three responses to any emergency on campus: **RUN > HIDE > FIGHT**

Only follow these actions if safe to do so. When in doubt, follow your instincts—you are your own best advocate!

RUN

Action taken to leave an area for personal safety.

- Take the time now to learn the different ways to leave your building **before** there is an emergency.
- Evacuations are mandatory for fire alarms and when directed by authorities. **No exceptions!**
- Evacuate immediately. Pull manual fire alarm to prompt a response for others to evacuate.
- Take critical personal items only (keys, purse, and outerwear) and close doors behind you.
- Assist those who need help, but carefully consider whether you may put yourself at risk.
- Look for **EXIT** signs indicating potential egress/escape routes.
- If you are not able to evacuate, go to an Area of Rescue Assistance.
- Evacuate to Evacuation Assembly Area and remain until additional instructions are given.
- Alert authorities to those who may need assistance.
- Do not re-enter building until informed by emergency response personnel that it is safe to return.

ACTIVE THREAT:

- If it is safe to do so run out of the building. Get as far away as possible. Do not go to the Evacuation Assembly Area.
-

HIDE

Action taken to seek immediate shelter indoors when emergency conditions do not warrant or allow evacuation, such as for severe weather.

- Take the time now to learn the different ways to seek shelter within your building **before** there is an emergency.
- If you are outside, proceed to the nearest protective building.
- If sheltering-in-place due to severe weather, proceed to the identified Storm Refuge Area or to the lowest, most interior area of the building away from windows or hazardous equipment or materials.

ACTIVE THREAT:

- Lock or barricade your area.
 - Get to a place where the threat cannot see you.
 - Place cell phones on **silent**.
 - Do not make any noise.
 - Do not come out until you receive an Illini-Alert advising you it is safe.
-

FIGHT

Action taken as a last resort to increase your odds for survival.

ACTIVE THREAT:

- If you cannot run away safely or cannot hide, **be prepared to fight with anything available to increase your odds for survival.**
-

BUILDING EMERGENCY ACTION PLAN

Institute for Genomic Biology #1080 / 1206 West Gregory Drive, Urbana IL.

Emergency Notification Systems

University Notifications — The University of Illinois at Urbana-Champaign **MAY** utilize any of the following mechanisms to notify the campus community of an emergency situation:

- **Illini-Alert Emergency Text Notification System** — Illini-Alert is an “opt-in” system designed to deliver text messages to those who have registered for the service. Illini-Alert automatically triggers mass mail, emergency web alerts, Facebook and Twitter notifications. Sign up at <http://emergency.illinois.edu/>.
- **Public Broadcast Media Outlets** — The campus will utilize all necessary television and radio outlets to provide emergency information to the campus community.
- **NOAA Weather Radios** — The National Weather Service in Lincoln, Illinois, will post an alert message on NOAA weather radios.
- **Cable Channel UI-7** — Comcast Cable channel 7 will provide a scripted message on the bottom of the television screen. This can be utilized either before or after the Emergency Alert System is used.
- **265-UIPD** — An emergency voice message system will be provided via this telephone number to provide emergency information.
- **Telephone Alert System** — A systematic telephone call list or “telephone tree” designed to notify individuals throughout campus.

Access to University Notification mechanisms may be limited for occupants during an emergency. Buildings may need to provide their own Building and Department Internal Emergency Notifications.

Building and Department Internal Emergency Notifications - Individual buildings and departments may utilize their own mechanisms for communicating emergency information (i.e.: bullhorns, telephone trees, public address systems, and face-to-face contact). Ensure the following list is comprehensive enough to provide coverage for all areas. The following emergency notification system(s) and individuals have been identified specifically for your building to provide emergency information:

Emergency Notification System	Primary Communicator	Backup Communicator
Internal email system	Nick Vasi	Dan Davidson
IGB website	Nick Vasi	Dan Davidson
Face-to-face contact	Floor Coordinators	Backup Coordinators

BUILDING EMERGENCY ACTION PLAN

Institute for Genomic Biology #1080 / 1206 West Gregory Drive, Urbana IL.

Floor Coordinators

Individuals responsible for assisting with the orderly evacuation or sheltering-in-place of all personnel within their area of responsibility and physically accounting for those individuals once convened at the evacuation assembly area(s).

Role of Floor Coordinators

- All actions should be done only if it is safe to do so.
- Emergency response personnel (police/fire) have full authority to order an evacuation or shutdown (see Appendix C if applicable). Floor Coordinators and the Building Emergency Management Team can initiate an evacuation and/or shutdown of the building.
- Individuals identified as Floor Coordinators assume the role voluntarily and understand they are not considered emergency responders.
- Floor Coordinators must be physically and emotionally able to perform the necessary functions of providing assistance with notification, evacuation or sheltering-in-place. (This may include assisting persons with functional needs.)
- Floor Coordinators should report observations of persons in need of rescue assistance to emergency responders or Building Emergency Management Team members.
- Floor Coordinators should report observed damage of building systems to emergency responders or Building Emergency Management Team members.

Floor Coordinators and Areas of Responsibility

Floor Coordinator	Backup Coordinator	Area of Responsibility
Robert Mann	Jesse Southern	Gatehouse, Array Café, Mechanical rooms
Austin Cyphersmith	Glen Fried	Core Facilities
Ben Leslie	Farhan Chowhurdy	Concourse lab
Jing Dong	Kat Grennan	GEGC, 1500 Lab
Kate Janssen	Jianping Wang	EBI, 1200 Lab
Amy Ahmed-Cash	Huimin Zhang	GBB, 2500 Lab
Jess Beaudoin	Derek Milner	ReBTE, 2200 Lab
Mindy Baughman	Amy Weckle	BCXT / HMS 3500 Lab
Ann Hyoun-Sook	Caitlin Deane	MMG, 3200 Lab

BUILDING EMERGENCY ACTION PLAN

Institute for Genomic Biology #1080 / 1206 West Gregory Drive, Urbana IL.

The following information has been voluntarily provided by those who have self-identified themselves as having a functional need. This information, since it is part of the BEAP, will be shared with employees within this building.

Persons with Functional Needs

The following are **self-identified** persons with functional needs who may request evacuation, shelter-in-place or any other types of reasonable assistance during an emergency:

	Name	Cell	Office Phone	Location
Person	None identified			
Buddy				
Special Need				

	Name	Cell	Office Phone	Location
Person				
Buddy				
Special Need				

	Name	Cell	Office Phone	Location
Person				
Buddy				
Special Need				

	Name	Cell	Office Phone	Location
Person				
Buddy				
Special Need				

	Name	Cell	Office Phone	Location
Person				
Buddy				
Special Need				

	Name	Cell	Office Phone	Location
Person				
Buddy				
Special Need				

	Name	Cell	Office Phone	Location
Person				
Buddy				
Special Need				

BUILDING EMERGENCY ACTION PLAN

Institute for Genomic Biology #1080 / 1206 West Gregory Drive, Urbana IL.

Building Emergency Management Team Contact Information

Name	Cell	Office Phone	Home Phone	Email
Robert Mann (Safety Coordinator)	840-7964	244-8346	446-7990	bobmann@illinois.edu
Jesse Southern (Facilities Manager)	898-4456	244-1834	n/a	jsouther@illinois.edu
Nick Vasi (Dir of Communications)	(617)360-1013	333-0873	n/a	nvasi@illinois.edu
Lyndon Goodly, DAR Director	217-778-9733	217-333-4317	n/a	goodly@illinois.edu
Sarah Allison, DAR Asst Dir Clinical Vet	708-363-3280	217-265-6819	n/a	allison3@illinois.edu
Jennifer Criley, DAR Asst Dir Clinical Vet	217-714-2470	217-265-8232	n/a	crileyj@illinois.edu
Tonja Henze, DAR Coordinator	217-493-6633	217-333-6672	n/a	thenze@illinois.edu

Attributes of Building Emergency Management Team Members

- May have authority to make overall decisions for the building and/or department.
- Has thorough knowledge of the building's operational needs.
- Able and willing to serve as a liaison to emergency responders and/or University administrators regarding, but not limited to, emergency needs, status reports, communications.
- May distribute information to building occupants or gather information needed for dissemination to the Office of Public Affairs.
- May maintain financial and administrative records.
- Should have understanding of other team member's roles and responsibilities to provide team continuity and support if one or more members are unavailable during emergency.

Roles of Building Emergency Management Team Members

- Planning and Preparedness Actions
 - Assist with identifying Evacuation Assembly Area(s).
 - Assist with identifying Storm Refuge Area(s).
 - Assist with identifying Command Post Location.
 - Assist with identifying Areas of Rescue Assistance.
 - Establish Building and Departmental Internal Emergency Notification list.
 - Identify Floor Coordinators and provide proper training and/or guidance.
 - Solicit the list of **Self-Identified** Persons with Functional Needs.
 - Prepare and submit BEAP to Office of Campus Emergency Planning for approval.
 - Review and update BEAP annually.
 - Create and establish annual training and exercise schedules to test functionality of BEAP.
- Response Actions
 - Initiate Building and Departmental Internal Emergency Notifications to occupants when emergency has been verified.
 - Deploy Floor Coordinators to evacuate or shelter-in-place as required.
 - Building Emergency Management Team Members report to designated Command Post.

If the emergency requires the **BUILDING EMERGENCY MANAGEMENT TEAM**:

Building Command Post

1. Rm 350B Edward R. Madigan Lab, 1201 W. Gregory Dr.

BUILDING EMERGENCY ACTION PLAN

Institute for Genomic Biology #1080 / 1206 West Gregory Drive, Urbana IL.

Resource List

METCAD (Metropolitan Computer-Aided Dispatch) — 911

Primary public safety consolidated dispatch center serving Champaign County for ALL police, fire, and emergency medical service (EMS) response. If you require any type of emergency response, call 911 from a cellular or any landline telephone.

See also: <http://metcad911.org/>

University Police — 217-333-1216

Non-emergency/non-police response number for information on public safety, personal safety, and workplace safety.

See also: <http://publicsafety.illinois.edu/>

Office of Campus Emergency Planning — 217-333-1216

Serves as the focal point for emergency planning and preparedness questions, issues and activities.

See also: <http://publicsafety.illinois.edu/emergencyplanning/>

Code Compliance and Fire Safety — 217-265-5268

Coordinates fire and life safety programs and the building and fire code compliance functions for the campus.

See also: <http://www.fs.uiuc.edu/planning/firesafety/ccfs.cfm>

Facilities and Services — 217-333-0340

Provides maintenance and repair, utility services, construction, engineering, facilities planning and custodial services for University-owned buildings/facilities.

See also: <http://www.fs.illinois.edu/>

Division of Research Safety — 217-333-2755

Assists campus units in identifying and managing biological, chemical and radiological hazards within the campus environment.

See also: <http://www.drs.illinois.edu/>

Office of Public Affairs — 217-333-5010

Determines what information to disseminate to the media before, during, and after an emergency. The Office of Public Affairs will determine, at the time of the incident, who within the building is authorized to disseminate information to the media.

See also: <http://publicaffairs.illinois.edu/>

BUILDING EMERGENCY ACTION PLAN

Institute for Genomic Biology #1080 / 1206 West Gregory Drive, Urbana IL.

Definitions

Area of Rescue Assistance — An area where people, including those with functional needs, can go to await assistance if they are not able to evacuate or get to another area of safety.

Building Command Post — A physical or virtual Command Post utilized by Building Emergency Management Team members to proactively manage an emergency or disaster.

Building Emergency Action Plan (BEAP) — A document that consists of emergency procedures to help facilitate and organize building occupant actions during an emergency.

Building Evacuation — Action taken to leave an area for personal safety.

Emergency Responders — Individuals specifically trained for emergency response, including police, fire, ambulance, public health and public works personnel.

Evacuation Assembly Area — The location where all evacuees will convene once an order to evacuate is given.

Floor Coordinators — Individuals responsible for assisting with the orderly evacuation or sheltering-in-place of all personnel within their area of responsibility and physically accounting for those individuals once convened at the evacuation assembly area(s).

Functional Needs — The needs of an individual who under usual circumstances is able to function on their own or with support systems. However, during an emergency, their level of independence may be challenged.

Shelter-in-Place — Action taken to seek immediate shelter indoors when emergency conditions do not warrant or allow evacuation.

Storm Refuge Area — Specific locations within University buildings/facilities that provide reasonable protection from severe weather. Not all University buildings/facilities have Storm Refuge Areas.

BUILDING EMERGENCY ACTION PLAN

Institute for Genomic Biology #1080 / 1206 West Gregory Drive, Urbana IL.

Preparedness

Emergency preparedness is ultimately the responsibility of every faculty, staff, student, and visitor at the University of Illinois at Urbana-Champaign. Every occupant of a building should prepare for emergencies and disasters through the following methods:

- Sign up for the campus' emergency messaging system called "Illini-Alert" at: <http://emergency.illinois.edu/>.
- Keep an Emergency Response Guide near your workspace. If you do not have one, request one through Office of Campus Emergency Planning (333-1216) or download at: <http://publicsafety.illinois.edu/emergencyplanning/ERG.pdf>
- "Like" Illini-Alert - University of Illinois at Urbana-Champaign and University of Illinois Police on Facebook.
- Follow Illini-Alert @IlliniAlert, UIPD @UIPD and Illinois Crime Alert @CrimeAlertIL on Twitter.
- Take the time to visit the Division of Public Safety's website at: <http://publicsafety.illinois.edu/> and educate yourself on the resources available to you.
- Make plans and preparations before an incident occurs.
- Use the "buddy system" when planning for emergency response actions.
- Maintain accountability of your personal belongings.
- Keep your work area(s) clean and free of debris and other combustible materials.
- Become familiar with your work area(s) and building. Pay attention to the location of evacuation maps (if available), fire extinguishers, fire alarm pull stations, and other fire and life safety equipment in the building.
- Recognize potential fire hazards and report them immediately.
- Remain aware of your surroundings and immediately call 911 to report suspicious persons or activities.
- Actively participate in safety training, including but not limited to fire extinguisher training, fire evacuation drills, first aid training and self-defense training.
- Annually review the building emergency plan and make recommendations for improvement to your Emergency Management Team Members.
- Create a preparedness kit to keep in or near your workspace. Visit <http://ready.gov/>.

This Building Emergency Action Plan (BEAP) is to be used in conjunction with the Emergency Response Guide (ERG), which provides recommendations for response actions to specific emergency events:

<http://publicsafety.illinois.edu/emergencyplanning/ERG.pdf>

Institute for Genomic Biology #1080 / 1206 West Gregory Drive, Urbana IL.

[illegible]

Champaign.

Director of Public Safety Jeffrey T. Christensen date: 6/04/14

Lieutenant of Emergency Planning [Signature] #275 date: 6/4/14

Associate Director Campus Code Compliance & Fire Safety Craig D. Hart date: 6/4/14

Senior Administrator(s) [Signature] date: 6/7/14

[Signature] date: 7/2/14

date:

BEAP-UI-2014-v2

BUILDING EMERGENCY ACTION PLAN

Institute for Genomic Biology #1080 / 1206 West Gregory Drive, Urbana IL.

Appendix A — Building Maps

Legend:

Evacuation
Assembly

Evacuation Assembly Area — The location where all evacuees will convene once an order to evacuate is given.

EXIT

Exit — Designated route out of the building.



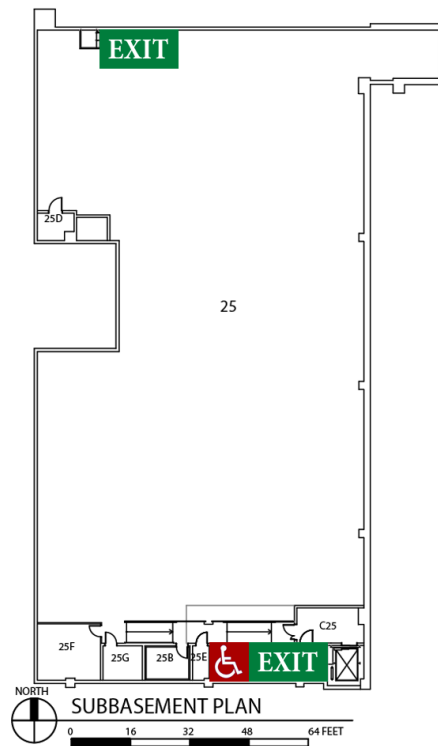
Area of Rescue Assistance — An area where people, including those with functional needs, can go to await assistance if they are not able to evacuate or get to another area of safety.



Storm Refuge Area — Specific locations within University buildings/facilities that provide reasonable protection from severe weather. Not all University buildings/facilities have Storm Refuge Areas.

Evacuation
Assembly

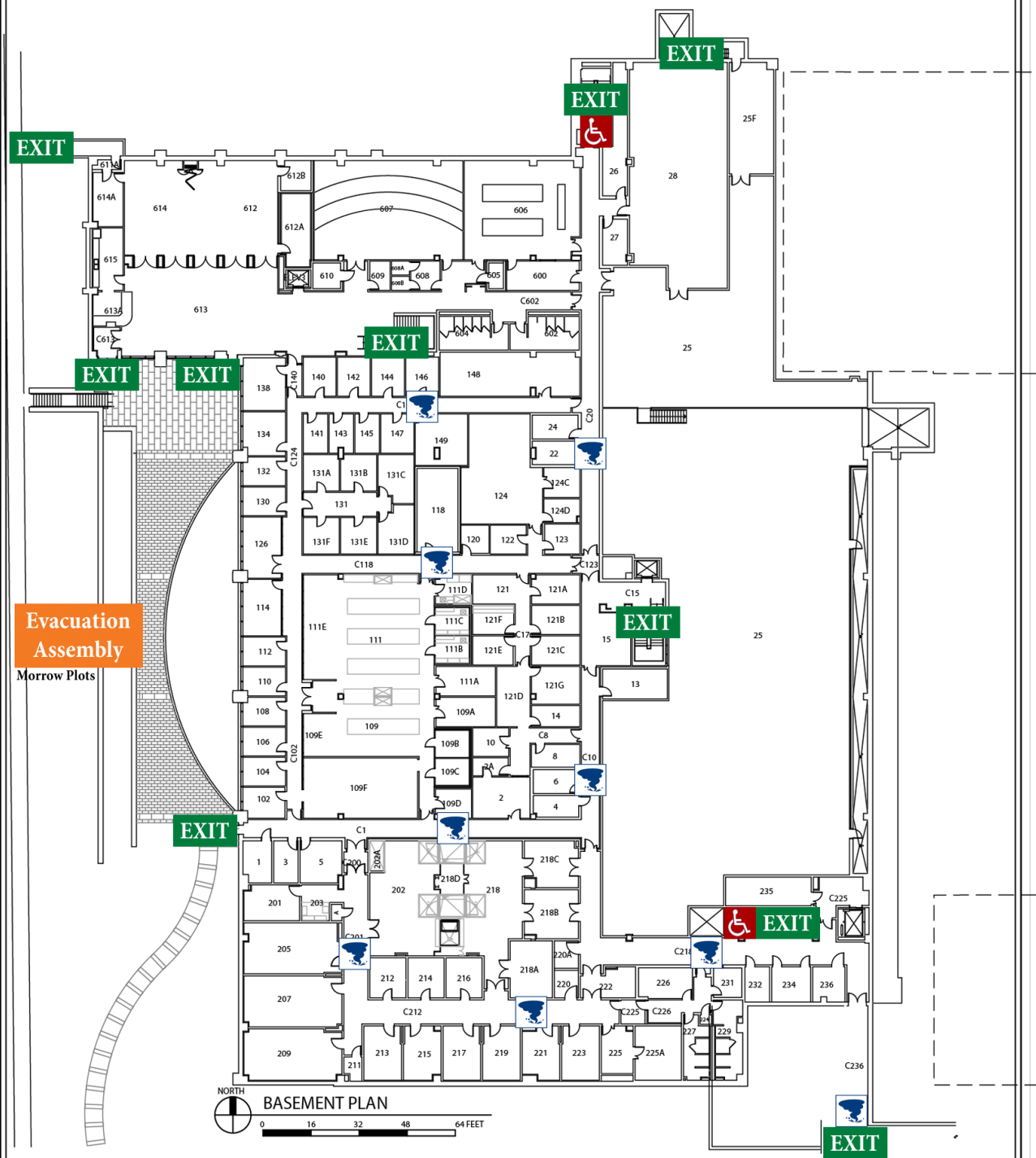
Morrow Plots



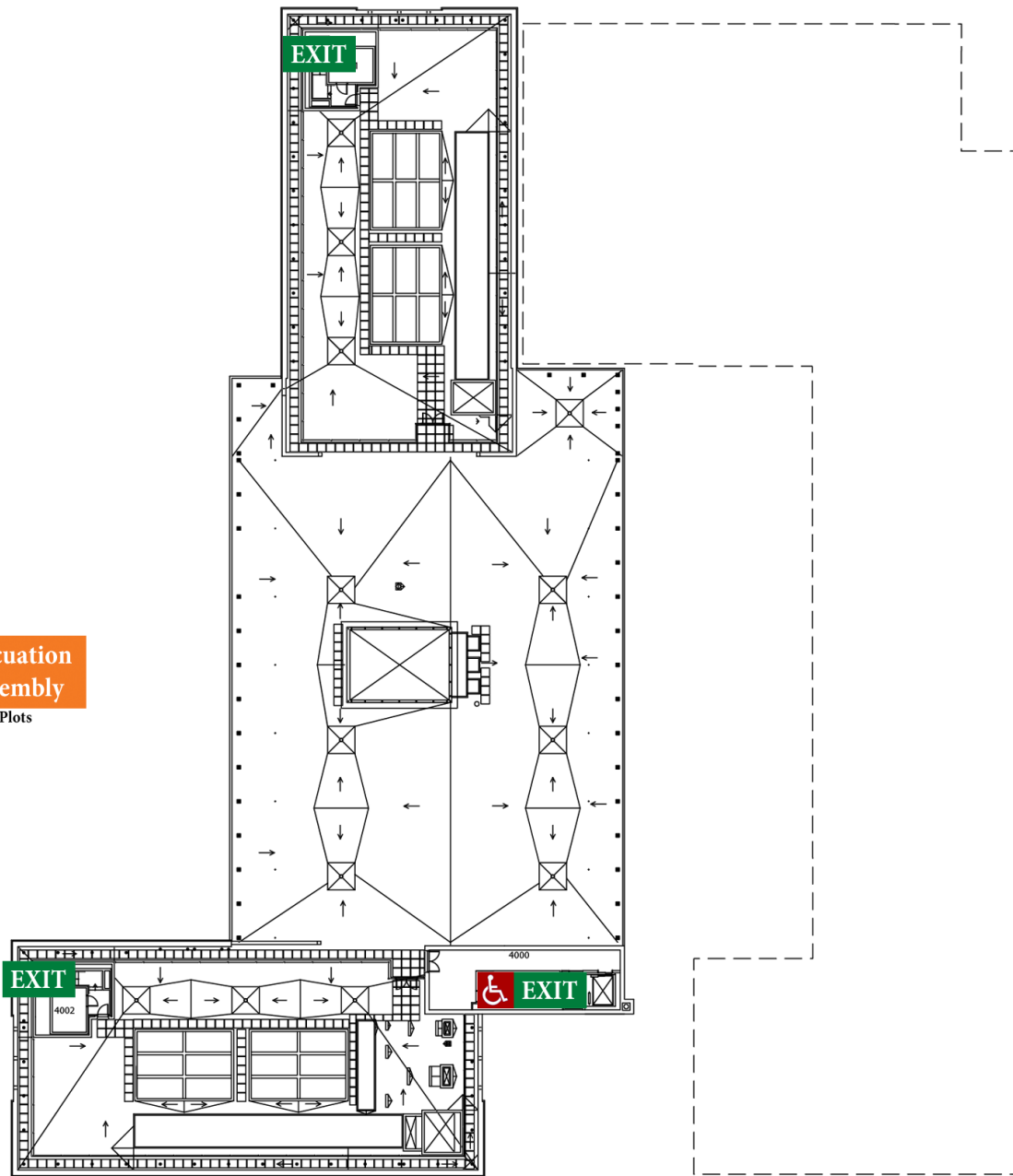
Area of Rescue Assistance





Storm Refuge Area



**Evacuation
Assembly**
Morrow Plots

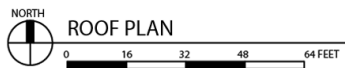
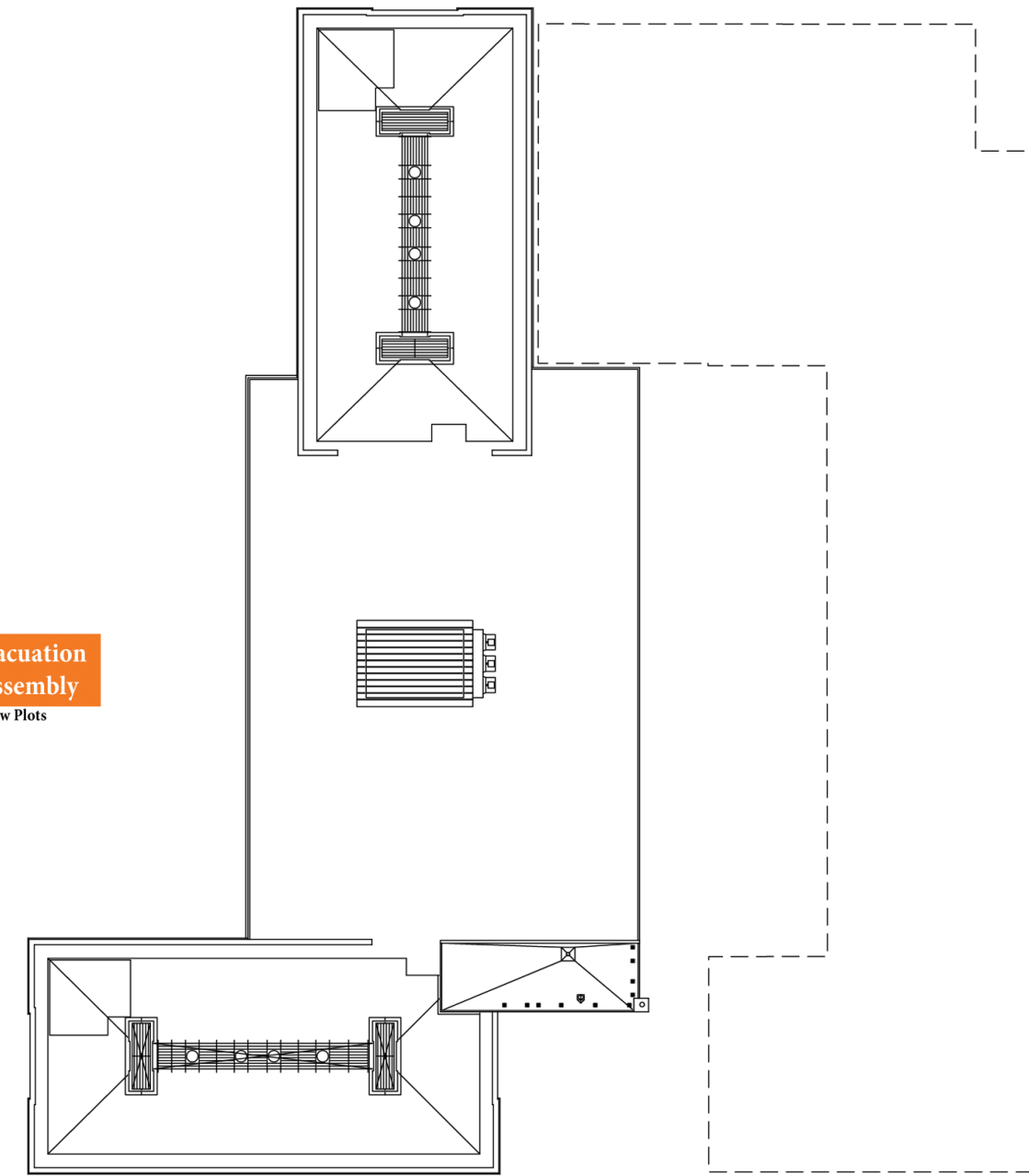


NORTH
FOURTH FLOOR PLAN
0 16 32 48 64 FEET

 Area of Rescue Assistance
 Storm Refuge Area

Evacuation
Assembly

Morrow Plots



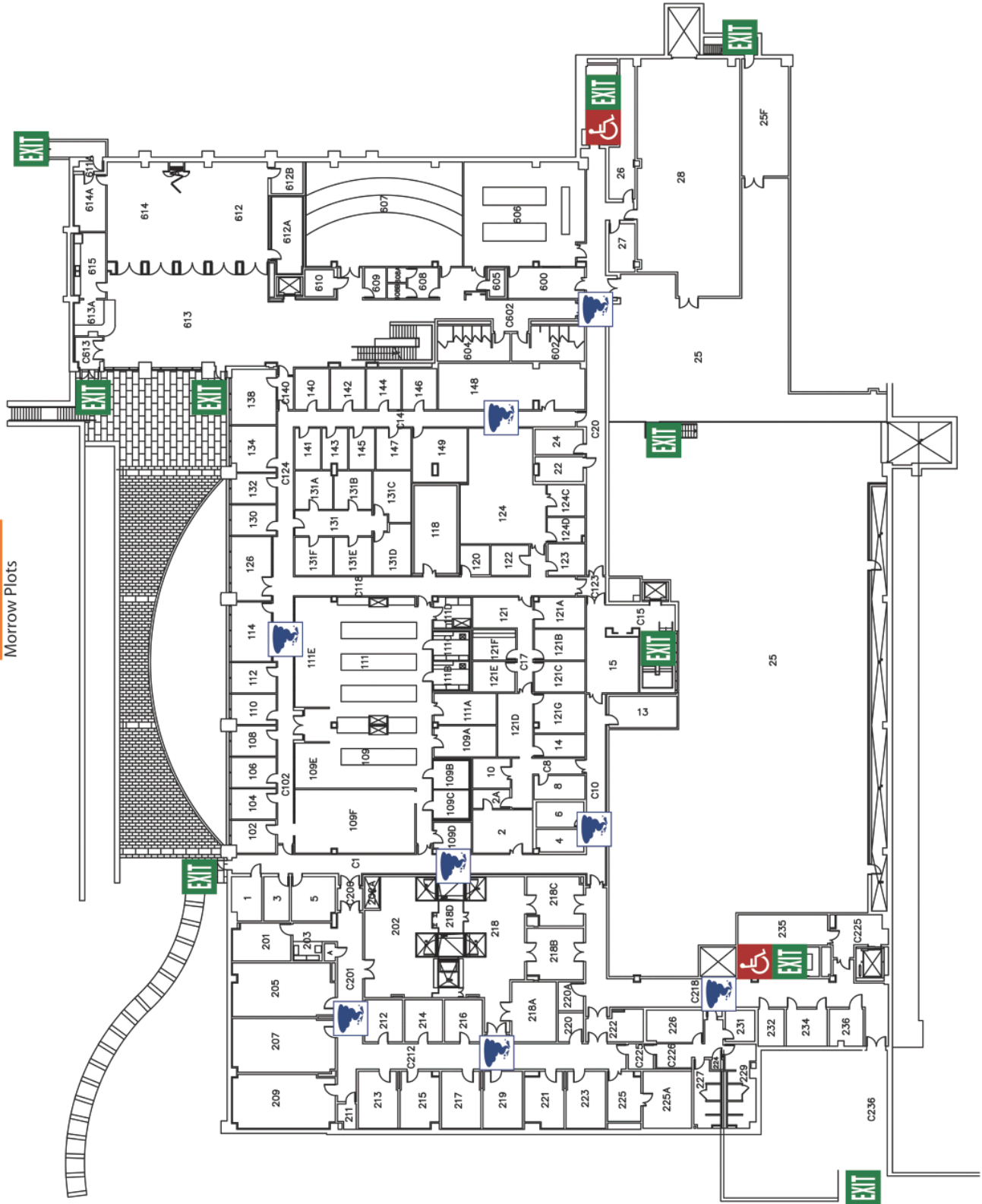
Area of Rescue Assistance



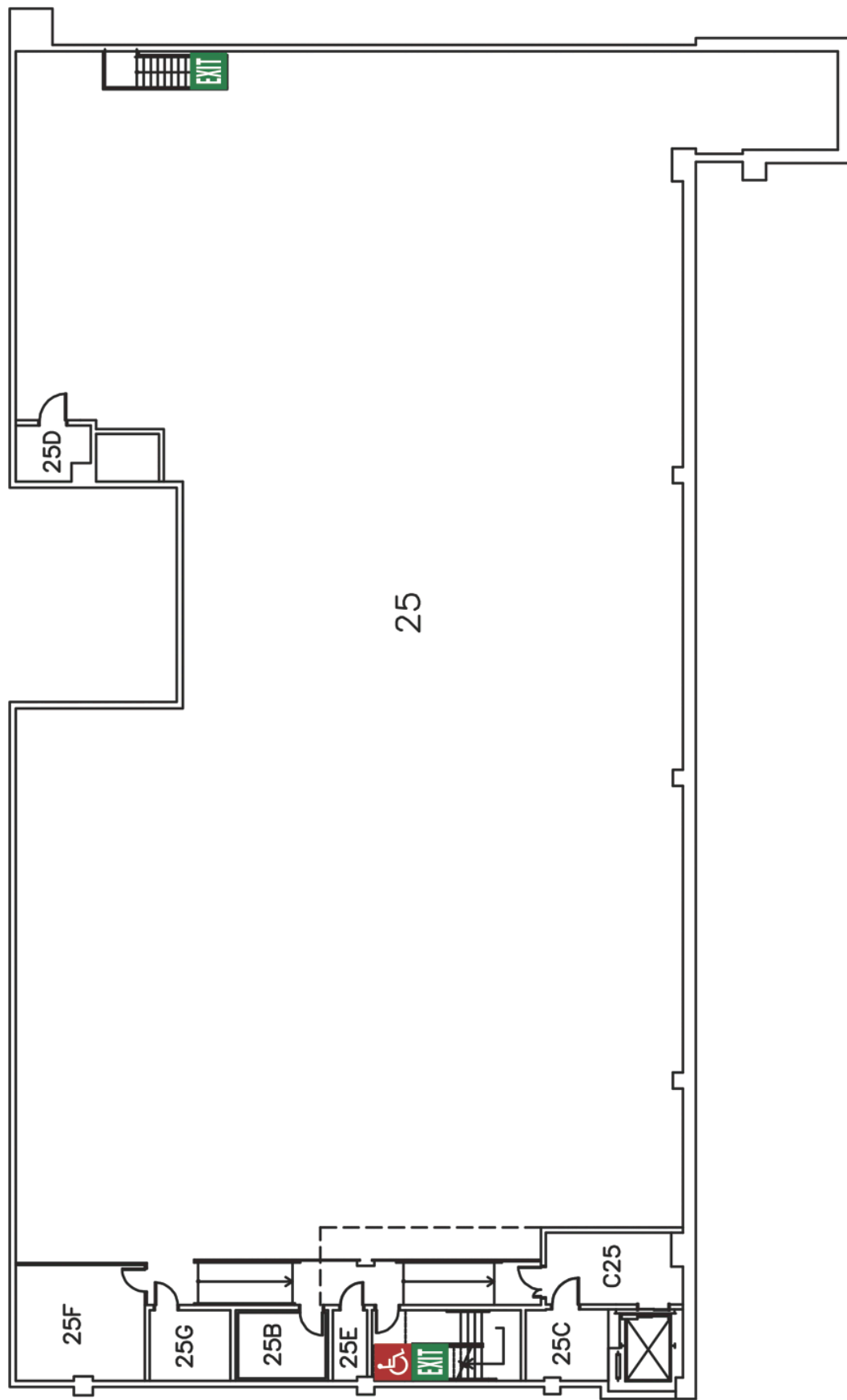
Storm Refuge Area

Evacuation Assembly

Morrow Plots



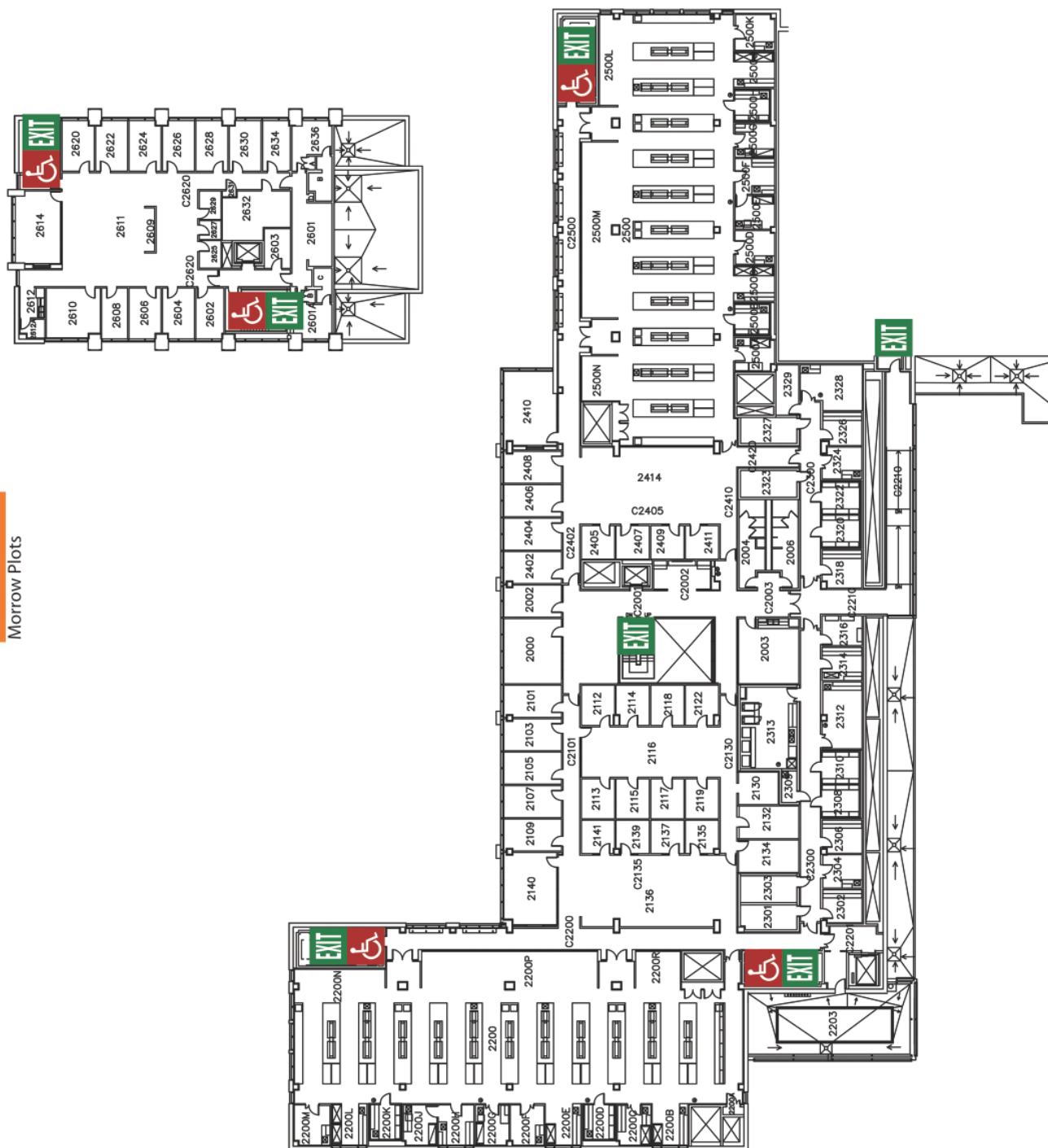
Institute for Genomic Biology — Basement



Morrow Plots

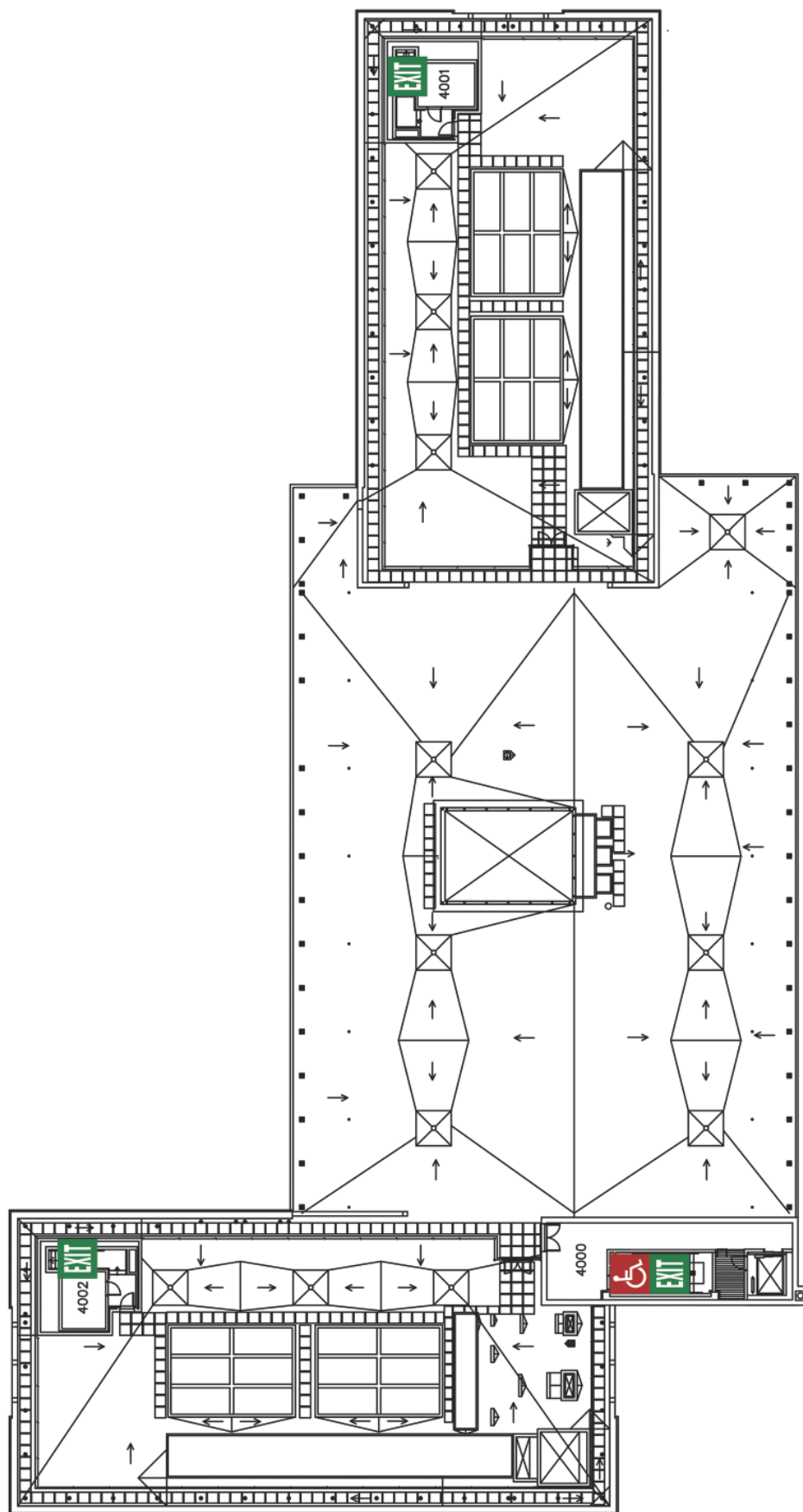


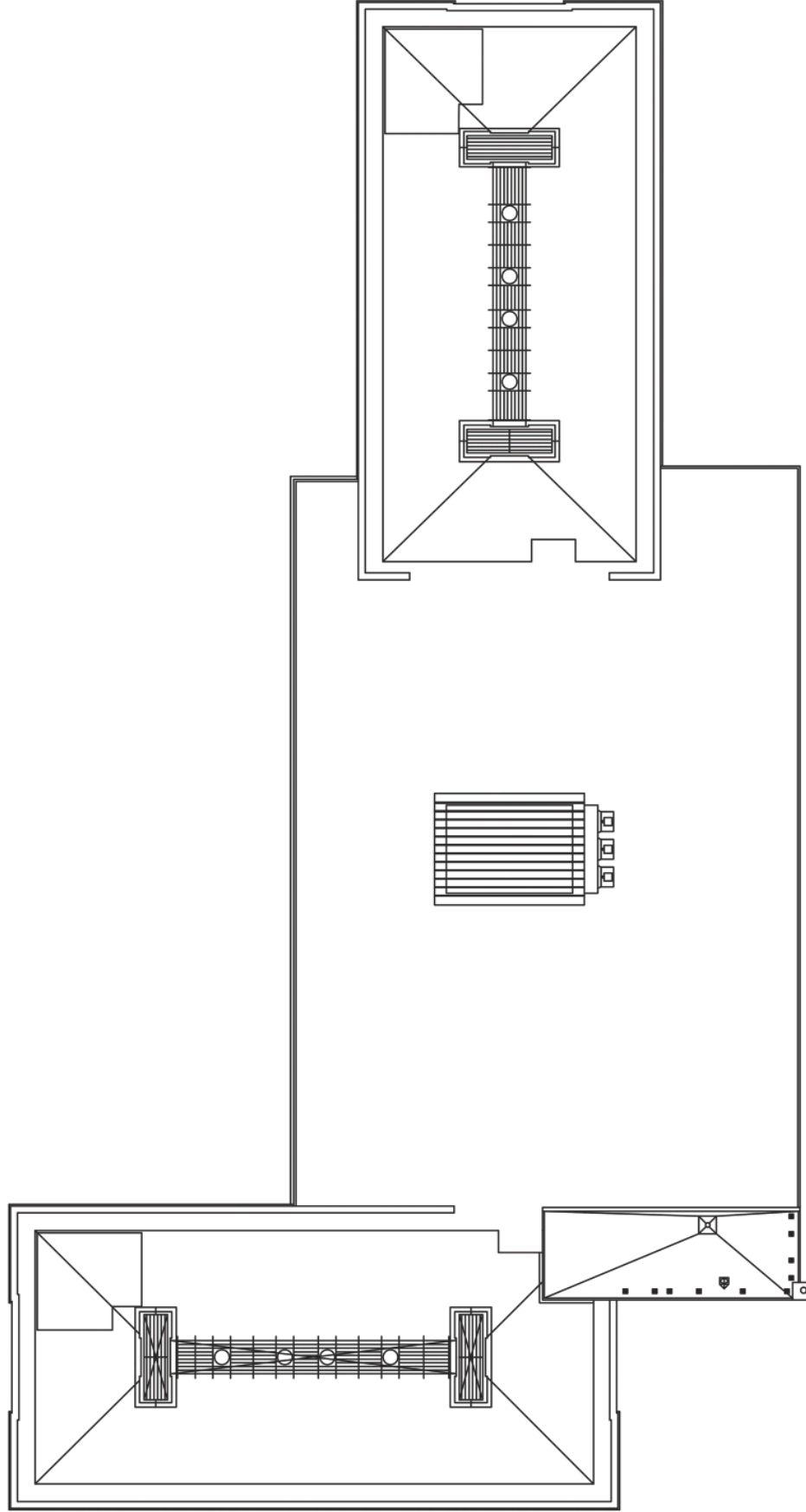
Morrow Plots



Morrow Plots







BUILDING EMERGENCY ACTION PLAN

Institute for Genomic Biology #1080 / 1206 West Gregory Drive, Urbana IL.

Appendix B — Employee Evacuation Accountability Form

Gatehouse, Array Café & Mechanical Rooms

Floor Coordinator: Robert Mann / Jesse Southern

Persons within Area of Responsibility	Evacuation Sign-Off
Alexander, Bobby	
Anderson, Gary	
Ashikyan, Christine	
Bach, Michael	
Band, Nevo	
Barnes, Bruce	
Billbrey, Rochelle	
Choi, Michael	
Coulter, Kathryn	
Davidson, Dan	
Edmonson, Darci	
Fang, Yuanjin	
Fouke, Bruce	
Gentry, Janessa	
Hendricks, April	
Horton, Gabriel	
Hug, Barbara	
Jauhola, Barbara	
Johnson, Kim	
Johnson, Megan	
Johnston, Dale	
Jongeneel, Susan	
King, Jacinda	
Lee, Mirhee	
Leistner, Malissa	
Lipking, Rhonda	
Maloney, John	
McKillip, Melissa	
Metcalf, Kathryne	
Mikel, Mark	
Phillips, Mary	
Quirk, Jennifer	
Rice, Jennifer	
Roberts, Amy	
Sadkhin, Boris	
Southern, Jesse	
Slater, David	
Stadler, Nina	

BUILDING EMERGENCY ACTION PLAN

Institute for Genomic Biology #1080 / 1206 West Gregory Drive, Urbana IL.

Story, Justine	
Sturgeon, Claire	
Sturgeon, Tommie	
Sweedler, Jonathan	
Vasi, Nicholas	
Willard, Jedidiah	
Williams, Sarah	

Core Facilities

Floor Coordinator: Austin Cyphersmith / Glen Fried

Persons within Area of Responsibility	Evacuation Sign-Off
Nardine Abadeer	
Zhanar Abil	
Malavika Adur	
Jordan Aerts	
Wylie Ahmed	
Muhammad Yakut Ali	
Raghu Ambekar Ramachandra	
Kendall Annetti	
Shadi Ansari Ansari	
Eleni Antoniadou	
Hossain Azam	
Kwanghyun Baek	
Piyush Bajaj	
Jessica Banks	
Anthony Barkan	
Jennifer Barnes	
Anastasia Beiriger	
Anna Bergamaschi	
Noah Bindman	
Fatih Bozkurt	
Michael Brothers	
Martin Burke	
Anthony Cam	
Jairi Carter	
Juan Castro	
Melissa Cavaretta	

BUILDING EMERGENCY ACTION PLAN

Institute for Genomic Biology #1080 / 1206 West Gregory Drive, Urbana IL.

Won-Byoung Chae	
Vincent Chan	
Lily Chau	
Isthier Chaudhury	
Davin Chernak	
Nicholas Clay	
David Coleman	
Matthew Conrad	
Lisa Noelle Cooper	
Amanda Costello	
Joseph Courtney	
Yingjin Cui	
Caroline Cvetkovic	
Ashley Davis	
Xiaojian Deng	
Vermont Dia	
Alicia Dietrich	
Jamie Doligale	
Sushmitha Durgam	
John Eichorst	
Jeremy Ellermeir	
Donna Epps	
Tawhid Ezaz	
Tim Flood	
Glenn Fried	
Becky Fuller	
Yongxiang Gao	
Thomas Garcia	
Yijie Geng	
Jennifer Girard	
Elissa Grzincic	
Xudong Guan	
Yonghua Hao	
Derek Haselhorst	
Carleigh Hebbard	
Lori Heil	
Christine Herman	
Shelly Hester	
Carly Hill	
Ashley Himes	
Jennifer Hoeflinger	
Hannah Holscher	
Ava Holz	
Grant Hsiao	

BUILDING EMERGENCY ACTION PLAN

Institute for Genomic Biology #1080 / 1206 West Gregory Drive, Urbana IL.

Kuei-Yang Hsiao	
Yunfeng Hu	
Cris Hughes	
XiaoJiao Huo	
Brian Imai	
Reeba Jacob	
Amin Jahromi	
Dao Janjoroen	
Fnu Jaspreet Kaur	
Tao Jiang	
Jesse Johnson	
Stefan Johnsrud	
Molly Kent	
Hyoung Seok Kim	
Raehyan Kim	
Rong Kong	
Zhizhou Kuang	
Gulsim Kulshorova	
Tung Yuen Lau	
Mary Laws	
Mihael Lazebnik	
Matthew Lee	
Felipe Lee Montiel	
Dong Li	
Qian Li	
Quanxi Li	
Jing Liang	
Fangqiong Ling	
Yanhong Liu	
Christine Lucas	
Yingshuang Lu	
Shuhong Luo	
Yunzi Luo	
Liang Ma	
Sergio Machado	
Zeynep Madak-Erdogan	
Ripan Malhi	
Thomas David Man	
Luke Mander	
Heather Mangian	
Janelle Mapes	
Michael Marty	
Farzaneh Masoud	
Larry Millet	

BUILDING EMERGENCY ACTION PLAN

Institute for Genomic Biology #1080 / 1206 West Gregory Drive, Urbana IL.

Ritika Mohan	
Anna Molineaux	
Morgan Moon	
Tyler Moran	
Ismaeel Muhamed	
Shanugasaundaram Nallasamy	
Anne Newell-Fugate	
Nick Niemiec	
Jonathan Ning	
Kieran Normoyle	
Man-Ho Oh	
Matthew Panasevich	
Sandeep Pawar	
Jessie Peh	
Spencer Peck	
Kimberly Perry	
Anusha Pokhriyal	
Lisa Powers	
Sirima Puangpraphant	
Abraham Qavi	
Emily Radalowski	
Guodong Rao	
Elizabeth Reznikov	
Obaid Sarvana	
Sarah Scholl	
Eric Sedivy	
Ellora Sen-Gupta	
Syed Tahir Abbas Shah	
Nitesh Shashikanth	
Pooja Singhmar	
Mayandi Sivaguru	
Samuel Skinner	
Timothy Smith	
Juliana Soares	
Ziyuan Song	
Carolina Soto	
Rita Strakovsky	
Ning Sun	
Hamid Tabdili	
Li Tang	
Xin Tang	
Avital Tidhar	
Shivangi Tiwari	
Ramreddy Tippana	

BUILDING EMERGENCY ACTION PLAN

Institute for Genomic Biology #1080 / 1206 West Gregory Drive, Urbana IL.

Richard Travers	
Chunlai Tu	
Aurora Turgeon	
Suzan Uzun	
Michael Walsh	
Dayong Wang	
Adam Washburn	
Eric Watt	
Robert Wensing	
Cassandra Wesseln	
Emma Wils-Plotz	
William Wilson	
Hlaing Win	
Weiwei Wu	
Jie An Yang	
Xujuan Yang	
Peter Yau	
Jonathan Yen	
Lichen Yen	
Qian Yin	
Mehdi Zaman	
Olga Zernova	
Douglas Zhang	
Rujing Zhang	
Yue Chao Zhao	
Qin Zhou	
Nan Zheng	
Yu Zhong	
Hao Zhu	
James Zhu	
Krystle Zuniga	

Cellular Decision Making - Concourse Lab

Floor Coordinator: Ben Leslie / Farhan Chowdhury

Persons within Area of Responsibility	Evacuation Sign-Off
Aggarwal, Vasudha	
Arslan, Sinan	
Bailey, Ryan C.	
Bansal, Nidhanjali	

BUILDING EMERGENCY ACTION PLAN

Institute for Genomic Biology #1080 / 1206 West Gregory Drive, Urbana IL.

Bissonnette, Paul	
Botham, Rachel	
Bruan, John	
Brenner, Michael	
Burhani, Man	
Chemla, Yann	
Chowdhury, Farhan	
Clegg, Robert	
DeLeon, Thomas	
Ding, Steve	
Do, Christine	
Doganay, Sultan	
Erickson, Hann	
Fan, Timothy	
Fei, Jingyi	
Farterman Martin, Teresa	
Freeman, Brian	
Garg, Ratish	
Guang, Shuomeng	
Ha, Taekjip	
Hafeman, Michael	
Hayward, Amanda	
Heil, Lori	
Hejna, Miroslav	
Heo, Paul	
Hergenrother, Paul	
Holzman, Ruth	
Hou, Jack	
Hua, Boyan	
Hwang, Helen	
Imgruet, Molly	
Kanketayeva, Zhansaya	
Kelleher, Nathan	
Kelleher, Neil	
Kelly, Jamie	
Kim, Dewey	
Kim, Grace	
Kim, Hajin	
Kim, Hyuneil	
Kim, Jian	
Kim, Younghoon	
Koh, Hye Ran	
Kranz, David	
Kreig, Alex	

BUILDING EMERGENCY ACTION PLAN

Institute for Genomic Biology #1080 / 1206 West Gregory Drive, Urbana IL.

Lahiri, Pratik	
Lambrecht, Michael	
Lanni, Eric	
Lee, Hyang Yeon	
Leslie, Benjamin	
Li, Yang	
Liu, Yi-Liang	
Liu, Yiyi	
Ma, Jian	
Ma, Ping	
McCleary, Meghan	
McClellan, Melinda	
Mitra, Jaba	
Mizzen, Craig	
Moon, Woo Young	
Morrison, Karen	
Myong, Su-A	
Nichols, Jennifer	
Nuzzo, Ralph	
Ouyang, Wewei	
Park, Jee Hae	
Park, Seongjin	
Parkinson, Elizabeth	
Partlow, Kathryn	
Peterson, Ashley	
Price, Nathan	
Qi, Xinyue	
Qiu, Yupeng	
Rahil, Zainag	
Roeinpeikar, Seyed Mohammad Mehdi	
Roth, Howard	
Roy, Edward	
Rube, Hans	
Scavuzzo, Claire	
Schroeder, Mallory	
Selvin, Paul	
Sherman, Anna	
Shi, Xinghua	
Sligar, Stephen	
Sloofman, Laura	
Song, Jun	
Sridhar, Bharat	
Supple, Matthew	
Supple, Stephen	

BUILDING EMERGENCY ACTION PLAN

Institute for Genomic Biology #1080 / 1206 West Gregory Drive, Urbana IL.

Thibodeaux, Christopher	
Tritschler, Felix	
Tucker, Kevin	
Wang, Mengyi	
Wang, Xuefeng	
Weida, Brittany	
Wu, Cong	
Xiao, Weikun	
Xu, Qian "Elizabeth"	
Yodh, Jaya	
Zhang, Jichuan	
Zhang, Yinan	

GEGC (Genomic Ecology of Global Change) - 1500 Lab

Floor Coordinator: Jing Dong / Kat Grennan

Persons within Area of Responsibility	Evacuation Sign-Off
Grace Abernathy	
Mark Abordo	
Elizabeth Ainsworth	
Mohammad Moein Azimi	
Darshi Banan	
Daniel Berger	
Carl Bernacchi	
Amy Betzelberger	
Damla Bilgin	
Metin Bilgin	
Kristen Bishop	
Christopher Black	
Ryan Boyd	
Payne Burks	
Gustavo Caetano-Anolles	
Wen Li Chen	
Steve Clough	
Alex Crisel	
Mark David	
Carl Davidson	
Evan DeLucia	
Nicholas DeLucia	
Rebekah Deter	
Greg Dick	

BUILDING EMERGENCY ACTION PLAN

Institute for Genomic Biology #1080 / 1206 West Gregory Drive, Urbana IL.

Michael Donovan	
David Drag	
Zhaozhong Feng	
Luke Freyfogle	
Linus Gog	
Sharon Gray	
Aleel Kat Greenan	
Kristina Gronkiewicz	
Pamela Hall	
Alexander Hargus	
Elizabeth Hawkins	
George Hickman	
Mir Zaman Hussain	
Michael Iakiviak	
Tahir Ibrahim	
Sara Kammlade	
Alexander Kent	
Angela Kent	
Jisoo Kim	
Stephanie Klein	
Robert Koester	
Faezeh Koohestani	
Rob Kooper	
Indrajit Kumar	
Melinda Laborg	
Allen Lawrance	
Andrew Leakey	
David Lebauer	
Courtney Leisner	
Anna Locke	
Joshua Mantooth	
Robert Markelz	
Chloe Mattia	
Wesley Maurer	
Kenton McHenry	
Jesse Miller	
Christopher Montes	
Josue Montes de oca Martinez	
Stephen Moose	
Paul Nabity	
Chris Ng	
Donald Ort	
Rachel Paul	
Ariane Peralta	

BUILDING EMERGENCY ACTION PLAN

Institute for Genomic Biology #1080 / 1206 West Gregory Drive, Urbana IL.

Abigail Peterson	
Stephanie Puma	
Kannan Puthuval	
Rodrigo Ramirez	
Lorena Rios Acosta	
David Rosenthal	
Jacob Rosenthal	
Karla Ruiz	
Ursula Ruiz Vera	
Lauren Segal	
Xiuli Shen	
Matthew Siebers	
Jeff Skoneczka	
Becky Slattery	
John Spiekerman	
Eiji Takahashi	
Andy Tu	
Mike Urban	
Andrew VanLoocke	
Rachel Vinsel	
Lauren Vosseller	
Nathan Walter	
Victor Wan	
Dan Wang	
Jenny Wells	
Timothy Wertin	
Patrick Wiener	
Kevin Wolz	
Scott Woolbright	
Anthony Yannarell	
Dong Ye	
Rachel Yelin	
Craig Yendrek	
Brian Zehr	
Zinguang Zhu	
Ray Zielinski	

EBI (Energy Biosciences Institute) - 1200 Lab

Floor Coordinator: _____ Kate Janssen / Jianping Wang _____

Persons within Area of Responsibility	Evacuation Sign-Off
---------------------------------------	---------------------

BUILDING EMERGENCY ACTION PLAN

Institute for Genomic Biology #1080 / 1206 West Gregory Drive, Urbana IL.

Hasan Abad	
Ahmed Abdel-Hamid	
James Abdo	
Aqsa Abrar	
Elizabeth Adams	
Shivani Adhikari	
Bright Agindotan	
Monday Ahonsi	
Syed Ahsen	
Joseph Akinola	
Denise Akuamoah	
Magdy Alabady	
Lucas Altenbaumer	
Dianna Anderson	
Maribel Arteaga	
Ithipong Assaranurak	
Derek Athy	
Matthew Au	
Christopher Austin	
Sohyun 'Brian' Bae	
Justin Bagley	
Chance Bainbridge	
Nicholas Baker	
Rebecca Bare	
Elizabeth Baird	
Nicholas Baker	
Adam Barling	
Callan Beeson	
Jayanand Boddu	
German Bollero	
Carl Bradley	
Nick Brady	
Colton Brandau	
Patrick Brown	
Alanna Burnett	
Robert Cachro	
Edhivia Campos-Velasquez	
Isaac Cann	
Carol Celestine	
Gyu Hoi Cha	
Won Byoung Chae	
Usawadee Chaiprom	
Anwasha Chakrabarti	
Ran Chao	

BUILDING EMERGENCY ACTION PLAN

Institute for Genomic Biology #1080 / 1206 West Gregory Drive, Urbana IL.

Yulia Chembulatova	
Hsiao-Han Chen	
Ting Chen	
Catheryne Chiang	
Lindsay Clark	
Emzi Clemons	
Travis Cleveland	
Meghan Collins	
Kasey Colombani	
Dan Coursolle	
John Cronan	
Jack Cygan	
George Czapar	
Mary-Grace Danao	
Chanell Davis	
Morgan Davis	
Sarah Davis	
Jose DeFrias	
Michael Dietze	
Kevin Dinh	
Dylan Dodd	
Patrick Doherty	
Jing Dong	
Zachary Dookeran	
Jing Du	
Katarzyna Dubiel	
Benjamin Duval	
Puneet Dwivedi	
Eric Dyer	
Steven Eckhoff	
Wayland Eheart	
Lisa Emerson	
Jody Endres	
Dawn Eriksen	
Maritza Estrada	
Xiaohui Feng	
Xueyang Feng	
Fabian Fernandez	
Michael Ferrari	
Christina Ferraro	
Alicia Gardner	
Eden Gebregiorgis	
Katarzyna Glowacka	
Nuzia Gomez-Casanovas	

BUILDING EMERGENCY ACTION PLAN

Institute for Genomic Biology #1080 / 1206 West Gregory Drive, Urbana IL.

Angshumala Goswami	
Michael Gray	
Tony Grift	
Bin Guo	
Sukjin Ha	
David Haffey	
Alan Hansen	
Terry Harrison	
Anna Hausmann	
Becky Heid	
Katherine Heineman	
Race Higgins	
Ryan Hoffman	
Lauren Hostert	
Shaobo Hou	
David Howlett	
Mike Hradek	
Haixiao Huang	
Tzu Yun Huang	
Tara Hudiburg	
Matthew Hudson	
Travis Hurt	
Imee Ignacio	
Atul Jain	
Deepak Jaiswal	
Brandon James	
Jin Ho Ji	
Liang Jiazhang	
Yong Su Jin	
Joshua Jochem	
Jack Juvik	
Christopher Kaiser	
Michael Kampwerth	
Gurshagan Kandhola	
Wei Kang	
Alexander Kent	
Madhu Khanna	
Heejin Kim	
Hyo Jin Kim	
Jeesoo "Annie" Kim	
Saehun Kim	
Soo Rin Kim	
Stephanie Kim	
Sumin Kim	

BUILDING EMERGENCY ACTION PLAN

Institute for Genomic Biology #1080 / 1206 West Gregory Drive, Urbana IL.

Jessica Kirkpatrick	
Rachel Knepp	
Svetlana Kocherginskaya	
Clarissa Koga	
Khushnuma Koita	
Jenny Kokini	
In-lok Kon	
Rhea Kressman	
Nurzhana Kuanysh	
Uros Kuzmanovic	
Nathamia Kwee	
Stephan Lane	
Angus Lanker	
Matthew Larson	
David LeBauer	
Dokyoung Lee	
Su Jung Lee	
Won Heong Lee	
Jeffery Lei	
Anastashia Lesmana	
Benjamin Lewis	
Derek Lewis	
Kyle Lewis	
Sijin Li	
Xiangzhen Li	
Yung-Chen Liao	
Tao Lin	
Ian Yi-En Liu	
Siyao Liu	
Nicole Long	
Stephen Long	
Rachel Luttrell	
Patrick Lynn	
Justin Ma	
Kelly Madorsky	
Sudipta Majumdar	
Juan Marroquin	
Mike Masters	
Randall Matarelli	
Jessica Mattick	
James McCubbins	
William McFall	
Jennifer McGinnis	
Justin McGrath	

BUILDING EMERGENCY ACTION PLAN

Institute for Genomic Biology #1080 / 1206 West Gregory Drive, Urbana IL.

Ruiqing Miao	
Zewei Miao	
Timothy Mies	
Adam Miller	
Gyver Million	
Ray Ming	
Corey Mitchell	
Patrick Mitsdarfer	
Juliette Morris	
Gautam Naishadham	
Hong Nan	
Ornella Ngamboma	
Thomas Norman	
Eun Joong Oh	
Min-Kyu Oh	
Ngozi Okanu	
Melvyn Okeke	
Adebosola Oladeinde	
Anthony Oliver	
Rayane Oliveria de Aguiar	
Iryna Olyva	
Hayri Onal	
Abhishek Pal	
Godshen Pallipparambil-Robert	
Rubing Pan	
Allen Parrish	
Panchalee Panchalee	
Robert Paul	
Noel Piatek	
Charles Pignon	
Ying Qin	
Josh Quarterman	
Lauren Quinn	
Lauren Radlinski	
Afroze Rahman	
Christopher Rao	
Thomas Rauchfuss	
Shivani Reddy	
Collin Reeser	
Ursula Reuter-Carlson	
Vanessa Revindran	
Ronald Revord	
Luis Rodriguez	
Rafael Rodriguez	

BUILDING EMERGENCY ACTION PLAN

Institute for Genomic Biology #1080 / 1206 West Gregory Drive, Urbana IL.

Nadine Rong	
Sharon Rynders	
Erik Sacks	
Pieter Salim Lim	
Fnu Sapna	
George Schmitz	
Charles Schroeder	
Elise Scott	
Seung Oh Seo	
Siddharthan Sethupathi	
Rushabh Shah	
DaeYun Shin	
Jessica Sieber	
Anthony Scott Simmons	
Prashanth Singanallur	
Clifford Singer	
Anna Skorupski	
Timothy Slating	
Christopher Sligar	
Candice Smith	
Logan Smith	
Eoghan Smyth	
Jose Solbiati	
Yang Song	
Idan Spitz	
David Steffen	
J. Ryan Stewart	
Hannah Stites	
Jeremy Stoller	
Kaitlin Straker	
Vijay Subramaniam	
Ronda Sullivan	
Kwak Suryang	
Ken Suslick	
Kankshita Swaminathan	
Megan Swanson	
Daniel Szewczyk	
Huseyin Tas	
Neil Thomas	
Taksawan Thongaram	
Carrie Thurber	
Lei Tian	
Kuan Chong Ting	
Yo Toma	

BUILDING EMERGENCY ACTION PLAN

Institute for Genomic Biology #1080 / 1206 West Gregory Drive, Urbana IL.

Timothy Turner	
Tom Voigt	
Zachary Vroom	
Jianping Wang	
Meng Wang	
Weiwei Wang	
Daniel Weber	
Na Wei	
Qiaosi Wei	
Connie Wilder	
Lecretia Williams	
Krishna Woli	
Taylor Wright	
Kang Wu	
Andrew Wycislo	
Liang Xie	
Alan Yanahan	
Xi Yang	
Xiaomin Yang	
Fanglin Ye	
Libin Ye	
Zhuolin Yi	
Patrick Yoo	
Yongbo Yuan	
Guochang Zhang	
Jing Zhang	
Xiaobin Zheng	
Jiewen Zhou	

GBB (Genomics of Neural & Behavioral Plasticity) - 2500 Lab

Floor Coordinator: Amy Ahmed-Cash / Huimin Zhang

Persons within Area of Responsibility	Evacuation Sign-Off
Amy Ahmed	
Emily Baltz	
Alison Bell	
May Berenbaum	
Richard Berlin	
Samuel Beshers	
Christopher Bolt	
Axel Brockmann	

BUILDING EMERGENCY ACTION PLAN

Institute for Genomic Biology #1080 / 1206 West Gregory Drive, Urbana IL.

Richard Burkhardt	
Derek Caetano-Anoles	
Sydney Cameron	
Kyle Carey	
Morgan Carr-Markell	
Stephanie Ceman	
Jonathon Cerqua	
Qian Cheng	
Hyun Duk Cho	
Tish Cundiff	
Jason Ebaugh	
Christopher Fields	
Brielle Fischman	
Chen Fu	
Becky Fuller	
Julia George	
Martha Gillette	
Rhanor Gillette	
Paul Gold	
William Greenough	
Clay Gregory	
Joshua Gulley	
Edwin Hadley	
Adam Hamilton	
Jeffrey Hinchman	
Robin Holland	
Matthew Hudson	
Yunliang Jiang	
Anna Jones	
Victor Jongeneel	
Morae Kang	
Miriam Kantorovitz	
Karen Kapheim	
Radhika Khetani	
Nadezda Kholina	
Donna Korol	
Andrew Lambert	
James Lee	
Seeon Lee	
Hongmei Li	
Yanen Li	
Yun Li	
Zhengzheng Liang	
Ling-Hsiu Liao	

BUILDING EMERGENCY ACTION PLAN

Institute for Genomic Biology #1080 / 1206 West Gregory Drive, Urbana IL.

Connor Liu	
Xiaochen Lu	
Yue Lu	
Claudia Lutz	
Jian Ma	
Ping Ma	
Jonathan Massey	
Abigail McEwen	
Tara McGill	
Matthew McNeill	
Mike Miles	
Jesse Miller	
Craig Mizzen	
Emma Murdoch	
Nicholas Naeger	
Thomas Newman	
Daniel Nye	
Yoshitsugo Oono	
Lillian Perez	
Danielle Ponsi	
Qihao Qu	
Kirstin Replogle	
Justin Rhodes	
Clare Rittschof	
Brent Roberts	
Hugh Robertson	
Julia Robinson	
Alfred Roca	
Sandra Rodriguez-Zas	
Bruce Schatz	
Safeer Shah	
Sarabh Sinha	
Laura Sligar	
Lisa Stubbs	
Andrew Suarez	
Calvin Sun	
Younguk Sun	
Kim Walden	
Fei Wang	
Patricia Anne Weisner	
Marsha Wheeler	
Charles Whitfield	
Ken Yokoyama	
Johnny Yu	

BUILDING EMERGENCY ACTION PLAN

Institute for Genomic Biology #1080 / 1206 West Gregory Drive, Urbana IL.

Jenny Zadeh	
ChengXiang Zhai	
Huimin Zhang	
Sheng Zhong	
Wenxuan Zhong	

ReBTE (Regenerative Biology & Tissue Engineering) - 2200 Lab

Floor Coordinator: _____ Jess Beaudoin / Derek Milner _____

Persons within Area of Responsibility	Evacuation Sign-Off
Ricki Alford	
Amir Hossein Alizadeh Ghamsari	
Eleni Antoniadou	
Kwanghyun Baek	
Adrienne Barry	
Omari Bassett	
Jessica Beaudoin	
Eftalda Becka	
Chris Beitel	
Ann Benefiel-Kunkel	
Denisa Bica	
Fernando Biase	
Richard Braatz	
Matthew Byrne	
Jean Scotty Cadet	
Steven Caliri	
Joann Cameron	
Xiaoyi Cao	
Franck Carbonero	
Li-Hsin Chang	
Chieh-Chun Chen	
Ji Sun Choi	
Sangwook Choi	
Ju Lan Chun	
Jonatas Cruz	
Roxanne De Leon	
Ross Devolder	
Stephen Diliberto	
Addison Dynek	
Hannah Friedman	
Nathan Gabrielson	

BUILDING EMERGENCY ACTION PLAN

Institute for Genomic Biology #1080 / 1206 West Gregory Drive, Urbana IL.

Nandini Goswami	
Sudipto Guha	
Jacob Hanselman	
Brendan Harley	
Katherine Hasan	
Jerrod Henderson	
Rebecca Hortensius	
Wenping Hu	
Iwona Jawiuk	
Tor Jensen	
Jae Hyun Jeong	
Joseph Katsiroubas	
Paul Kenis	
Darza Khvostichenko	
Andrew Kim	
Kyekyoon Kim	
Luke Knapp	
Vladmir Kolossov	
Hyun Joon Kong	
Seyfullah Enes Kotil	
Jessica Kramer	
Kristy Kuzmuk	
Mei-Hsiu Lai	
Jaebum Lee	
Min Kyung Lee	
Matthew Leslie	
John Lindo	
Chang Liu	
Benjamin Lucas	
Bhushan Mahadik	
Aaron Maki	
Nicholas Marshall	
Molly Melhem	
Derek Milner	
Ritika Mohan	
Elisa Monaco	
Laura Mozdzen	
Arnab Mukherjee	
Cong-Tri Nguyen	
Daniel Pack	
Niket Patel	
Ashtamurthy Pawate	
Sara Pedron Haba	
Jacquelyn Pence	

BUILDING EMERGENCY ACTION PLAN

Institute for Genomic Biology #1080 / 1206 West Gregory Drive, Urbana IL.

Taylor Perez	
Michael Poellmenn	
Samantha Polak	
Nagendra Prabhu Ponnuraj	
Rathnaweera Rabel	
Patrick Redwood	
Max Rich	
Jennifer Ringwelski	
Marcelo Rivas-Astroza	
Fernanda Rodrigues	
Laurie Rund	
Chotitath Sanpitakseree	
Kyle Schachtschneider	
Kathy Schaefer	
Karen Sears	
Selami Sevtin	
Bridget Sheehan	
Anna Sherman	
Artem Shkumatov	
Megan Silas	
Luke Skertich	
Cartney Smith	
Allison Stewart	
Matthew Stewart	
Deborah Swanson	
Michael Thorson	
Joshua Tice	
Gregory Timp	
Daniel Urban	
Johana Carolina Vega-Whitehill	
Amy Wagoner-Johnson	
Bo Wang	
Michael Welge	
Jason Wever	
Matthew Wheeler	
Shu Xiao	
Pengfei Yu	
Yang Zhang	
Sheng Zhong	
Zhilong Shu	
Samuel Zschack	

BUILDING EMERGENCY ACTION PLAN

Institute for Genomic Biology #1080 / 1206 West Gregory Drive, Urbana IL.

BioBEL (Business Economics & Law of Genomic Biology) - 2200 Lab

Persons within Area of Responsibility	Evacuation Sign-Off
Rajshree Agarwal	
Gwendolyn Ball	
Janet Bercovitz	
JiYoon Chung	
Sandra Corredor	
Gary Durack	
Raj Echambadi	
Bryan Endres	
Peter Goldsmith	
Glenn Hoetker	
Miranda Huey	
Jay Kesan	
Madhu Khanna	
John Li	
Chih Liu	
Paul Magelli	
John Mawdsley	
Marleen McCormick	
Douglas Miller	
John Mills	
Regan Radtke	
Ben Reed	
Jeff Savage	
Lawrence Schook	
Bradley Skousen	
Deepak Somaya	
Steven Sonka	
Liz Stull	
Chi-Ting Su	
Madhu Viswanathan	
Cheng Wang	
Hsiao-Shan Yang	
Wen Zheng	

BUILDING EMERGENCY ACTION PLAN

Institute for Genomic Biology #1080 / 1206 West Gregory Drive, Urbana IL.

BCXT / HMS (Host Microbe Systems) - 3500 Lab

Floor Coordinator: Mindy Baughman / Amy Weckle

Persons within Area of Responsibility	Evacuation Sign-Off
Katherine Amato	
Yuka Bannai	
David Bettinardi	
Steven Blanke	
Monica Carr	
Nathan Clemons	
Melissa Cregger	
Jennifer Croix	
Sheila Egan	
H. Rex Gaskins	
Janessa Gentry	
Andres Gomez	
Eugene Greenberg	
Bryan Hart	
Mengfei Ho	
Robin Holland	
Lois Hoyer	
Steven Leigh	
Min Li	
Jacqueline Miller	
Margret Miller	
Gary Olsen	
Paige Poisson	
Claudia Reich	
Tana Repella	
Angel Rivera	
Jay Rohde	
James Slauch	
Rebecca Stumpf	
Ken Takatori	
Richard Tapping	
Susan Thomas	
Hiroki Wada	
Mei Wang	
Michelle Wegscheid	
Bryan White	
Brenda Anne Wilson	
Fang Yang	

BUILDING EMERGENCY ACTION PLAN

Institute for Genomic Biology #1080 / 1206 West Gregory Drive, Urbana IL.

Persons within Area of Responsibility	Evacuation Sign-Off
Ahmed, Hajira	
Alcalde, Reinaldo	
Allen, Jacob	
Anderson, Rika	
Ardisana, Ryanne	
Bautista, Maria	
Benedict, Matthew	
Biancalani, Tommaso	
Blanke, Steven	
Bodalia, Krunal	
Braundmeier-Fleming, Andrea	
Branscomb, Elbert	
Bruce, William	
Burkhardt, Richard	
Chia, Nicholas	
Cregger, Melissa	
Dahmen, Karin	
DeMott, Laura	
Deveryshetty, Jaigeeth	
DeVille, Robert (Lee)	
Deviprasad Rao, Vikyath	
Dewerff, Samantha	
Dong, Yiran	
Eickhoff, Brooke	
Foster, Melissa	
George, Samantha	
Goettge, Michelle	
Goldenfeld, Nigel	
Gomez, Andres	
Gonnerman, Matthew	
Hoyer, Lois	
Janssen, Holger	
Johnson, Haley	
Kapuganti, Venkata	
Kelly, Susan	
Kim, Jiwon	
King, Alisa	
Krause, David	
Lenz, Katherine	
Liu, Wen-Tso	
Loth, Rachel	
Lu, Ting	

BUILDING EMERGENCY ACTION PLAN

Institute for Genomic Biology #1080 / 1206 West Gregory Drive, Urbana IL.

Luthey-Schulten, Zaida	
Mackie, Roderick	
Marr, Elizabeth	
Martini, K. Michael	
Mehan, Kelly	
Merkel, Annette	
Miller, Maggie	
Mittenthal, Jay	
Murphy, Erin	
Nobu, Masaru	
O'Dwyer, James	
Olsen, Gary	
Pour, Farshid Jafar	
Reich, Claudia	
Richard, Matthews	
Rivera, Angel	
Rowland, Elizabeth	
Sandoval, Nicholas	
Sanford, Robert	
Shih, Hong-Yan	
Shirashi, Miyako	
Singh, Rajveer	
Slauch, James	
Soufan, Noor	
Stumpf, Rebecca	
Tapping, Richard	
Umana, Juan	
Vegas, Carlos	
Wan, Lucy	
Wave, Anne	
Weber, Joseph	
Werth, Charles	
Whalen, Katie	

MMG (Mining Microbial Genomes for Novel Antibiotics) - 3200 Lab

Floor Coordinator: Ann Hyoungh-Sook / Caitlin Deane

Persons within Area of Responsibility	Evacuation Sign-Off
Jordan Baczynski	
Ahmet Badur	
Bryan Balthazor	

BUILDING EMERGENCY ACTION PLAN

Institute for Genomic Biology #1080 / 1206 West Gregory Drive, Urbana IL.

Patricia Blair	
Despoina Bougiokou	
Jason Bouvier	
Mary Brown	
Brandon Burkhart	
Xinyun Cao	
Amanda Chang	
Anthony Chau	
Jonathan Chekan	
Bob Chen	
Kyuil Cho	
Alexander Cioffi	
Joel Cioni	
Ryan Cobb	
Courtney Cox	
Brian Cunningham	
Caitlin Deane	
Bijoy Desai	
James Doroghazi	
James Drake	
Kyle Dunbar	
Kori Dunn	
Bradley Evans	
Courtney Evans	
Winston Feng	
Todd Freestone	
Aaron Frimel	
John Fudala	
Jiangtao Gao	
Neha Garg	
John Gerlt	
Tim Gernat	
Sarah Getter	
Salehe Ghasempur	
Robert Haines	
Nicholas Hess	
Colin Hoffman	
John Hung	
Heidi Imker	
Amy Jones	
Kou-San Ju	
Asha Kirchhoff	
Ritesh Kumar	
Uros Kuzmanovic	

BUILDING EMERGENCY ACTION PLAN

Institute for Genomic Biology #1080 / 1206 West Gregory Drive, Urbana IL.

Jae-Heon Lee	
Steven Li	
Xiangpo Li	
Zhi Li	
Zhongyi Li	
Tiit Lukk	
Sergio Madera	
Aditya Malik	
Agnieszha Maniak	
Tucker Maxson	
Joel Melby	
Darius Melton	
William Metcalf	
Fiona Mills-Groninger	
Douglas Mitchell	
Ancy Mohan	
Katie Molohon	
Evelyn Molloy	
Alyson Moseberry	
Katherine Murphy	
Satish Nair	
Spencer Peck	
Jaimie Pepping	
Mary Peterson	
Debbie Piper	
Isiah Ramos	
Julian Reed	
Pedro Ribeiro	
Ayano Sakai	
Cara Schornak	
Christopher Schwalen	
Rutvik Shah	
Zengyi Shao	
Abhishek Sharma	
Caleb Shearrow	
Yanxiang Shi	
Karol Sokolowski	
Rebecca Splain	
Joleen Su	
Aziz Susarrey	
Abdullah Syed	
Divya tankasala	
Kellie Taylor	
Jonathan Tietz	

BUILDING EMERGENCY ACTION PLAN

Institute for Genomic Biology #1080 / 1206 West Gregory Drive, Urbana IL.

Nhat Trinh	
Willem Van der donk	
Jean Alyxa Vendiola	
Benjamin Warlick	
Daniel Wichelecki	
Jeanna Wong	
Bryant Wood	
Haiqing Xu	
Ning Yang	
Xiaomin Yu	
Jun Kai Zhang	
Xinshuai Zhang	
Huimin Zhao	

BUILDING EMERGENCY ACTION PLAN

Institute for Genomic Biology #1080 / 1206 West Gregory Drive, Urbana IL.

Appendix C — Building Shutdown

OSHA Standard 1910.38(c)(3)

Procedures to be followed by employees who remain to operate critical plant operations before they evacuate;

Employees who may remain to shut down critical operations before evacuating

Certain equipment and processes must be shut down in stages or over time. In other instances it is not possible or practical for equipment or certain process to be shut down under certain emergency situations. This condition, which is not unusual for certain large manufacturers operating complex processes, is not typical of small enterprises that normally can turn off equipment or utilities if necessary and evacuate. However some small enterprises may require designated employees remain behind briefly to operate fire extinguishers or shut down gas and/or electrical systems and other special equipment that could be damaged if left operating or create additional hazards to emergency responders (such as releasing hazardous materials).

Each employer must review their operation and determine whether total and immediate evacuation is possible for various types of emergencies. The preferred approach, and the one most often taken by small enterprises, is immediate evacuation of all their employees when the evacuation alarm is sounded.

If any employees will stay behind, the plan must describe in detail the procedures to be followed by these employees. All employees remaining behind must be capable of recognizing when to abandon the operation or task and evacuate themselves before their egress path is blocked. In small establishments it is common to include in your plan locations where utilities (such as electrical and gas) can be shut down for all or part of the facility either by your own employees or by emergency response personnel.

Staff Required for Shutdown during Evacuation

Name	Office Phone	Cell	Critical Actions Required
n/a			
Immediate evacuation recommended			

**Laboratory Animal Program
University of Illinois
at Urbana-Champaign
Emergency Response Plan**

University of Illinois Laboratory Animal Program
Division of Animal Resources
Emergency Response Plan

I. Introduction and Scope

A. Mission and Priorities

The purpose of this plan is to protect personnel, research animals, facilities, equipment, and those research projects dependent on laboratory animals to the greatest extent possible in the event of an emergency. The principal goal is to protect the health and safety of personnel. Research and teaching animals will be saved or protected from suffering when this does not unduly risk personnel health and safety. Protection of facilities and equipment will be considered when such actions do not jeopardize human or laboratory animal health.

B. Emergencies Defined

Emergencies covered by this plan include all of the following but are not limited to:

- Utility outages in animal holding areas with the potential to cause injury to personnel or injury, illness, or significant distress in research or teaching animals
- Floods causing facility damage, directly exposing animals to contaminated water, or blocking access to and from animal areas
- Fires
- Explosions
- Earthquakes
- Tornadoes
- Break-ins, animal facility vandalism, and/or criminal actions affecting facilities, animals or personnel
- Active Threat
- Other events that endanger animal lives, disrupt care of animals for more than 12 hours, or have the potential to do either.

C. Personnel

In the case of an emergency as described in Section I. B., all or some of the following personnel may need to be contacted. The DAR Communication Plan is described in Section III:

- Director of the Division of Animal Resources (DAR)
- DAR Veterinary staff
- Animal care supervisory staff from affected Unit(s)
- Animal care staff from affected Unit(s)
- Community Emergency Response Personnel (e.g., firefighters, ambulance staff/paramedics, police)
- Division of Public Safety
- University Facilities and Services (F&S)
- Office of the Vice Chancellor for Research (OVCR)
- Division of Research Safety (DRS)
- Chair of the Institutional Animal Care and Use Committee (IACUC)
- Campus Emergency Operations Committee (CEOC)

Names, titles and contact information for these positions are listed in Appendix I. In general, the emergency number (911) would be used to contact any emergency response personnel, who would in turn bring in other Division of Public Safety personnel as appropriate. Facility employees should

notify DAR supervisors and department personnel only if time allows or after evacuating to a safe location.

The DAR Director, Assistant Directors, Facility Manager, Occupational Health and Safety Specialist, all veterinary and facility staff are considered essential personnel. Staffing levels during a disaster response is dependent on operational need and based on animal census, availability of support supplies and disruption of building function.

D. Scope

This Plan covers emergencies affecting DAR-Managed Animal Facilities and animal holding areas maintained by the Principal Investigators in departmental space adjacent to DAR animal facilities.

Buildings affected are:

- Beckman Institute - BI
- Burrill Hall – BH
- Burrill Hall Addition – BHA
- Chemical Life Sciences Lab – CLSL
- Edward R. Madigan Laboratory – ERML
- Institute of Genomic Biology – IGB
- Loomis Hall
- Medical Sciences Building – MSB
- Morrill Hall – MH
- Natural History Building – NHB
- Psychology Building – Psych
- Speech & Hearing Sciences Building – SPHS
- Vet Med Basic Sciences Building. – VMBSB
- Vet Teaching Hospital - Small Animal Clinic – SAC

II. Preparation and Training

A. Interface with Campus Emergency Policies and Procedures

1. This DAR Emergency Response Plan (DAR-ERP) is provided as an addendum to the Building Emergency Action Plans (BEAP) for buildings in which DAR managed facilities are located. It shall be made available to the Division of Public Safety and will be reviewed at least annually by the DAR and Public Safety.
2. The Division of Public Safety – Emergency Response Guide provides standardized campus procedures to protect human life and property in the event of an emergency. The guide is used in conjunction with the DAR Emergency Response Plan.

B. Review of DAR Emergency Response Plan

An annual review of the DAR-ERP will be coordinated by the DAR Assistant Director or designee. Updates will be integrated into the plan document. DAR Facility Coordinators will be notified of changes via e-mail and provided a revised copy of the Plan. The Annual Review date and description of the changes will be tracked using the Record of Plan Review and Changes – Appendix III.

C. Training of DAR Personnel

DAR will provide and document mandatory annual training for all DAR personnel on implementation of the emergency action plan. The DAR-ERP is reviewed at least annually and additional training is provided as needed. New employees will be trained within 30 days of their start date. A training record is found in Appendix IV.

Research staff housing animals in DAR-managed facilities or in outlying areas within the scope of this plan will be informed of the DAR Emergency Response Plan as part of the DAR Facility User Orientation or through individual lab training.

D. Location DAR Emergency Response Plan Document Copies

DAR Facility	Location
DAR Main Office	1 Observatory Building
Beckman	B614A Beckman - Staff Office
ERML	008 ERML - Basement Staff Office
ERML	122 ERML – First Floor Staff Office
IGB	231 IGB – Supervisor’s Office
Psychology	260C Psych – Supervisor’s Office
SMCB – Burrill	590B Burrill Hall – Staff Office
SMCB – Med Sci/Morrill	20 Morrill Hall – Staff Office
VMAF	1506 VMBSB – Staff Office

E. Emergency Resources and Unit Storage Locations

Emergency resources located within the DAR facilities are outlined in [Appendix VI](#) and will be shared between facilities as needed to facilitate a coordinated response to emergencies.

III. Emergency Notification Plan

A. Campus Emergency Notification System

Emergencies or critical incidents reported at the campus level will be communicated via the Illini Alert System (email, text and web-based alerts) and Public Media (television and radio).

B. DAR Communication Plan

Communication methods will include phone, text, email and runners depending on the scope of the emergency. DAR personnel will be provided copies of the DAR Emergency Contact Information ([Appendix I](#)) to facilitate phone communication during an emergency.

1. Emergency notification on-site:

It is the responsibility of those on-site to contact the DAR Main Office/business hours or the on-call veterinarian/after hours when an emergency affecting the animal holding area is determined.

- If a 911 call is required, this should be the first call made, prior to notifying DAR.
- In the absence of DAR or research staff, building operations staff will notify the DAR emergency contacts via university police dispatch. Current DAR contact information is provided to university police dispatch and F&S service office semiannually.

2. Emergency notification off-site:

It is the responsibility of DAR employees to contact their immediate supervisor to determine requirements for reporting to campus if a campus emergency notification is issued in which animal facilities may be affected.

- An employee may contact the DAR on-call veterinarian, director, assistant director, or facilities coordinators if their supervisor cannot be reached.
- Staffing levels during a disaster response is dependent on operational need and based on animal census, availability of support supplies and disruption of building function.
- If communication systems are not functional due to the scope of the emergency, employees are to report to their assigned facilities as soon as it is safe to do so.

3. Incident Command Center:

The Incident Command Center will be the primary on-site location to coordinate communication during an active emergency.

- The DAR Main Office – 901 S. Mathews Ave., Rm 1 Observatory, Urbana, IL
Multiple facility emergency response
- Animal Facility – Staff offices
Building emergencies that do not require evacuation
- Evacuation Meeting Place #1
Building emergencies requiring evacuation

C. Role of the Campus Emergency Operations Committee (CEOC) and the Associate Vice Chancellor for Research (AVCR)

The Associate Vice Chancellor for Research (AVCR), as a member of the Campus Emergency Operations Committee, will determine whether a critical incident has the potential to affect research animal facilities and, if deemed appropriate, will notify the DAR Director (or most senior DAR personnel available) and/or the Chair of the Institutional Animal Care and Use Committee (IACUC). The DAR Director or designee will provide status reports to the AVCR and IACUC chair during the active phase of an emergency.

IV. DAR Emergency Response Procedures

A. Emergency Response Plan Binders

Each DAR-managed animal facility will maintain a copy of the DAR-ERP, which will include:

- DAR Emergency Response Plan
- Appendices

1. Getting DAR-ERP to Emergency Response Personnel

The following DAR personnel have been designated to carry copies of the Plan out of buildings in an evacuation and distribute them to emergency response and critical incident personnel on the scene.

- DAR Assistant Director – Main Office
- Lab Animal Facilities Coordinator
- Lab Animal Care Supervisor
- Lab Animal Care Specialist

2. Emergency Response Plan Posters

Appendix V provides posters unique to each facility identifying evacuation and shelter in-place locations. Primary contact information is provided to facilitate notification of an emergency at the facilities.

B. Evacuation Procedures

Evacuation routes from the facility will be posted, and animal care personnel will be provided training on evacuation routes. Personnel will be trained on appropriate procedures prior to evacuating an animal facility and on safe meeting places under various types of emergencies.

- Facility personnel should ensure all occupants within the animal facility are properly notified and assisted with evacuation.
- Primary enclosures and doors to animal rooms should be closed securely prior to exiting an animal holding area.
- When possible, research staff actively performing animal procedures, should be assisted with stabilizing the animal (closure of surgical site, initiating recovery from anesthesia) and returning it to a primary enclosure prior to evacuating.
- Confidential files should be secured when doing so does not endanger personnel safety.

1. Evacuation Meeting Places

Meeting Place #1

In the event of a natural disaster calling for building evacuation, personnel will meet in a designated location and follow instructions from emergency response or building operations staff regarding return to the facility.

Meeting Place #2

In the event of an animal rights attack or an extended building evacuation, personnel will meet in a location that will provide protection from harassment and media but allow personnel to receive further instructions from supervisory staff regarding return to the facility. DAR administrative and supervisory staff should meet animal care personnel at this site and communicate with police via phone if possible.

C. Shelter In Place Procedures

Shelter in place locations will be posted, and personnel will be trained on appropriate procedures under various types of emergencies such as Tornado or Active Threat.

D. Campus-wide Emergency

An emergency affecting multiple buildings or campus-wide function that prohibits the ability of DAR staff to report to work (Weather/Road Closure/Campus Closure) will initiate the DAR Communication Plan. The DAR Director, Assistant Directors and Facility Coordinators will determine minimum staff levels based on current operational needs and coordinate call-in procedures to ensure animal care is provided. If closures can be anticipated, DAR Director or Assistant Directors may authorize accommodations to ensure essential staff remain on-site and available to respond to animal care.

E. Access to Areas

1. Animal Care or DAR Staff

Animal care or DAR staff should enter or re-enter an area affected by emergency only after notifying the appropriate emergency response team of their plan and receiving safety assurance and instruction from emergency response personnel.

2. Research Personnel

Research personnel with access to an affected area should notify DAR prior to taking action affecting laboratory animals involved in an emergency.

3. Animal Care, Research, or DAR Staff Already Within An Area Affected By An Emergency

Animal care, research, or DAR staff that is already in an area affected by an emergency should evacuate the area if this is called for as a safety precaution. In general, primary enclosures and doors to animal rooms should be closed securely prior to exiting an animal holding area. Confidential files should be secured if this does not endanger personnel safety.

4. Removal of Laboratory Animals

University-owned research and teaching animals should NOT be removed from an animal care facility without prior approval from DAR Director or Assistant Directors. If the scope of the emergency will allow, DAR will utilize unit and personal vehicles to transport animals to unaffected campus animal holding areas. University animals will NOT be transported off-campus without authorization by DAR Director or Assistant Director.

F. Unit Assessment of Disaster and Triage Plan

1. Notification of On-Call Veterinarian

Animal care or research staff allowed safe access to an area affected by an emergency should assess the situation of animal health, death, or safety and notify the on-call veterinarian. If the on-call veterinarian is not accessible due to the nature of the disaster, any DAR veterinarian, the DAR Director, or Assistant Director may be contacted.

2. Transfer of Animals Outside Affected Facilities

Animals should *not* be transferred to another animal care unit or non-animal holding area without authorization from a DAR veterinarian, the DAR Director, or Assistant Director.

3. Euthanasia

If animals are severely injured and/or suffering, animal care staff will consult with DAR veterinarians for approval to provide euthanasia.

4. Veterinary Evaluation of Affected Animals

A DAR veterinarian will evaluate animals that are affected but not severely injured/suffering as soon as possible. Situations include animals that have suffered minor injury, distress (e.g., extreme cold or heat or excessive smoke) or potential exposure to disease or contaminants (e.g., wild animals, and contaminated water).

5. Prioritization of Animals

If a disaster limits viable housing and resources, the DAR Director and/or Veterinarians will assess animal colonies to determine priority status affecting distribution of resources. Factors to consider include:

a. Species

1. Non-Human Primates
2. Dogs
3. Cats
4. Agricultural Species
5. Rabbits
6. Rodents
7. Non-Mammal – (Fish, Frog, Reptile)

b. Value

1. Ability to replace animals –Unique species or genotype
2. Duration of study
3. Availability of study materials

c. Vulnerability

1. Environmental extremes
2. Security

d. Transport

1. Ability to relocate

e. Hazards

1. Containment practices

6. Consultation with Research Personnel

When possible Principal investigators or personnel named on an animal use protocol will be consulted when animals are not severely injured and/or suffering but that a DAR veterinarian believes cannot be cared for under the circumstances and/or should no longer be maintained as a research, testing or teaching animal.

7. Provision of First Aid or Treatment to Animals

DAR veterinarians--or animal care or research staff under the direction of a DAR veterinarian--may proceed with first aid or treatment of animals that are injured but do not require euthanasia.

8. Press Releases

Members of the press requesting statements regarding the status of laboratory animals following an emergency should be directed to the Associate Chancellor for Public Affairs.

V. Follow-Up

A. Report to Work Following Disaster

Once personnel health and safety have been established and personal emergencies are stabilized, each DAR employee is expected to report to work for assignment. In the event of an animal rights attack or major demonstration, personnel should remain off-site and avoid confrontations and interviews with media until the DAR director reports that the situation has returned to normal. The DAR supervisory staff will consult with police to provide safe access to the facility for essential animal care.

B. Follow-Up Plan

DAR administration and affected unit supervisory staff will devise a follow-up plan based on an assessment of damage. Follow-up plans may include decontamination of animal care areas, equipment, feed and water; euthanasia or treatment of animals; transfer of certain animals to other animal care units when feasible; repair or replacement of essential equipment; sharing of animal care personnel between units as directed by the Vice Chancellor for Research (VCR) or DAR Director; and other efforts to return the animal care unit(s) to normal or acceptable operation.

C. Transport of Essential Personnel

In some cases, emergency response personnel may be asked to facilitate access by animal care staff to affected units in order to affect the devised follow-up animal care plan. Emergency response personnel will not directly transport animal care staff.

DAR and personal vehicles may be used to transport essential DAR personnel.

D. Status Report to the OVCR and IACUC

The DAR Director will notify the VCR and the chair of the IACUC of the emergency situation and follow-up plans. The chair of the IACUC or the VCR may call for an emergency meeting of the IACUC if decisions must be made for animal care, animal use or facility management that differ significantly from procedures previously approved or established.

Appendix I

Contact Information

Appendix I

DAR Emergency Contact Information

DAR-Main Office

Name	Title	DAR Facility	Office Phone	Mobile Phone	Pager	Alt. Phone
DAR Main Office			333-2564			Fax: 244-7963
On Call Vet			244-4100			
On Call Weekend Supervisor				649-4541		
Lyndon Goodly	Director, Attending Veterinarian	Office	333-4317	778-9733		
Sarah Allison	Asst. Director Clinical Vet	Office	265-6819	708-363-3280	261-1456	344-6447
Jennifer Criley	Asst. Director Clinical Vet	Office	265-8232	714-2470		590-4593
Margaret Clabaugh	Assistant Director HR - Training	Office	244-4101	493-2381		253-2381
Jerry Lauderdale	Facilities Manager	Office	244-6136	621-3931	265-3686	
Sara Myers	OHS Specialist	Office	244-0781	766-2028		
Jamie Price	Admin Aide	Office	265-5074	649-1202		
Deborah Harris	Office Support Associate	Office	300-3423	202-2082		722-1872
Doris Matthews	Clerical Assistant	Office	300-5429	778-3140		377-6949
Cher Cain	Veterinary Technician	Office	244-6597	417-1861	265-2496	
Raegan Carter	Veterinary Technician	Office	333-5820	309-533-0232	265-2844	
Phaedra Hutchison	Veterinary Technician	Office	244-3281	693-2773	265-2172	
Jamie Ludwig	Veterinary Technician	Office	333-0899	202-8800	265-2027	

Appendix I

DAR Emergency Contact Information

Name	Title	DAR Facility	Office Phone	Mobile Phone	Pager	Alt. Phone
Tonja Henze	Coordinator	Campus-wide	333-6672	493-6633	265-2587	
BECKMAN						
DAR-BI-STAFF	Staff Office, Hallways	Beckman	300-1574 244-4466		265-2106	Fax: 244-7273
Dack Shearer	Lab Animal Supervisor	Beckman	244-9736	714-2659	265-2106	
Danial Branson	Lab Animal Technician	Beckman	300-1574 244-4466	841-4179		688-2686
Eric Bialeschki	Lab Animal Caretaker	Beckman/SMCB	300-1574 244-4466	621-3397		
Reid McClure	Lab Animal Caretaker	Beckman	300-1574 244-4466			832-3080
Donnell Parker	Lab Animal Caretaker	Beckman	300-1574 244-4466	552-1019		
Danielle Lienard	Lab Helper	Beckman	300-1574 244-4466	714-2321		
ERML						
DAR-ERML-AF Containment	Hallways	ERML	300-3118		265-2625	
DAR-ERML-AF-Staff Basement	Staff Office - Hallways	ERML	244-6724		265-2625	
DAR-ERML-Staff 1st floor	Staff Office	ERML	300-2590		265-2625	Fax: NA
Pat Sergent	Animal Care Supervisor	ERML	333-3894	369-5472	265-2625	
Holly Clem	Lab Animal Specialist	ERML	300-3416	474-6150		548-2141
Bailey Reed	Lab Animal Caretaker	ERML	244-6724	369-2546		
E J Eastin	Lab Animal Caretaker	ERML	244-6724	649-3458		253-4685
Marc White	Lab Animal Caretaker	ERML	244-6724	309 - 531- 5454		
James Jones	Lab Helper	ERML	244-6724	751-2124		649-5313
IGB						
DAR-IGB-STAFF	Staff Office - Hallways	IGB	300-1578		265-2255	Fax: NA
Chris Learned	Lab Animal Supervisor	IGB/Psychology	244-5536	202-3189	265-2255	
Connie Haun	Lab Animal Technician	IGB	300-1578	218-1333		218-8899
Stacey Coffman	Lab Animal Caretaker	IGB	300-1578	417-6884		
Candace Flemming	Lab Animal Caretaker	IGB	300-1578	840-2455		

Appendix I

DAR Emergency Contact Information

Name	Title	DAR Facility	Office Phone	Mobile Phone	Pager	Alt. Phone
Tonja Henze	Coordinator	Campus-wide	333-6672	493-6633	265-2587	
PSYCHOLOGY						
DAR-PSYCH-STAFF	Staff Office	Psychology	300-3599		265-3766	Fax: 244-6977
Chris Learned	Lab Animal Supervisor	IGB/Psychology	244-5536	202-3189	265-2255	
Holly Fairfield	Lab Animal Specialist	Psychology	300-3599	840-9994	265-3766	
Do Ngo	Lab Animal Caretaker	SMCB/ Psychology	300-3599	766-2873		344-4389
SMCB						
DAR-BH-STAFF	Staff Office	SMCB Burrill Hall - BH	333-9626		265-2105	
DAR-MH-STAFF	Staff Office	SMCB Morrill Hall – MH Med Sci Bldg - MSB	300-1612		265-2918	Fax: 244-0316
DAR-BH-RQF	Rm 593 Anteroom	SMCB – BH	244-1580			
Jamie Reed	Animal Care Supervisor	SMCB BH-MH-MSB	300-3437	369-2612	265-2918	
Sirpa Kukkonen	Lab Animal Technician	SMCB BH-MH-MSB	333-9626	390-8792		
Galina Cotton	Lab Animal Caretaker	SMCB BH-MH-MSB	333-9626	390-5288		
Lieu Ngo	Lab Animal Caretaker	SMCB – BH	333-9626	419-1452		352-4839
Hoa Nguyen	Lab Animal Caretaker	SMCB – BH	333-9626	778-1858		344-3202
Lan Chi Nguyen	Lab Animal Caretaker	SMCB BH-MH-MSB	333-9626	637-1165		893-0180
Ngoan Nguyen	Lab Animal Caretaker	SMCB BH-MH-MSB	333-9626	693-2835		239-1874
Ryan Shaw	Lab Animal Caretaker	SMCB BH-MH-MSB	300-1612	841-8537		
Melynda Zindars	Lab Animal Caretaker	SMCB – MH/MSB	300-1612	280-1078		
Heather Boer	Lab Helper	SMCB BH-MH-MSB	300-1612	708 - 663- 4382		586-1434
Jeremiah Buchanan	Lab Helper	SMCB – MH/MSB	300-1612	217-671- 7894		762-7639
Mia Goodly	Extra Help	SMCB BH-MH-MSB	300-1612	778-7084		355-9228

Appendix I

DAR Emergency Contact Information

Name	Title	DAR Facility	Office Phone	Mobile Phone	Pager	Alt. Phone
Tonja Henze	Coordinator	Campus-wide	333-6672	493-6633	265-2587	
VET MED						
DAR-VMAF-STAFF	Staff Office – Hallways	VMAF	300-3565		265-3659	Fax: 244-6259
Joe Rohr	Lab Animal Supervisor	VMAF	300-3438	246-0433	265-3659	
Brandon Flanagan	Lab Animal Caretaker	VMAF	300-3565	390-5738		384-0498
Robert Hasty	Lab Animal Caretaker	VMAF	300-3565	714-2850		359-3657
Dylan McAllister	Lab Animal Caretaker	VMAF	300-3565	417-5569		417-1069
Darren Wilken	Lab Animal Caretaker	VMAF	300-3565	369-9475		568-7913

Appendix I

DAR Emergency Contact Information

Campus Administrative and Building Contacts

Name	Title	Department/ Work Site	Office Phone	Cellular Phone	Pager	Alt. Phone
Emergency		Police, Fire, Ambulance	911			
Campus Police	Non-emergency Dispatch		333-1216			
Facilities & Services		Service Office F&S	333-0340			Police Dispatch 333-1216
Earle Heffley	Operations Manager	Beckman	300-6707			Police Dispatch 333-1216
Jason Hatton	Facilities Manager	Beckman	244-4365			Police Dispatch 333-1216
Darren Gentzler	Facilities Manager	ERML	244-1924	649-4797		Police Dispatch 333-1216
Jesse Southern	Director of Facilities/Services	IGB	244-1834	898-4456		Police Dispatch 333-1216
James Clark	Facilities Manager	Psychology	333-7912			Police Dispatch 333-1216
Don Gerard	Facilities Manager	SMCB (BH/MH/MSB)	333-3047			Police Dispatch 333-1216
Karen Edwards	Director of Facilities	Veterinary Medicine	333-1646	721-0496		Police Dispatch 333-1216
Jeff Keyes	Coordinator Hospital Facilities	Veterinary Medicine	265-5498	714-1057		Police Dispatch 333-1216
Jan Novakofski	Assoc. VC for Research - Compliance	Office of Vice Chancellor for Research	244-3591			
Edward Roy	Chair – IACUC	Inst Animal Care & Use Committee	333-7789			
Robin Kaler	Assoc Chancellor for Public Affairs	Public Affairs	333-5010			893-3665
Peter Ashbrook	Director	Division of Research Safety	244-7801			
Maureen Banks	Director	Safety & Compliance F&S	244-0415			

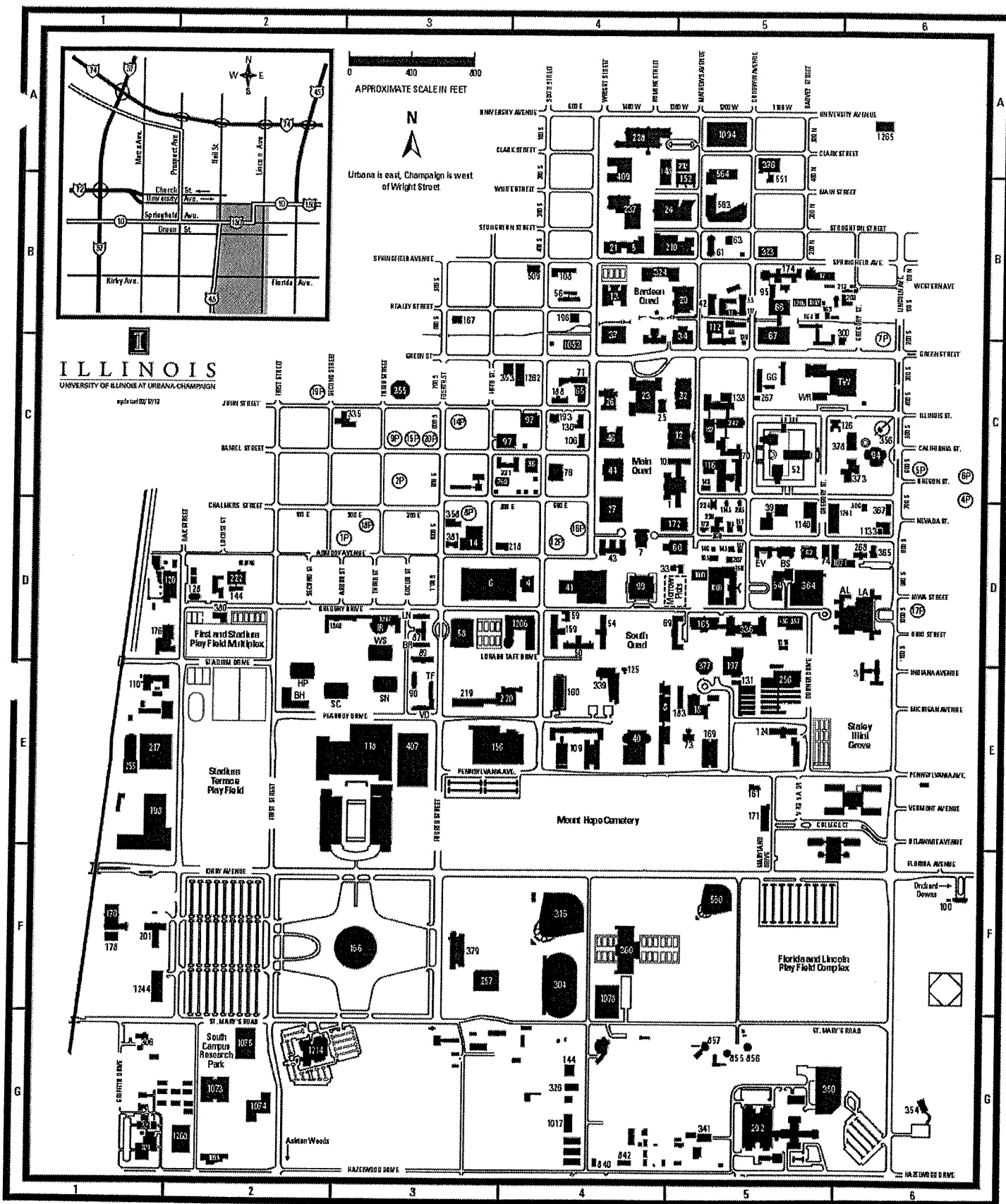
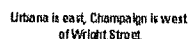
Appendix II

Floor Plans

**Campus Buildings Housing
Animals for Research and
Teaching**

Appendix II

Floor Plans: **DAR Shared\EmergencyResponsePlan**DAR Master Plan–Floor Plan 2013.pdf



Campus Map

The designation in parentheses (D1) indicates the map coordinates.

#	Building Name (Map Coordinates)
A	
120	Abbott Power Plant (D1)
77	ACES Library & Info Center (E5)
1	Activities and Recreation Cntr (E2)
8	Admissions and Records (C6)
17	Advanced Computation Bldg (B5)
1093	Aerodynamics Research Lab (B5)
28	Aeronautical Lab A (B5)
157	Afro-Amer Studies & Resch Prog (D5)
73	Agricultural Bioprocess Lab (E5)
8	Ag Engineering Sci Bldg (E4)
328	Agriculture Services Bldg (G4)
329	Ag Services Warehouse (G4)
824	Agronomy/Plant Path Farm (G4)
842	Agronomy Seed House (G4)
891	Agronomy Soybean Resch Farm (G5)
94	Alice Campbell Alumni Center (C6)
26	Altgeld Hall (C4)
831	Animal Science Barns (G3)
165	Animal Sciences Lab (D5)
374	Arboretum—Hartley Gardens (F6)
50	Architecture Bldg (D4)
6	Armory (D3)
219	Art & Design Bldg (E3)
18	Art E Annex, Studio 1 (E5)
2	Art E Annex, Studio 2 (E5)
1145	Asian American House (C6)
568	Asian American Studies Bldg (D5)
300	Astronomy Bldg (B5)
1075	Atkins Bldg (G2)
360	Atkins Tennis Ctr (F4)
208	Atmospheric Sciences Bldg (B6)
107	Atmospheric Sciences Annex 1 (B5)
139	Atmospheric Sciences Annex 2 (B5)
B	
228	Beckman Institute (A4)
335	Beckwith Hall (C2)
158	Bevier Hall (D5)
379	Bielfeldt Athletic Admin Bldg (F3)
307	Biological Control Lab (G1)
306	Building Research Council (G1)
169	Burnsides Resch Lab (E5)
138	Burnill Hall (C5)
<i>Business Instructional Facility</i> —see C 1206	
C	
376	Campbell Alumni Center—see A 94
	Campbell Hall for Public Telecommunications (A5)
384	Campus Recreation Ctr East (D5)
380	Campus Rec Outdoor Ctr (D2)
71	Career Center (C4)
285	Center for Advanced Study (C6)
170	Central Receiving Bldg (F1)
55	Ceramics Bldg (B5)
11	Ceramics Kln House (C5)
70	Chemical & Life Sci Lab (C5)
10	Chemistry Annex (C5)
1213	Chesterbrook Academy (F12)
62	Child Development Lab A (D5)
87	Clark Hall Housing Admin (D3)
130	Coble Hall (C4)
1206	College of Business Instructional Facility (D4)
167	Colonel Wolfe School (B3)
106	Computing Applications Bldg (B4)
148	Coordinated Science Lab (A4)
D	
855-857	Dairy Exper Round Barns (G5)
365	Dance Admin Bldg (D6)
268	Dance Studio (D6)
1	Davenport Hall (C5)
54	David Kinley Hall (D4)
1187	Demirjian Golf Practice Facility (G4)
210	Digital Computer Lab (B4)
1133	Doris Kelley Christopher Hall (D6)
144	Duplicating/Quick Copy Bldg (G4)
E	
1071	Early Child Development Lab (D5)
1140	Gregory Place I (C5)
160	Education Bldg (E4)
560	Eichelberger Field (F5)
409	Electrical and Computer

15	Engineering Bldg (A4)
162	Engineering Hall (B4)
174	Engineering Sr Design Studio (B6)
1209	Engineering Sciences Bldg (B5)
44	Engineering Student Project Lab (B5)
1095	English Bldg (C4)
213	Enterprise Works (G2)
107	Environmental Health & Safety (B6)
37	Environmental Resch Annex (B5)
	Everitt Lab (B4)
F	
556-557	Fire Substation (D5)
89	Flagg Hall (E3)
7	Foellinger Auditorium (D4)
1073	Forbes Natural History Building (G2)
172	Foreign Languages Bldg (D4)
64	Freer Hall (D5)
G	
201	Garage/Car Pool (F1)
128	Geological Survey Lab (D1)
74	Govt & Public Affairs, Inst of (D5)
324	Grainger Engr Library Info Ctr (B4)
43	Gregory Hall (D4)
1241	Gregory Place II (School of Social Work) (D5)
H	
4	Harding Band Bldg (D4)
25	Harker Hall (C4)
	Hartley Gardens—see A 374
356	Hallene Gateway (C6)
46	Henry Admin Bldg (C4)
217	Housing Food Stores (E1)
58	Hull Hall (D3)
152	Hydrosystems Lab (A5)
I	
14	Ice Arena (D3)
1214	I Hotel & Conference Center (G2-3)
1247	Ikenberry Dining Hall (D3)
65	Ilini Hall (C4)
23	Ilini Union (C4)
106	Ilini Union Bookstore (C4)
316	Illinois Field (F4)
369	International Studies Bldg (C3)
1080	Institute for Genomic Biology (D5)
381	Irwin Academic Services Ctr (D3)
407	Irwin Indoor Football Pract Fcldy (E3)
J-K	
354	Japan House (G6)
21	Kenney Gym (B4)
5	Kenney Gym Annex (B4)
220	Krannert Art Museum & Kinkad Pavilion (E3)
52	Krannert Ctr for Performing Arts (C5)
L	
218	Labor & Employment Relations, School of (D3)
	Large Animal Clinic—see V 292
156	Law Bldg (E3)
126	Levis Faculty Ctr/Visitor Ctr (C5)
41	Library (D4)
331	Library & Information Science (C3)
27	Lincoln Hall (D4)
67	Loomis Lab (B5)
M	
336	Madigan Lab (D5)
178	Mailing Ctr (F1)
29	Materials Sci & Engr Bldg (B5)
34	McKinley Health Ctr (E6)
3	Meat Science Lab (E5)
171	Mechanical Engineering Bldg (B5)
112	Mechanical Engineering Lab (B5)
192	Medical Sciences Bldg (C5)
72	Memorial Stadium (E3)
237	Micro & Nanotechnology Lab (B4)
242	Monrill Hall (C5)
69	Mumford Hall (D4)
125	Mumford House (E4)
39	Music Bldg (D5)
506	Music Education Annex (D6)
N	
124	National Soybean Resch Ctr (E5)
568	Native American House (D5)
32	Natural History Bldg (C5)
109	Natural Resources Bldg (E4)
321	Natural Res Studies Annex (G1)
564	NCSA (A5)
1244	NCSA Petascale Computing

Facility (F1)	
	Newmark Lab (B4)
	Noble Hall (E3)
	North Campus Chiller Plant (A5)
	North Campus Parking Deck (A5)
	Noyes Lab (C5)
	Nuclear Engineering Lab (B5)
	Nuclear Physics Lab (E1)
	Nuclear Radiations Lab (B5)
	Nursing, School of (C5)
O	
33	Observatory (D5)
196	Optical Physics & Engr Lab (B4)
P	
97	Parking Structures (C3, A5)
556-557	Parking Structure/Fire Substation (D5)
154	Personnel Services Bldg (D2)
188	Physical Plant Service Bldg (E1)
	Plant & An Biotech Lab—see M 336
	Plant Clinic (G4)
885	Plant Sciences Lab (E5)
256	Plant Services Bldg NE (B5)
77	Plant Services Storage Bldg (B5)
163	Police Training Institute (D3)
358	President's House (F6)
100	Printing Services Bldg (D2)
144	Professional Arts Bldg (B4)
509	Psychology Bldg (C4)
76	Public Safety (B5)
323	
R	
176	Rehabilitation Education Ctr (D1)
	Research Park (G2)
551	Richmond Studio (A5)
1288	Robert A. Evers Laboratory (G2)
116	Roger Adams Lab (C5)
S	
1241	School of Social Work (Gregory Place II) (D5)
66	Seitz Materials Research Lab (B5)
563	Siebel Ctr for Computer Sci (E5)
	Small Animal Clinic—see V5
60	Smith Hall (D4)
209	Speech & Hearing Clinic (C4)
373	Spurlock Museum (C6)
166	State Farm Center (F3)
40	Stock Pavilion (E4)
71	Student Services Arcade Bldg (E4)
164	Structural Warehouse (B5)
95	Superconductivity Ctr (B5)
59	Surveying Bldg (D4)
103	Swanlund Admin Bldg (C4)
T	
161	Taft House (E5)
13	Talbot Lab (B4)
1083	Technology Place (C4)
339	Temple Hoyne Buell Hall (E4)
355	Tower on Third (C3)
304	Track & Soccer Stadium (F4)
42	Transportation Bldg (B5)
197	Turner Hall (E5)
131	Turner Hall Greenhouses (E5)
188	Turner Student Services Bldg (C4)
U	
257	Ubben Basketball Facility (F3)
89	Undergraduate Library (D4)
61	University High School (B5)
63	University High School Gym (B5)
255	University Press Bldg (E1)
V	
1018	Vegetable Crops Bldg (D5)
1265	Vermilion Development Building (C3)
350	Vet Med Basic Sciences Bldg (G5)
341	Vet Med Feed Storage Bldg (G5)
287	Vet Med Surgery & Obstetrics Lab (G5)
292	Vet Teaching Hospital (G5)
	Visitor's Center—see L 126
56	Vivarium, Sheldorf (B4)
155	Volatile Storage Bldg (E1)
W	
183	Wood Engineering Lab (E5)
159	Wohlers Hall (D4)
Z	
1074	Z Bldg (G2)

BUILDINGS BY ADDRESS

262	510 East Chalmers (C4)
235	512 East Chalmers Street (C4)
362	507 East Daniel Street (C4)
250	812 South Fifth Street (C3)
353	505 East Green Street (C4)
1262	507 East Green Street (C4)
173	708 South Mathews Avenue (D5)
367	901 W. Oregon (D6)
185	1203 West Nevada Street (D5)
207	1203 West Nevada Street (D5)
151	1204 West Nevada Street (C4)
146	1205 1/2 West Nevada Street (C4)
184	1208 West Nevada Street (C4)
205	1203 West Oregon Street (D5)
238	1207 West Oregon Street (D5)
221	805 West Pennsylvania (E6)
214	911 South Sixth Street (C4)

UNIVERSITY RESIDENCE HALLS

Undergraduate Halls

Champaign Residence Halls

BR	Barton (D3)
HP	Hopkins (E2)
IR	Ikenberry (D3)
LN	Lundgren (D3)
NU	Nugent (D3)
BH	Bousfield Hall (D2)
SC	Scott (E2)
SN	Snyder (E3)
TF	Taft (E3)
VD	Van Doren (E3)
WS	Weston (D3)

Urbana North Residence Halls

AL	Allen (D6)
BS	Bussey-Evans (D5)
LA	Lincoln Ave (Shelden-Leonard) (D6)
	Minois Street
TW	Townsend (C6)
WR	Wardall (C5)

Urbana South Residence Halls

Pennsylvania Avenue

BB	Babcock (E6)
BL	Blaisdell (E6)
CR	Carr (E6)
SD	Saunders (E6)

Florida Avenue

OG	Oglesby (E6)
TR	Release (E6)

Graduate Halls

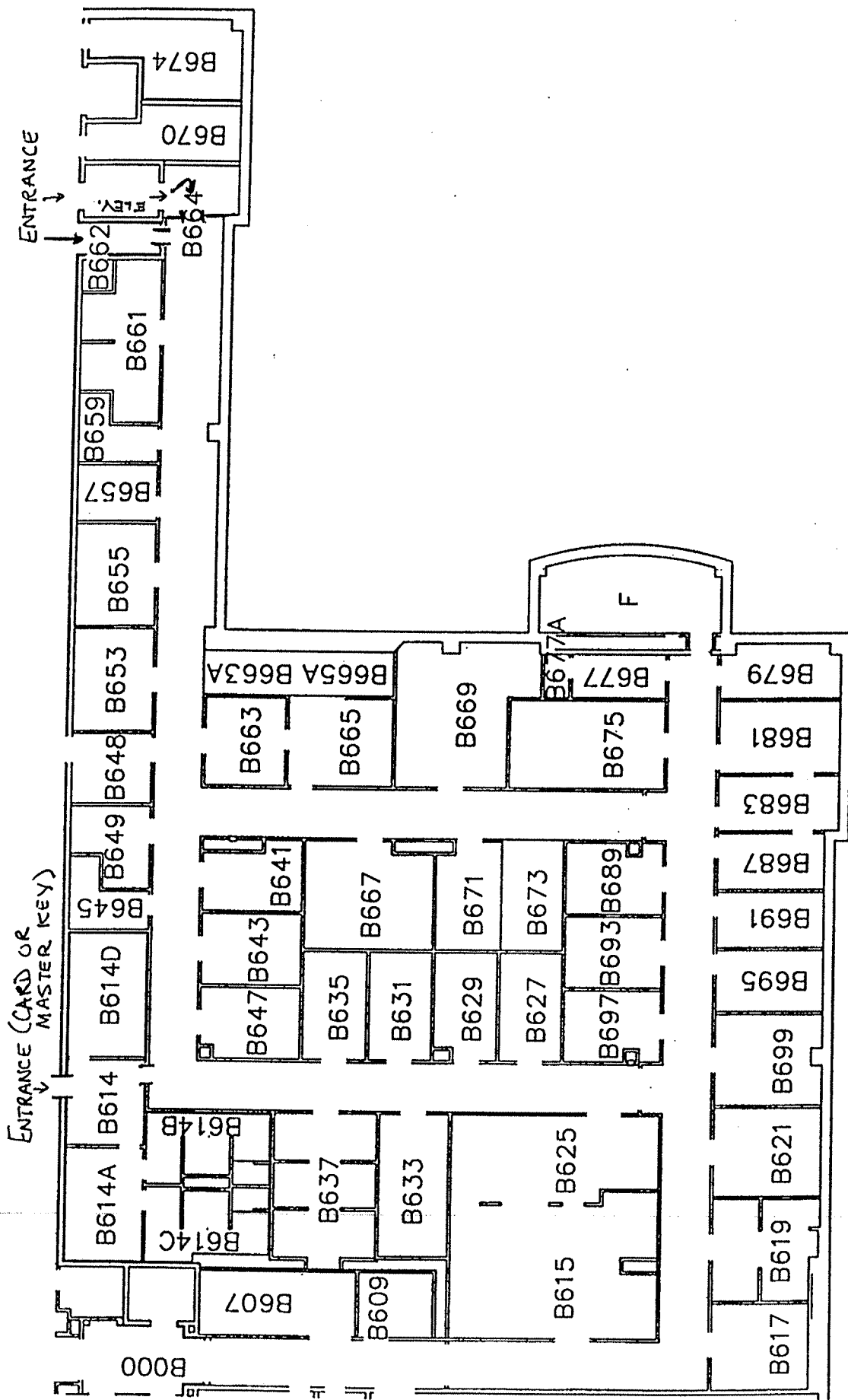
DN	Daniels (B5)
SM	Sherman (C3)

Family Housing

AW	Ashton Woods (south of G2)
GG	Goodwin/Green Apts (C5)
OD	Orchard Downs Apts (East of F6)

Private Certified Housing

1P	Armory House (D3)
2P	Bromley Hall (C3)
4P	Brown House on Coler (C6)
5P	Christian Campus House (C6)
6P	Europa House (C6)
7P	Hendrick House (B6)
8P	Ilini Tower (D3)
9P	Koinonia (C3)
12P	Newman Hall (D4)
14P	Presby House (C3)
15P	Stratford House (C3)
16P	University YMCA (D4)
17P	Nabor House (D6)
18P	Evans Scholars (D3)
19P	NKA House (C2)
20P	3:12 House (C3)



The
BECKMAN
INSTITUTE
 For Advanced Science and Technology

Basement Floor Plan

current date: January 2000

Scale: 3/64" = 1'

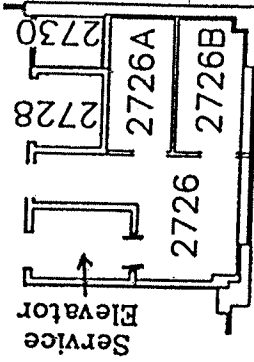
LABORATORY ANIMAL FACILITIES
 (BIOLOGICAL RESOURCES)



Environmental
Chamber



Environmental
Chamber



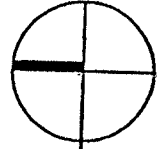
Animal
Holding

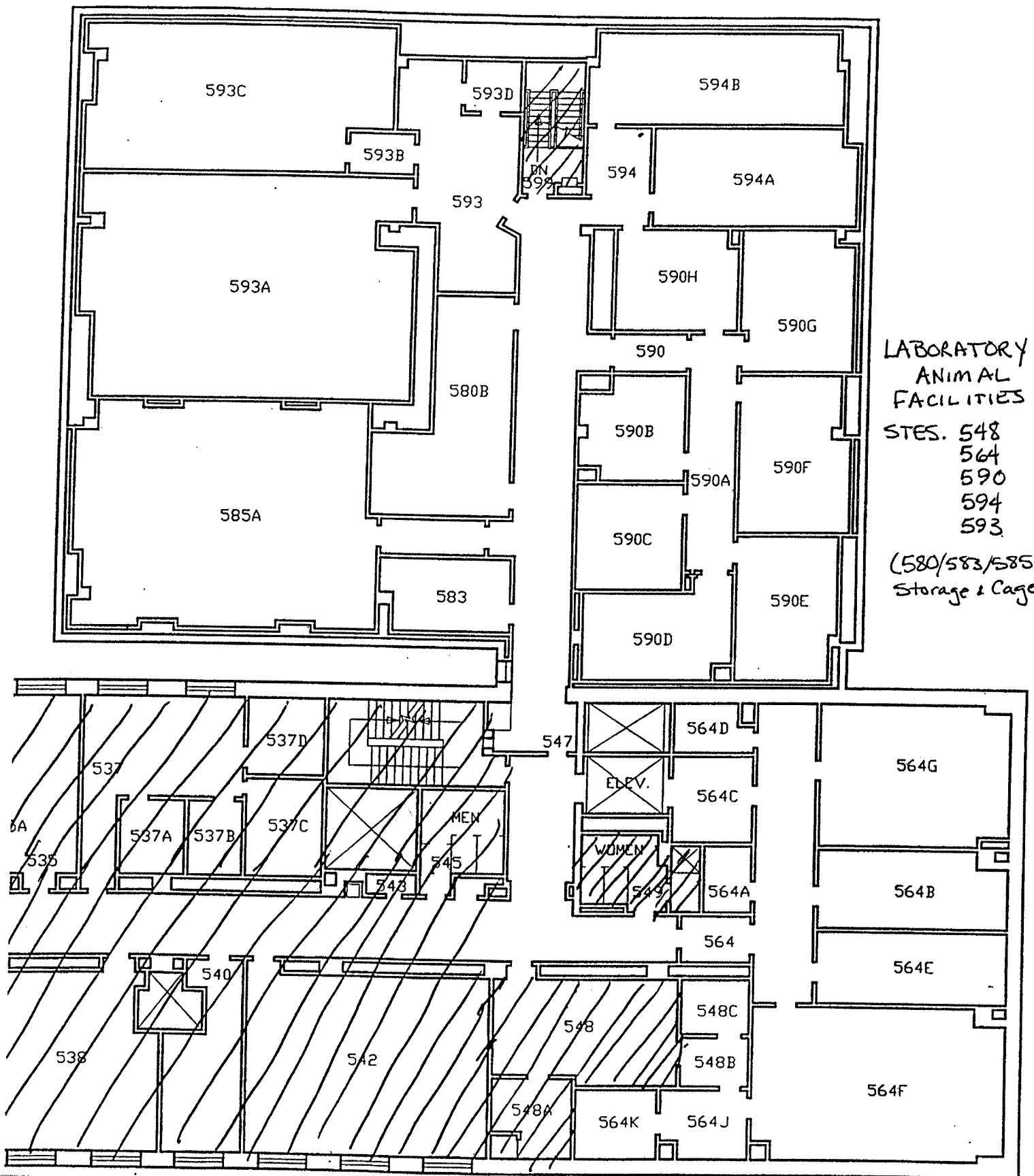
The
BECKMAN
INSTITUTE
For Advanced Science and Technology

Second Floor Plan

current date: January 2000

Scale: 3/16" = 1'





LABORATORY
ANIMAL
FACILITIES

STES. 548
564
590
594
593

(580/583/585:
Storage & Cages)

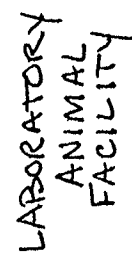
BUILDING #138
BURILL HALL

UNIVERSITY OF ILLINOIS
OPERATION AND MAINTENANCE DIVISION
1501 S. OAK ST., CHAMPAIGN, ILLINOIS 61820

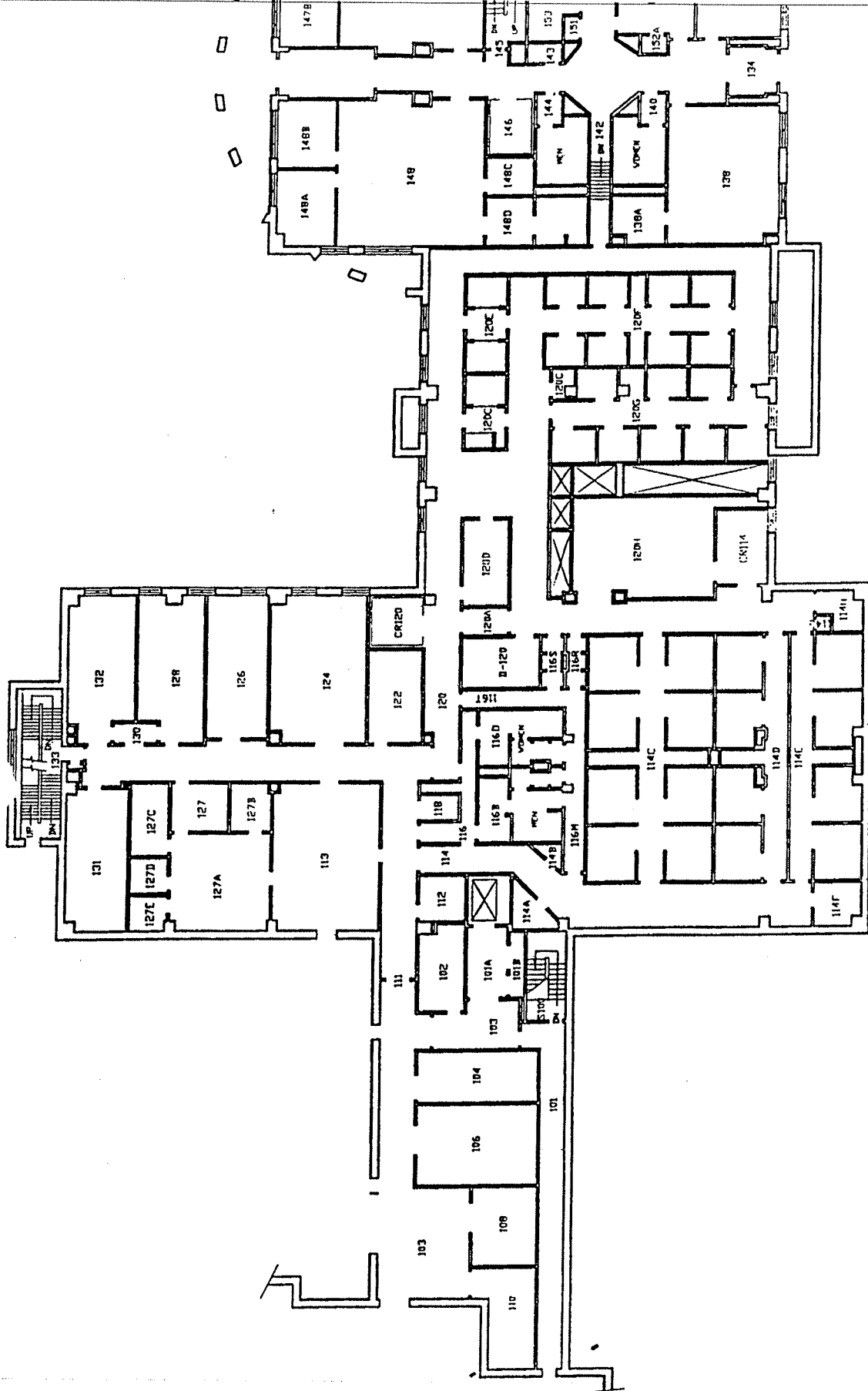


FIFTH FLOOR PLAN

0 8 16 24 32 FEET

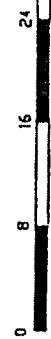
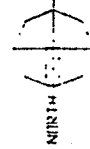


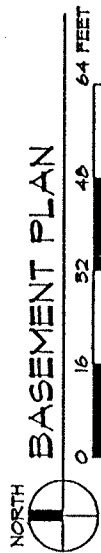
BASEMENT FLOOR PLAN



Building #336
Edward R. Madigan Lab
University of Illinois

First Floor FLOOR PLAN





NAME AND LOCATION OF STRUCTURE:

FILE NAME:

FILE NAME: B1080-00.DWG

FLOOR:

BASEMENT

DATE PRINTED:

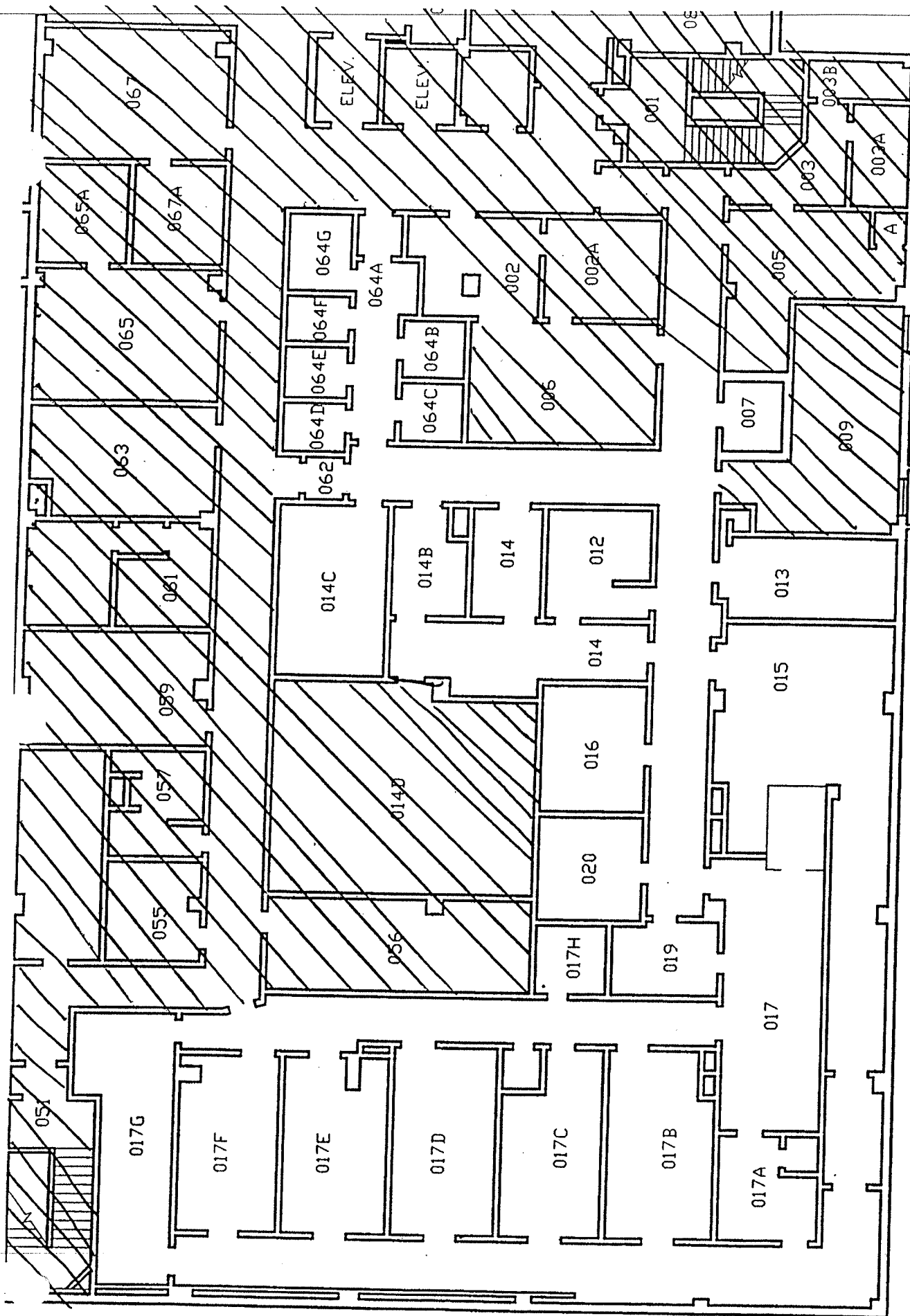
06 OCT 2009

BLDG. #
#1080

facilities & SERVICES
PLANNING DIVISION

POST GENOMICS INSTITUTE

UNIVERSITY OF ILLINOIS AT URBANA-CHAMPAIGN



GROUND FLOOR PLAN



LABORATORY
- ANIMAL FACILITY
RMS/STES. 13, 14, 15, 16, 17, 64
RMS. 19 & 20: support

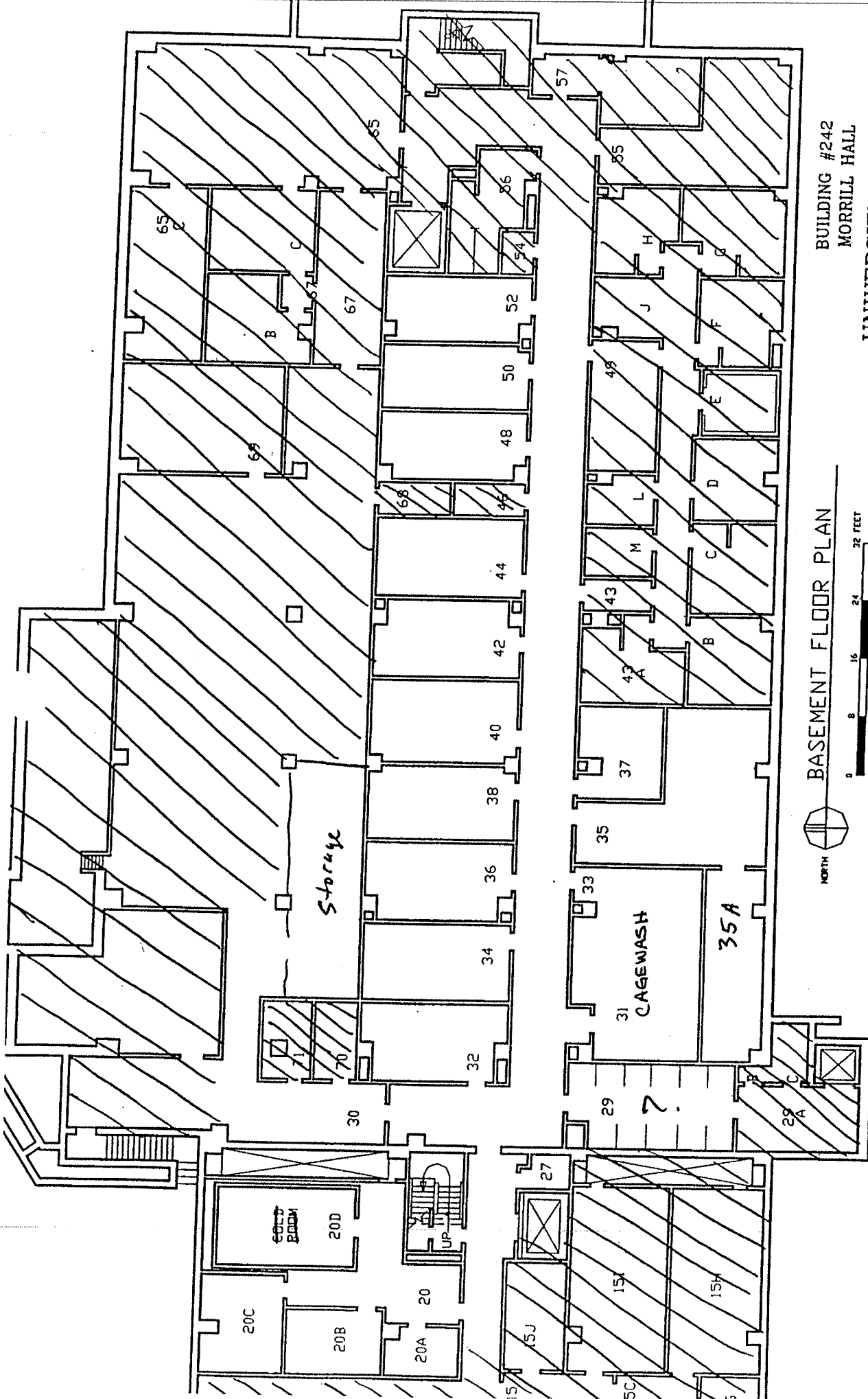
BUILDING #192

READING #192
MEDICAL SCIENCES BUILDING

UNIVERSITY OF ILLINOIS

OPERATION AND MAINTENANCE DIVISION

1501 S. OAK ST., CHAMPAIGN, ILLINOIS 61822



BUILDING #242
MORRILL HALL

UNIVERSITY OF ILLINOIS
OPERATION AND MAINTENANCE DIVISION
1501 S. OAK ST., CHAMPAIGN, ILLINOIS 6182

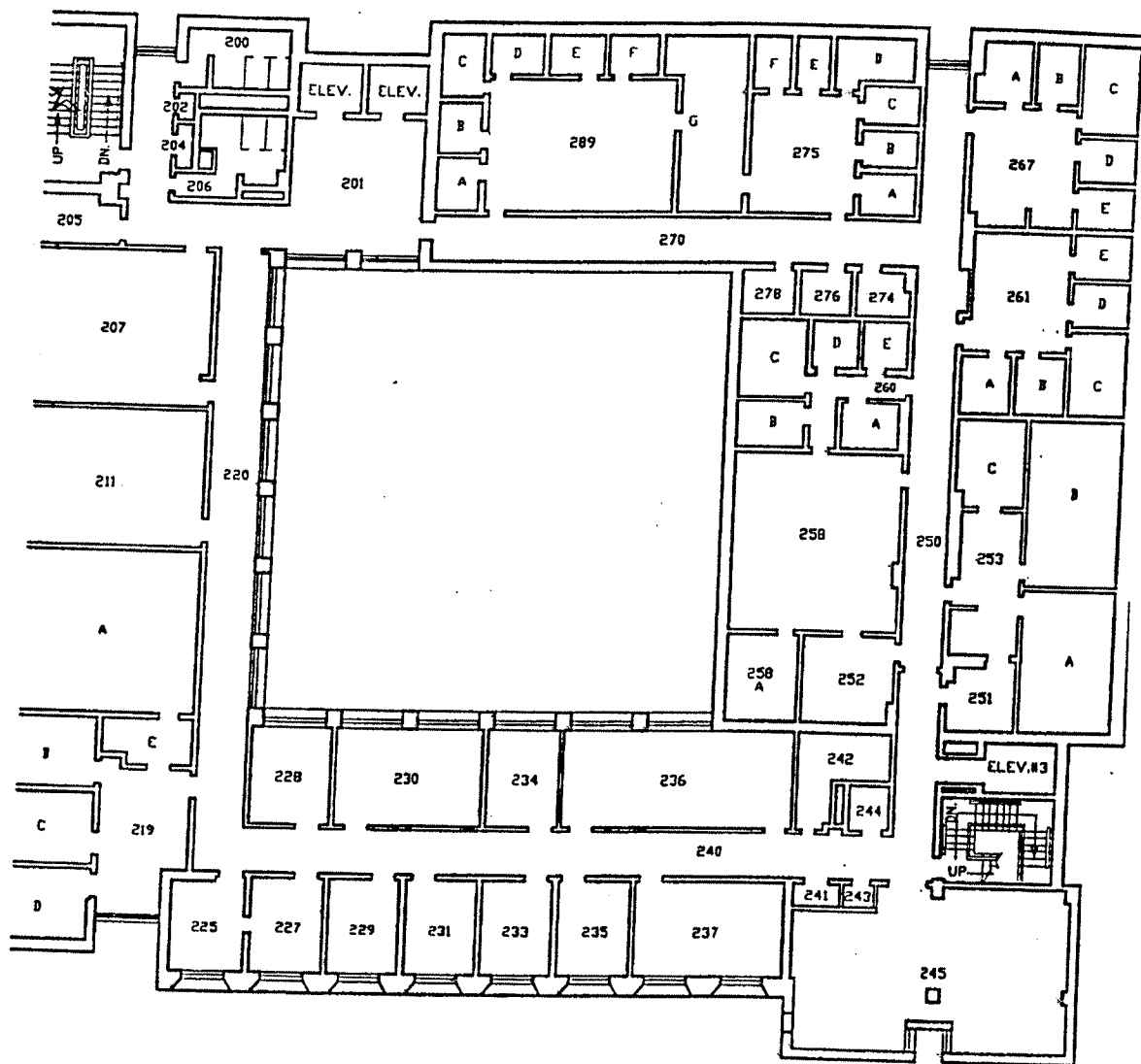
REV. 7/93

BASEMENT FLOOR PLAN

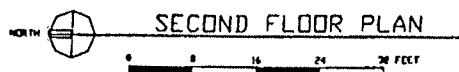
0 8 16 24 32 FEET

NORTH

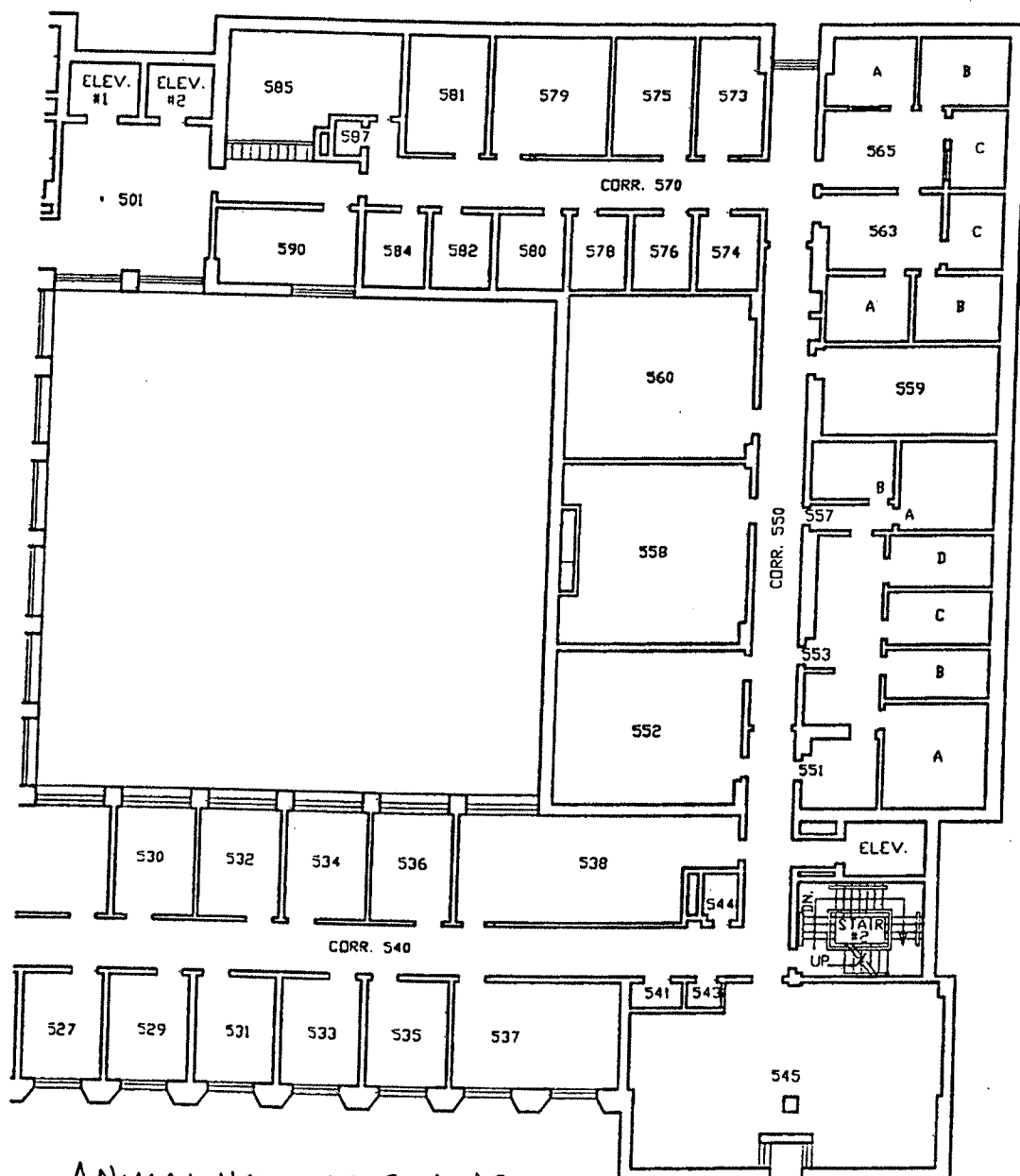
LABORATORY ANIMAL FACILITIES
RMS. 20, 31-52 (excl. 43, 46, 49)



ANIMAL HOUSING
S. WING
RMS. 251/253
OFFICES
RMS. 260 A-E

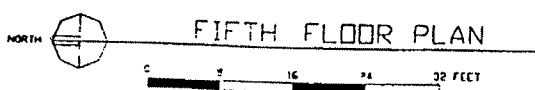


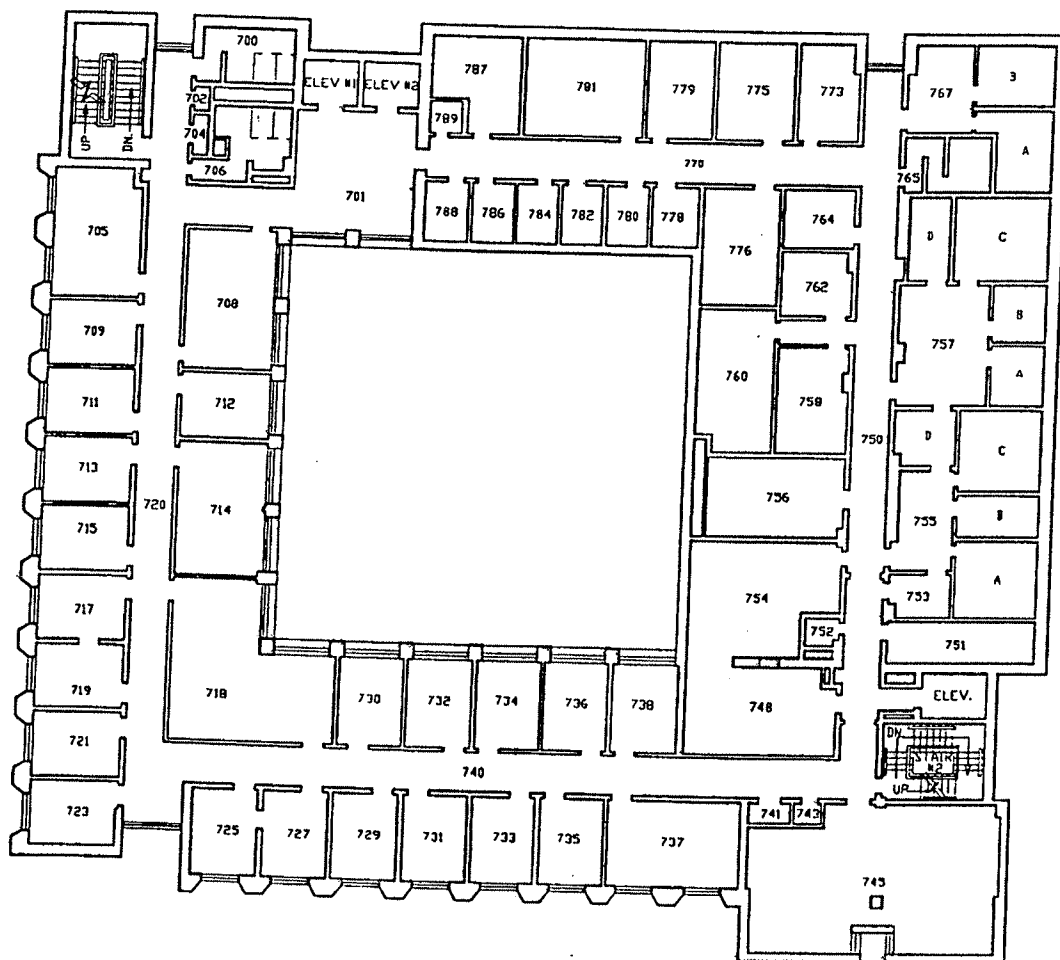
Building #76
Psychology Laboratory
University of Illinois




ANIMAL HOUSING, S. WING
STES. 551/553/557

Psychology Laboratory
University of Illinois

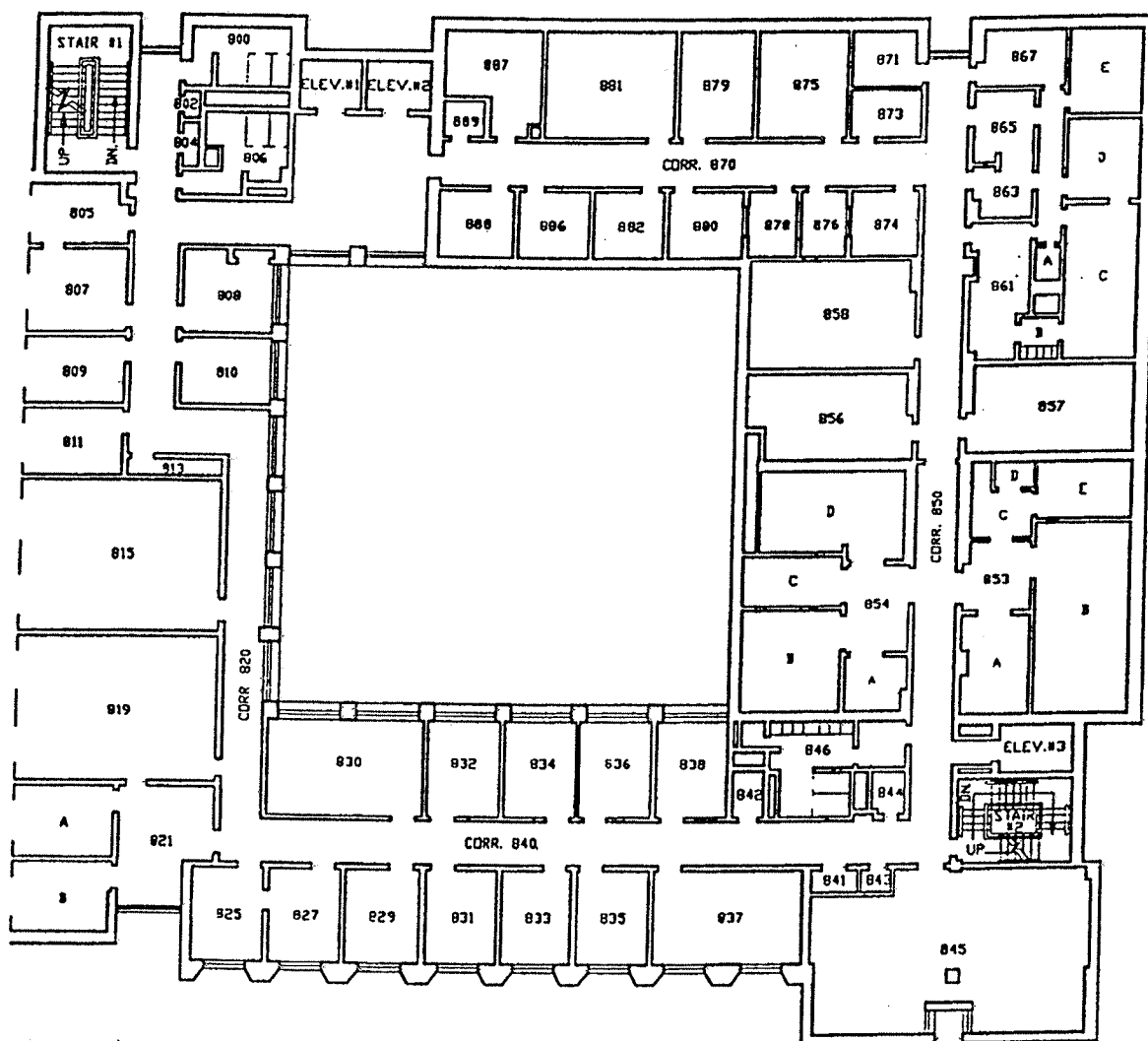




Building #76
Psychology Laboratory
University of Illinois

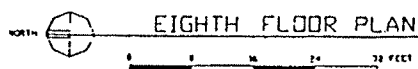
NORTH  SEVENTH FLOOR PLAN
0 8 16 24 32 FEET

ANIMAL HOUSING & CAGEWASH
S. WING
STE. 753/755/757
RM. 751
CAGEWASH & STORAGE 748/754

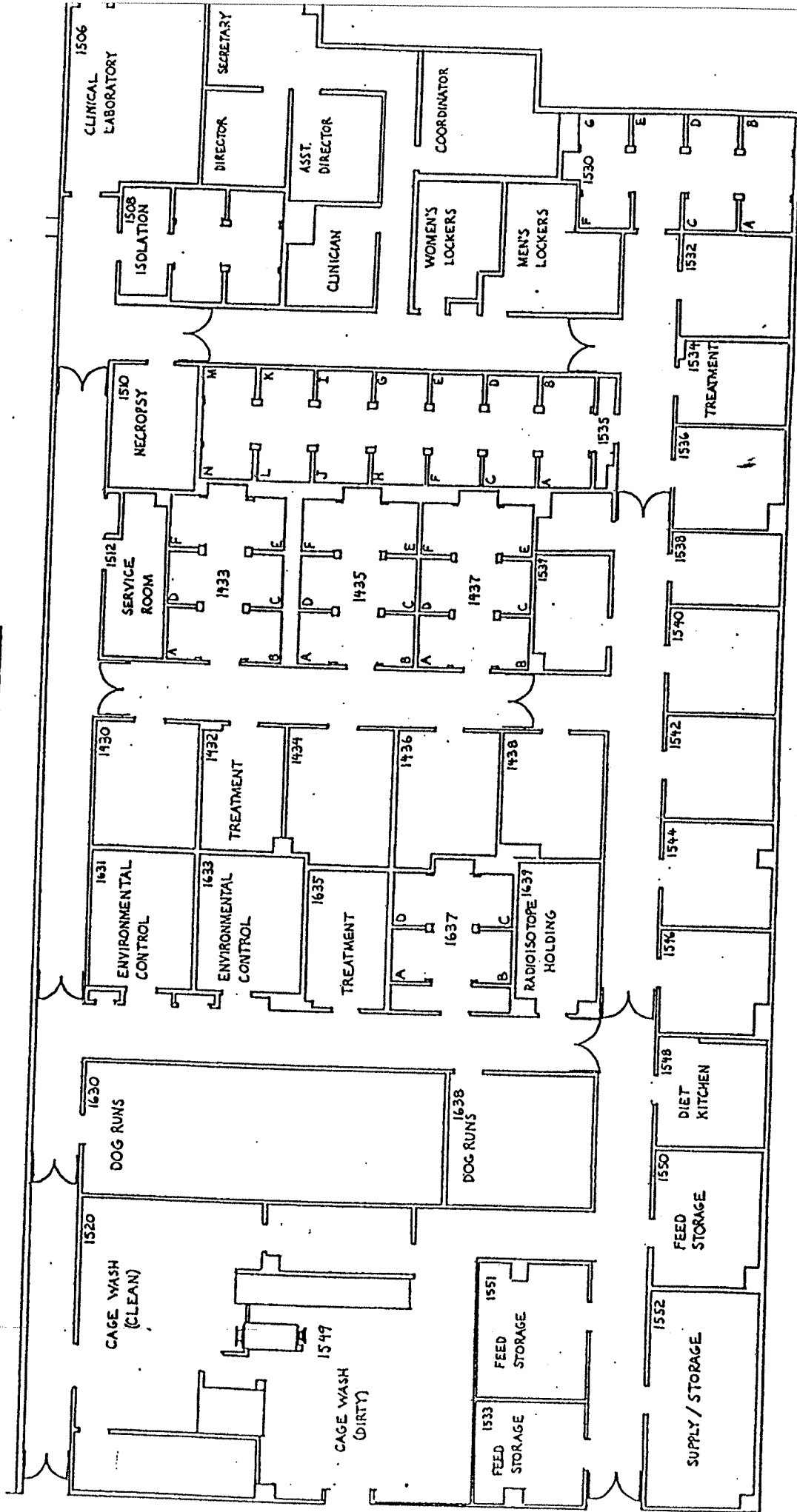


ANIMAL HOUSING & SURGERY
STES 853, 854

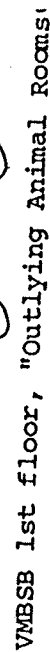
Building #76
Psychology Laboratory
University of Illinois



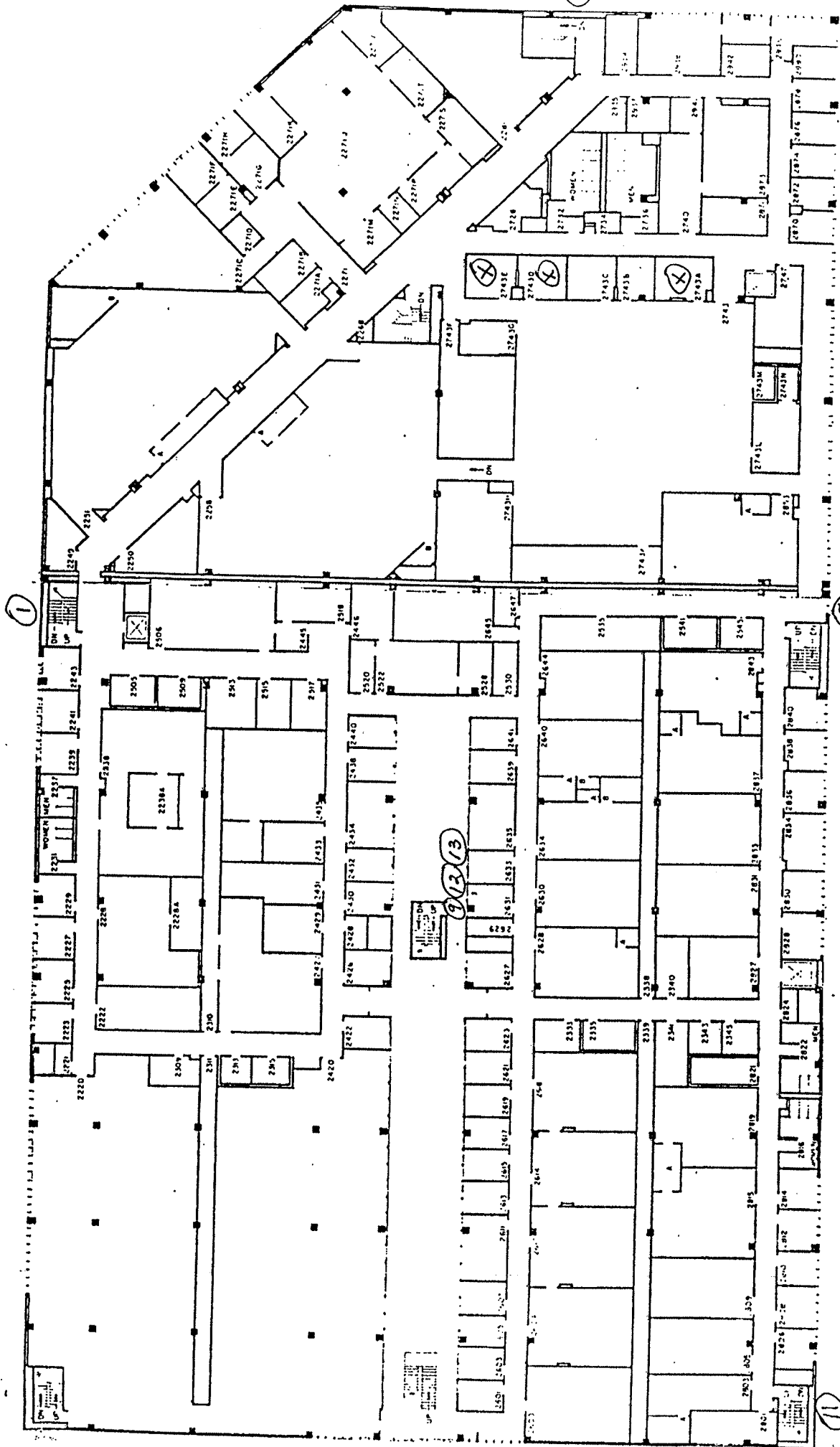
VMBSB ANIMAL CARE FACILITY



North
↓

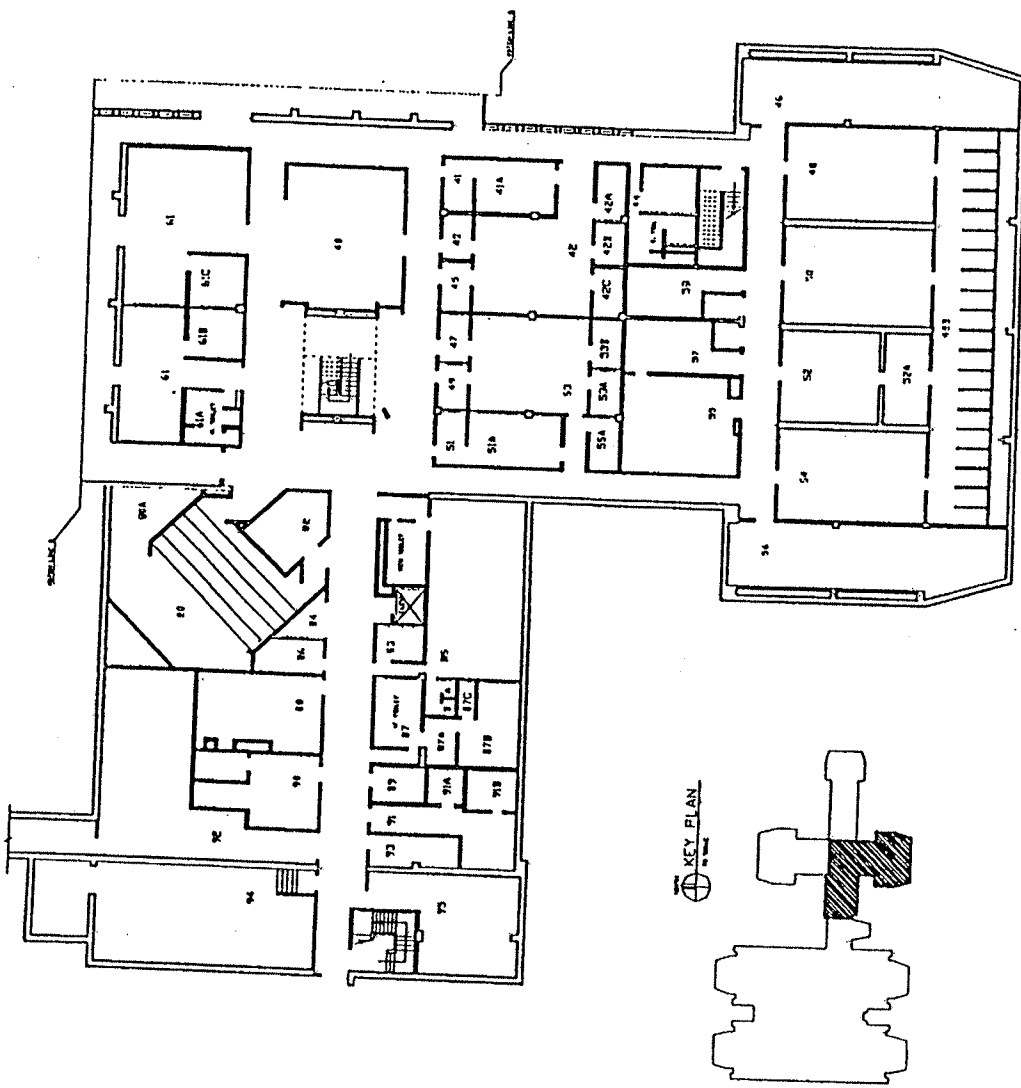


ANIMAL HOUSING RMS. 1743, 1801, 1939, 1941

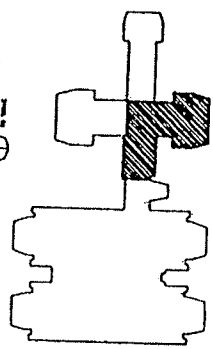


VMBSB, 2nd floor
"Outlying Animal Rooms"

⊗ ANIMAL ROOMS 2743 A, D, E



KEY PLAN



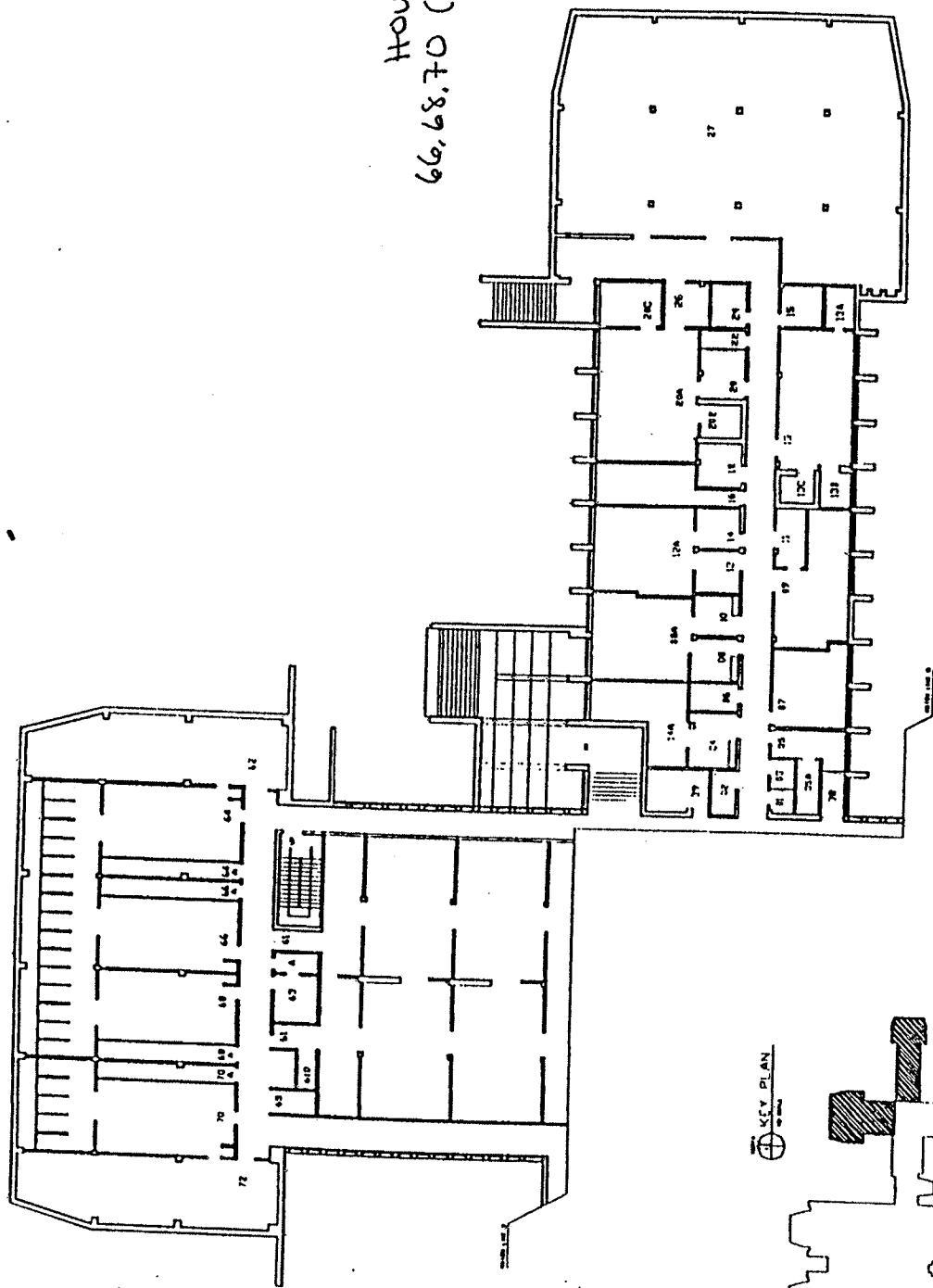
Small Animal Clinic (SAC)

⊕ BASEMENT FLOOR PLAN WEST & SOUTH WING

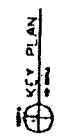
HOUSING
RMS. 48, 50, 52, 54 (S. WING)
66, 68, 70 (NORTH WING)

BUILDING #282
VETERINARY MEDICINE TEACHING HOSPITAL
UNIVERSITY OF ILLINOIS
OPERATION AND MAINTENANCE DIVISION
1501 S. OAK ST., CHAMPAIGN, ILLINOIS 61820
REV 5/92
B292-BS

HOUSING
66, 68, 70 (N. WING)



Small Animal Clinic (SAC)
BASEMENT FLOOR PLAN NORTH & EAST WING



Appendix III

Record of Plan

Review and Changes

Appendix III

RECORD OF PLAN REVIEW and CHANGES

1. The DAR Emergency Response Plan will be reviewed annually by DAR Assistant Director or designee.
2. Updates will be integrated into the plan document.
3. DAR Facility Coordinators will be notified of changes via e-mail and provided a revised copy of the Plan.
4. The Annual Review date and description of the changes will be entered on the log:

Date of Annual Review or Change	Description of Action – include Page(s) or Section(s) modified	Entered By
7/29/13	Section IV. F. - Unit Assessment of Disaster and Triage Plan: Addition: Section 5. Prioritization of Animals	M. Clabaugh
7/29/13	Appendix I – Modified – Staff Contact Information Appendix V – Emerg Action Plan Posters – ERML & IGB	M. Clabaugh
2/13/14	Appendix I - Modified – Staff contact Information Appendix V – Emerg Action Plan Posters – All facilities	M. Clabaugh
3/21/14	Section II. D. – Locations of Binders – ERML & Morrill Hall Appendix I – Modified – Staff Contact Information Appendix II - Campus Map	M. Clabaugh

Appendix IV

Emergency Plan

Training Record

Appendix IV

Training Program for Laboratory Animal Care Personnel

DAR Emergency Response Plan

(Mandatory Training - within 30days of new hire or changes to plan & annually)

Presented by _____ Date: _____

Participants:

[illegible]

Appendix V

Emergency Plan

Facility Posters

Appendix V

Emergency Action Plan – Beckman Animal Facility
Location – Rm - 405 N. Mathews, Urbana, Illinois

GET OUT

Evacuation Assembly Areas

1. Driveway by the East loading dock of Beckman Institute
2. Lobby of the Hampton Inn next to Perkins – North side of University Avenue

STAY IN

Storm Refuge Areas

1. Basement – Animal Facility
2. Basement Corridors

Security Threat

1. Secure office
2. Secure facility

EMERGENCY CONTACTS

Police, Fire, Ambulance 911

WARNING

- 911 Service may be limited or unavailable when using Lync
 - Use of a cellular or landline phone may be required in these situations.
- ALWAYS confirm your location and note possible facility access restrictions to responders.

Police – Non-emergency 217-333-1216

On-Call Veterinarian – DAR 217-261-1456

Division of Animal Resources 217-333-2564
Business Hours

Tonja Henze – Facility Coordinator O: 217-333-6672 M: 217-493-6633
P: 217-265-2587

Dack Shearer - Supervisor O: 217-244-9736 M: 217-714-2659

Jerry Lauderdale – Facilities Manager M: 217-621-3931

Emergency Action Plan – ERML Animal Facility

Location – Rm - 1201 W. Gregory Dr., Urbana, Illinois

GET OUT

Evacuation Assembly Areas

1. Loading dock between Madigan Lab and Animal Sciences Lab
2. DAR Main Office – Observatory Bldg.

STAY IN

Storm Refuge Areas

1. ERML or IGB Basement
2. Tunnel access between buildings

Security Threat

1. Secure office
2. Secure facility

EMERGENCY CONTACTS

Police, Fire, Ambulance

911

WARNING

- 911 Service may be limited or unavailable when using Lync
 - Use of a cellular or landline phone may be required in these situations.
- ALWAYS confirm your location and note possible facility access restrictions to responders.

Police – Non-emergency

217-333-1216

On-Call Veterinarian – DAR

217-261-1456

Division of Animal Resources - Business Hours

217-333-2564

Tonja Henze – Facility Coordinator

O: 217-333-6672
P: 217-265-2587

M: 217-493-6633

Patrick Sergent - Supervisor

O: 217-333-3894

M: 217-369-5472

Holly Clem - Specialist

O: 217-300-2590

Jerry Lauderdale – Facilities Manager

M: 217-621-3931

Appendix V

Emergency Action Plan – IGB Animal Facility
Location – Rm - 1206 W. Gregory Dr., Urbana, Illinois

GET OUT

Evacuation Assembly Areas

1. West sidewalk between IGB Gatehouse & Observatory Bldg.
2. DAR Main Office – Observatory Bldg.

STAY IN

Storm Refuge Areas

1. ERML or IGB Basement
2. Tunnel access between buildings

Security Threat

1. Secure office
2. Secure facility

EMERGENCY CONTACTS

Police, Fire, Ambulance

911

WARNING

- 911 Service may be limited or unavailable when using Lync
 - Use of a cellular or landline phone may be required in these situations.
- ALWAYS confirm your location and note possible facility access restrictions to responders.

Police – Non-emergency

217-333-1216

On-Call Veterinarian – DAR

217-261-1456

Division of Animal Resources - Business Hours

217-333-2564

Tonja Henze – Facility Coordinator

O: 217-333-6672

M: 217-493-6633

P: 217-265-2587

Chris Learned - Specialist

O: 217-244-5536

Jerry Lauderdale – Facilities Manager

M: 217-621-3931

Emergency Action Plan – Psychology Animal Facility
Location – Rm - 603 E. Daniel St., Champaign, Illinois

GET OUT

Evacuation Assembly Areas

1. University of Illinois Parking lot C-9, corner of Chalmers and Sixth Street
2. Espresso Royale Café, 602 E Daniel Street, located north of the Psychology Building

STAY IN

Storm Refuge Areas

1. Ground Floor
- 2.

Security Threat

1. Secure office
2. Secure facility

EMERGENCY CONTACTS

Police, Fire, Ambulance

911

WARNING

- 911 Service may be limited or unavailable when using Lync
 - Use of a cellular or landline phone may be required in these situations.
- ALWAYS confirm your location and note possible facility access restrictions to responders.

Police – Non-emergency	217-333-1216	
On-Call Veterinarian – DAR	217-261-1456	
Division of Animal Resources Business Hours	217-333-2564	
Tonja Henze – Facility Coordinator	O: 217-333-6672 P: 217-265-2587	M: 217-493-6633
Chris Learned - Specialist	O: 217-244-5536	
Holly Fairfield - Specialist	O: 217-333-8161	M: 217-840-9994
Jerry Lauderdale – Facilities Manager	M: 217-621-3931	

Appendix V

Emergency Action Plan – SMCB – Burrill Hall Animal Facilities Location – Rm - 407 S. Goodwin Ave., Urbana, Illinois

GET OUT

Evacuation Assembly Areas

1. Staff will assemble at locations in the following order based on buildings affected:
20 Morrill Hall - MH
590 Burrill Hall - BH
012 Medical Sciences Building - MSB
2. Southeast corner of Goodwin Ave. and Illinois St.- Near Krannert Steps

STAY IN

Storm Refuge Areas

1. Building basement corridor
2. Basement animal facilities in MH or MSB

Security Threat

1. Secure office
2. Secure facility

EMERGENCY CONTACTS

Police, Fire, Ambulance

911

WARNING

- 911 Service may be limited or unavailable when using Lync
 - Use of a cellular or landline phone may be required in these situations.
- ALWAYS confirm your location and note possible facility access restrictions to responders.

Police – Non-emergency

217-333-1216

On-Call Veterinarian – DAR

217-261-1456

Division of Animal Resources
Business Hours

217-333-2564

Tonja Henze – Facility Coordinator

O: 217-333-6672
P: 217-265-2587

M: 217-493-6633

Jamie Reed - Supervisor

O: 217-300-3437

M: 217-369-2612

Jerry Lauderdale – Facilities Manager

M: 217-621-3931

Emergency Action Plan – SMCB – Morrill Hall Animal Facilities
Location – Rm - 505 S. Goodwin Ave., Urbana, Illinois

GET OUT

Evacuation Assembly Areas

1. Staff will assemble at locations in the following order based on buildings affected:
20 Morrill Hall - MH
590 Burrill Hall - BH
012 Medical Sciences Building - MSB
2. Southeast corner of Goodwin Ave. and Illinois St. - Near Krannert Steps

STAY IN

Storm Refuge Areas

1. Building basement corridor
2. Basement animal facilities in MH or MSB

Security Threat

1. Secure office
2. Secure facility

EMERGENCY CONTACTS

Police, Fire, Ambulance

911

WARNING

- 911 Service may be limited or unavailable when using Lync
- Use of a cellular or landline phone may be required in these situations.

ALWAYS confirm your location and note possible facility access restrictions to responders.

Police – Non-emergency

217-333-1216

On-Call Veterinarian – DAR

217-261-1456

Division of Animal Resources
Business Hours

217-333-2564

Tonja Henze – Facility Coordinator

O: 217-333-6672

M: 217-493-6633

P: 217-265-2587

Jamie Reed - Supervisor

O: 217-300-3437

M: 217-369-2612

Jerry Lauderdale – Facilities Manager

M: 217-621-3931

Appendix V

Emergency Action Plan – SMCB – Medical Sciences Bldg. Animal Facilities **Location – Rm - 506 S. Goodwin Ave., Urbana, Illinois**

GET OUT

Evacuation Assembly Areas

1. Staff will assemble at locations in the following order based on buildings affected:
20 Morrill Hall - MH
590 Burrill Hall - BH
012 Medical Sciences Building - MSB
2. Southeast corner of Goodwin Ave. and Illinois St. - Near Krannert Steps

STAY IN

Storm Refuge Areas

1. Building basement corridor
2. Basement animal facilities in MH or MSB

Security Threat

1. Secure office
2. Secure facility

EMERGENCY CONTACTS

Police, Fire, Ambulance

911

WARNING

- 911 Service may be limited or unavailable when using Lync
 - Use of a cellular or landline phone may be required in these situations.
- ALWAYS confirm your location and note possible facility access restrictions to responders.

Police – Non-emergency

217-333-1216

On-Call Veterinarian – DAR

217-261-1456

**Division of Animal Resources
Business Hours**

217-333-2564

Tonja Henze – Facility Coordinator

O: 217-333-6672

M: 217-493-6633

P: 217-265-2587

Jamie Reed - Supervisor

O: 217-300-3437

M: 217-369-2612

Jerry Lauderdale – Facilities Manager

M: 217-621-3931

Appendix V

Emergency Action Plan – Vet Med Animal Facility
Location – Rm - 2001 S. Lincoln Ave., Urbana, Illinois

GET OUT

Evacuation Assembly Areas

1. Parking lot to the West of diagnostic receiving
2. SAC- hallway outside of room 48 & 50

STAY IN

Storm Refuge Areas

1. VMAF core facility
2. Hallway near diagnostic receiving

Security Threat

1. Secure office
2. Secure facility

EMERGENCY CONTACTS

Police, Fire, Ambulance

911

WARNING

- 911 Service may be limited or unavailable when using Lync
 - Use of a cellular or landline phone may be required in these situations.
- ALWAYS confirm your location and note possible facility access restrictions to responders.

Police – Non-emergency

217-333-1216

On-Call Veterinarian – DAR

217-261-1456

Division of Animal Resources
Business Hours

217-333-2564

Tonja Henze – Facility Coordinator

O: 217-333-6672
P: 217-265-2587

M: 217-493-6633

Joseph Rohr - Specialist

O: 217-300-3438

Jerry Lauderdale – Facilities Manager

M: 217-621-3931

Appendix VI

Emergency Resources

Appendix VI

EMERGENCY RESOURCES

DAR-North Campus

Emergency Equipment	Beckman (Rooms)	Psych (Rooms)	SMCB (Rooms)
Fire Extinguishers Corridors near:	B617, B657, B665, B689, B697	Southeast corner on each floor.	548, 564E – BH 594 – BHA 015, 017F, 064 – MSB 29, 36, 50, 43E, 65 – MH
Fire Sprinkler System	Yes	Yes	Yes – MH No – BH, BHA, MSB
First Aid Kits	B614A	253, 553, 748, 755, 853, 854	564C – BH 590B & 593 – BHA 012 – MSB 20 – MH
Flashlights	B699, B617, B621 – Red B614A – White	260C, 748 – White	564C BHA, 20 MH – Red 064 MSB – White 20B MH, 43F MH – White
Stored Potable Water Gel Packs			
Eye-Wash Stations	B615, B657	748	580A BH 015 MSB 33 MH
Emerg Shower Stations	B614B, B614C – Locker Rooms	642, 846 – Locker Rooms	Locker Rooms 545, 549 – BH 076, 078 – MSB
Chemical Spill Kits	B657	260C	590 – BHA 012 – MSB 20 – MH
Heaters/Fans	B679 (005 MSB – Shared stock)	653A (005 MSB – Shared stock)	005 MSB – Shared stock Animal rooms – BH
Generators	Building	Building	Building

DAR-South Campus

Emergency Equipment	ERML (Rooms)	IGB (Rooms)	VMAF (Rooms)
Fire Extinguishers (Corridors near)	010, 042, 050, 024 104, 113, 114, 120A, 120D, 120H,	221, 209, 203	1432, 1510, 1548, 1631, Facility West entrance-public hallway, 2743
Fire Sprinkler System			
First Aid Kits			
Flashlights			
Stored Potable Water Gel Packs			
Eye-Wash Stations	007	201, 212, 214, 216, 222	1549, 2743,
Shower Stations	120C, D120	201, 202, 216, 218	1637, 1639, 2743,
Chemical Spill Kits			
Heaters/Fans			
Generators			