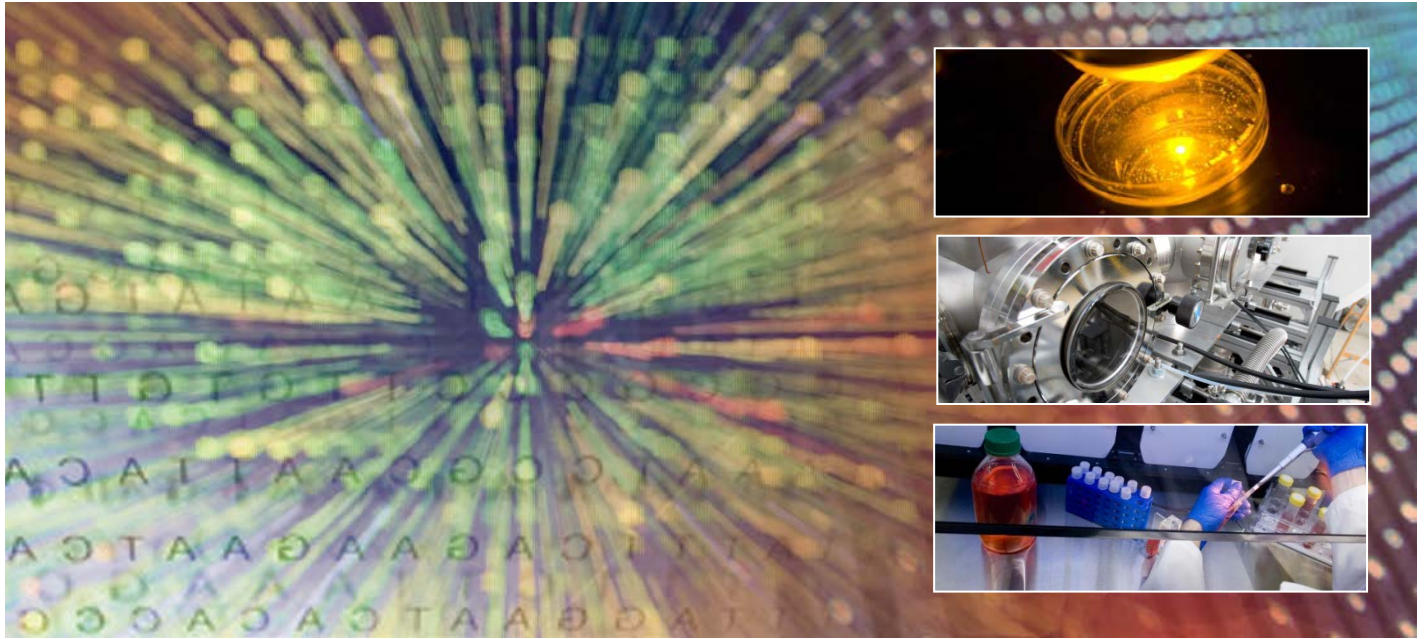


CARL R. WOESE

# INSTITUTE FOR GENOMIC BIOLOGY

IGB SEMINAR



## Functional Implications of Admixture Between Modern and Archaic Humans

**Janet Kelso, PhD**

Department of Evolutionary Genetics

Max Planck Institute for Evolutionary Anthropology

05.03.16

12:00 P.M.

IGB CONFERENCE CENTER  
1206 WEST GREGORY DRIVE  
URBANA, IL