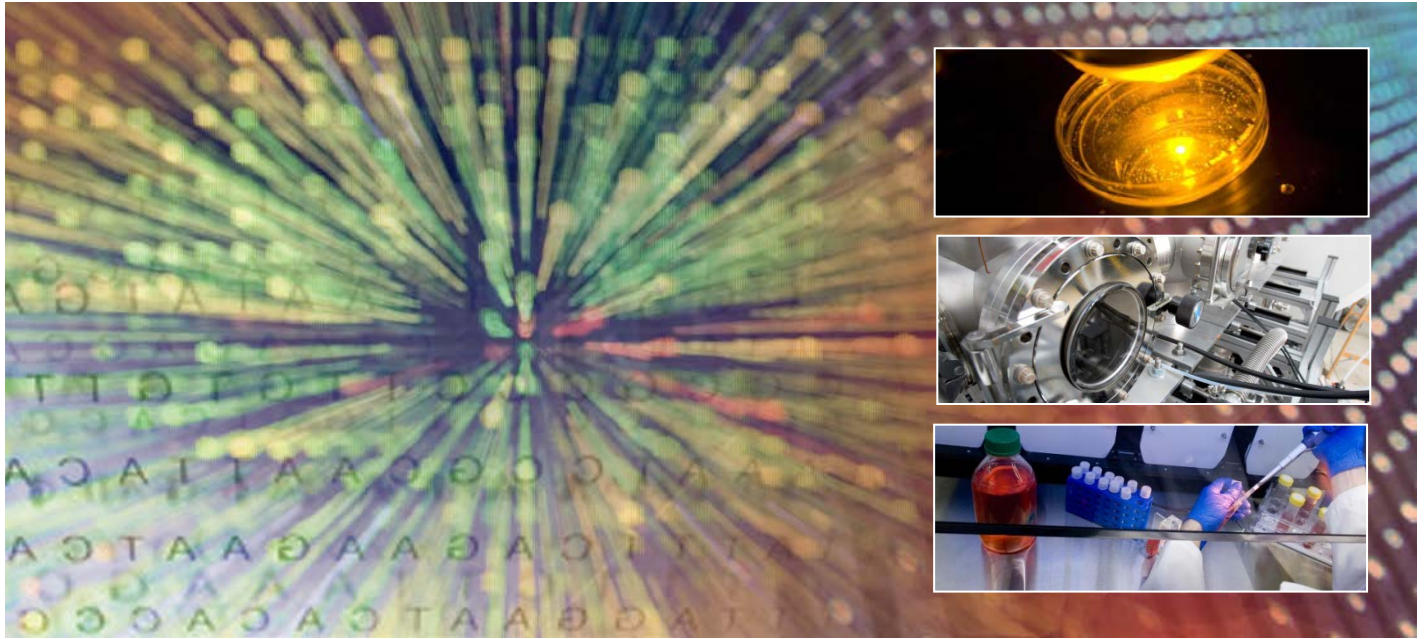


CARL R. WOESE

INSTITUTE FOR GENOMIC BIOLOGY

IGB SEMINAR



The social determinants of fitness in nonhuman primates: A gene regulatory perspective

Jenny Tung, PhD
Department of Evolutionary Anthropology
Duke University

10.11.16

12:00 P.M.

612 IGB
1206 WEST GREGORY DRIVE
URBANA, IL