

BUILDING EMERGENCY ACTION PLAN

Institute for Genomic Biology u1080 / 1206 West Gregory Drive, Urbana IL.

In any emergency situation you have a choice: **RUN**, **HIDE**, or **FIGHT**.

Only proceed if safe to do so.

RUN

Evacuation Assembly Areas¹

1. The sidewalk on the east side of the Morrow Plots
- 2.

HIDE

Storm Refuge Areas²

1. Lower level Corridors
2. Tunnels between IGB and ERML

Active Threat¹

1. Secure classroom.
2. Secure your office.

FIGHT

RUN

If you can safely leave the building, **RUN**.

HIDE

If you cannot safely leave, find a safe place to **HIDE**.

FIGHT

If you cannot RUN away safely or cannot HIDE, be prepared to **FIGHT** for your life.

NEED HELP?

Areas of Rescue Assistance²

1. All stair landings

More Info: <http://police.illinois.edu/run-hide-fight/>

¹ Contact Emergency Management at 217-333-1216 to identify appropriate locations.

² Contact Code Compliance & Fire Safety at 217-265-5268 to identify appropriate locations.

BUILDING EMERGENCY ACTION PLAN

Institute for Genomic Biology u1080 / 1206 West Gregory Drive, Urbana IL.

Emergency Response Recommendations

The Department of Homeland Security and the University of Illinois at Urbana-Champaign Office of Campus Emergency Planning recommend the following three responses to any emergency on campus: **RUN > HIDE > FIGHT**

Only follow these actions if safe to do so. When in doubt, follow your instincts—you are your own best advocate!

RUN

Action taken to leave an area for personal safety.

- Take the time now to learn the different ways to leave your building **before** there is an emergency.
- Evacuations are mandatory for fire alarms and when directed by authorities. **No exceptions!**
- Evacuate immediately. Pull manual fire alarm to prompt a response for others to evacuate.
- Take critical personal items only (keys, purse, and outerwear) and close doors behind you.
- Assist those who need help, but carefully consider whether you may put yourself at risk.
- Look for **EXIT** signs indicating potential egress/escape routes.
- If you are not able to evacuate, go to an Area of Rescue Assistance.
- Evacuate to Evacuation Assembly Area and remain until additional instructions are given.
- Alert authorities to those who may need assistance.
- Do not re-enter building until informed by emergency response personnel that it is safe to return.

ACTIVE THREAT:

- If it is safe to do so run out of the building. Get as far away as possible. Do not go to the Evacuation Assembly Area.
-

HIDE

Action taken to seek immediate shelter indoors when emergency conditions do not warrant or allow evacuation, such as for severe weather.

- Take the time now to learn the different ways to seek shelter within your building **before** there is an emergency.
- If you are outside, proceed to the nearest protective building.
- If sheltering-in-place due to severe weather, proceed to the identified Storm Refuge Area or to the lowest, most interior area of the building away from windows or hazardous equipment or materials.

ACTIVE THREAT:

- Lock or barricade your area.
 - Get to a place where the threat cannot see you.
 - Place cell phones on **silent**.
 - Do not make any noise.
 - Do not come out until you receive an Illini-Alert advising you it is safe.
-

FIGHT

Action taken as a last resort to increase your odds for survival.

ACTIVE THREAT:

- If you cannot run away safely or cannot hide, **be prepared to fight with anything available to increase your odds for survival.**
-

BUILDING EMERGENCY ACTION PLAN

Institute for Genomic Biology u1080 / 1206 West Gregory Drive, Urbana IL.

Emergency Notification Systems

University Notifications — The University of Illinois at Urbana-Champaign **MAY** utilize any of the following mechanisms to notify the campus community of an emergency situation:

- **Illini-Alert Emergency Text Notification System** — Illini-Alert is an “opt-in” system designed to deliver text messages to those who have registered for the service. Illini-Alert automatically triggers mass mail, emergency web alerts, Facebook and Twitter notifications. Sign up at <http://emergency.illinois.edu/>.
- **Public Broadcast Media Outlets** — The campus will utilize all necessary television and radio outlets to provide emergency information to the campus community.
- **NOAA Weather Radios** — The National Weather Service in Lincoln, Illinois, will post an alert message on NOAA weather radios.
- **Cable Channel UI-7** — Comcast Cable channel 7 will provide a scripted message on the bottom of the television screen. This can be utilized either before or after the Emergency Alert System is used.
- **265-UIPD** — An emergency voice message system will be provided via this telephone number to provide emergency information.
- **Telephone Alert System** — A systematic telephone call list or “telephone tree” designed to notify individuals throughout campus.

Access to University Notification mechanisms may be limited for occupants during an emergency. Buildings may need to provide their own Building and Department Internal Emergency Notifications.

Building and Department Internal Emergency Notifications - Individual buildings and departments may utilize their own mechanisms for communicating emergency information (i.e.: bullhorns, telephone trees, public address systems, and face-to-face contact). Ensure the following list is comprehensive enough to provide coverage for all areas. The following emergency notification system(s) and individuals have been identified specifically for your building to provide emergency information:

Emergency Notification System	Primary Communicator	Backup Communicator
Internal Email system	Nick Vasi	Dan Davidson
IGB website	Nick Vasi	Dan Davidson

BUILDING EMERGENCY ACTION PLAN

Institute for Genomic Biology u1080 / 1206 West Gregory Drive, Urbana IL.

Floor Coordinators

Individuals responsible for assisting with the orderly evacuation or sheltering-in-place of all personnel within their area of responsibility and physically accounting for those individuals once convened at the evacuation assembly area(s).

Role of Floor Coordinators

- All actions should be done only if it is safe to do so.
- Emergency response personnel (police/fire) have full authority to order an evacuation or shutdown (see Appendix C if applicable). Floor Coordinators and the Building Emergency Management Team can initiate an evacuation and/or shutdown of the building.
- Individuals identified as Floor Coordinators assume the role voluntarily and understand they are not considered emergency responders.
- Floor Coordinators must be physically and emotionally able to perform the necessary functions of providing assistance with notification, evacuation or sheltering-in-place. (This may include assisting persons with functional needs.)
- Floor Coordinators should report observations of persons in need of rescue assistance to emergency responders or Building Emergency Management Team members.
- Floor Coordinators should report observed damage of building systems to emergency responders or Building Emergency Management Team members.

Floor Coordinators and Areas of Responsibility

Floor Coordinator	Backup Coordinator	Area of Responsibility
Jesse Southern	Bob Mann	Gatehouse, Array Café, Mechanical rooms
Kate Janssen	Glen Fried	Biosystems Design Concourse
Dan Davidson	Joyce Koeberlein	Computer Network & Resource Group - Concourse
Austin Cypersmith		Core Facilities - Concourse
Susan Thomas	Melissa Zindars	Energy Biosciences Institute – 1S
Jing Dong	Don Ort	Genomic Ecology of Global Change – 1N
Susan Thomas	Melissa Zindars	Microbiome Metabolic Engineering – 1S
Brian Cunningham	Melissa Zindars	Omics Nanotechnology for Cancer Precision Medicine – 1S
Huimin Zhang	Amy Ahmed	Genomics of Neural & Behavioral Plasticity – 2N
Mikel Hernaez		HPCBio – 2N
Elizabeth Penner	Nikki Gentry	Anticancer Discovery from Pets to People
Elizabeth Penner	Derek Milner	Regenerative Biology & Tissue Engineering – 2S
Mindy Baughman	Connie Scott	Biocomplexity – 3N
Amy Weckle		Computing Genomes for Reproductive Health – 3N
Rachel Whitaker	Susan Flanegin	Infection Genomics for One Health – 3S
Hyoung Sook Ann		Mining Microbial Genomes for Novel Antibiotics – 3S

BUILDING EMERGENCY ACTION PLAN

Institute for Genomic Biology u1080 / 1206 West Gregory Drive, Urbana IL.

The following information has been voluntarily provided by those who have self-identified themselves as having a functional need. This information, since it is part of the BEAP, will be shared with employees within this building.

Persons with Functional Needs

The following are **self-identified** persons with functional needs who may request evacuation, shelter-in-place or any other types of reasonable assistance during an emergency:

	Name	Cell	Office Phone	Location
Person	None identified			
Buddy				
Special Need				

	Name	Cell	Office Phone	Location
Person				
Buddy				
Special Need				

	Name	Cell	Office Phone	Location
Person				
Buddy				
Special Need				

	Name	Cell	Office Phone	Location
Person				
Buddy				
Special Need				

	Name	Cell	Office Phone	Location
Person				
Buddy				
Special Need				

	Name	Cell	Office Phone	Location
Person				
Buddy				
Special Need				

	Name	Cell	Office Phone	Location
Person				
Buddy				
Special Need				

BUILDING EMERGENCY ACTION PLAN

Institute for Genomic Biology u1080 / 1206 West Gregory Drive, Urbana IL.

Building Emergency Management Team Contact Information

Name	Cell Phone	Office Phone	Home Phone	Email
Robert Mann Safety Coordinator	840-7964	244-8346	446-7990	bobmann@illinois.edu
Jesse Southern Facilities Manager	898-4456	244-1834	N/A	jsouther@illinois.edu
Nick Vasi Director of Communications	(617) 360-1013	333-0873	N/A	nvasi@illinois.edu

Attributes of Building Emergency Management Team Members

- May have authority to make overall decisions for the building and/or department.
- Has thorough knowledge of the building's operational needs.
- Able and willing to serve as a liaison to emergency responders and/or University administrators regarding, but not limited to, emergency needs, status reports, communications.
- May distribute information to building occupants or gather information needed for dissemination to the Office of Public Affairs.
- May maintain financial and administrative records.
- Should have understanding of other team member's roles and responsibilities to provide team continuity and support if one or more members are unavailable during emergency.

Roles of Building Emergency Management Team Members

- Planning and Preparedness Actions
 - Assist with identifying Evacuation Assembly Area(s).
 - Assist with identifying Storm Refuge Area(s).
 - Assist with identifying Command Post Location.
 - Assist with identifying Areas of Rescue Assistance.
 - Establish Building and Departmental Internal Emergency Notification list.
 - Identify Floor Coordinators and provide proper training and/or guidance.
 - Solicit the list of **Self-Identified** Persons with Functional Needs.
 - Prepare and submit BEAP to Office of Campus Emergency Planning for approval.
 - Review and update BEAP annually.
 - Create and establish annual training and exercise schedules to test functionality of BEAP.
- Response Actions
 - Initiate Building and Departmental Internal Emergency Notifications to occupants when emergency has been verified.
 - Deploy Floor Coordinators to evacuate or shelter-in-place as required.
 - Building Emergency Management Team Members report to designated Command Post.

If the emergency requires the **BUILDING EMERGENCY MANAGEMENT TEAM**:

Building Command Post

1. 350B Edward R Madigan Lab

BUILDING EMERGENCY ACTION PLAN

Institute for Genomic Biology u1080 / 1206 West Gregory Drive, Urbana IL.

Phone List

METCAD (Metropolitan Computer-Aided Dispatch) — 911

Primary public safety consolidated dispatch center serving Champaign County for ALL police, fire, and emergency medical service (EMS) response. If you require any type of emergency response, call 911 from a cellular or any landline telephone.

University Police — 217-333-1216

Non-emergency/non-police response number for information on public safety, personal safety, and workplace safety.

Office of Campus Emergency Planning — 217-333-1216

Serves as the focal point for emergency planning and preparedness questions, issues and activities.

Code Compliance and Fire Safety — 217-265-5268

Coordinates fire and life safety programs and the building and fire code compliance functions for the campus.

Facilities and Services — 217-333-0340

Provides maintenance and repair, utility services, construction, engineering, facilities planning and custodial services for University-owned buildings/facilities.

Division of Research Safety — 217-333-2755

Assists campus units in identifying and managing biological, chemical and radiological hazards within the campus environment.

Office of Public Affairs — 217-333-5010

Determines what information to disseminate to the media before, during, and after an emergency. The Office of Public Affairs will determine, at the time of the incident, who within the building is authorized to disseminate information to the media.

BUILDING EMERGENCY ACTION PLAN

Institute for Genomic Biology u1080 / 1206 West Gregory Drive, Urbana IL.

Definitions

Area of Rescue Assistance — An area where people, including those with functional needs, can go to await assistance if they are not able to evacuate or get to another area of safety.

Building Command Post — A physical or virtual Command Post utilized by Building Emergency Management Team members to proactively manage an emergency or disaster.

Building Emergency Action Plan (BEAP) — A document that consists of emergency procedures to help facilitate and organize building occupant actions during an emergency.

Building Evacuation — Action taken to leave an area for personal safety.

Emergency Responders — Individuals specifically trained for emergency response, including police, fire, ambulance, public health and public works personnel.

Evacuation Assembly Area — The location where all evacuees will convene once an order to evacuate is given.

Floor Coordinators — Individuals responsible for assisting with the orderly evacuation or sheltering-in-place of all personnel within their area of responsibility and physically accounting for those individuals once convened at the evacuation assembly area(s).

Functional Needs — The needs of an individual who under usual circumstances is able to function on their own or with support systems. However, during an emergency, their level of independence may be challenged.

Shelter-in-Place — Action taken to seek immediate shelter indoors when emergency conditions do not warrant or allow evacuation.

Storm Refuge Area — Specific locations within University buildings/facilities that provide reasonable protection from severe weather. Not all University buildings/facilities have Storm Refuge Areas.

BUILDING EMERGENCY ACTION PLAN

Institute for Genomic Biology u1080 / 1206 West Gregory Drive, Urbana IL.

Preparedness

Emergency preparedness is ultimately the responsibility of every faculty, staff, student, and visitor at the University of Illinois at Urbana-Champaign. Every occupant of a building should prepare for emergencies and disasters through the following methods:

- Sign up for the campus' emergency messaging system called "Illini-Alert" at: <http://emergency.illinois.edu/>
- Keep an Emergency Response Guide near your workspace. If you do not have one, request one through Office of Campus Emergency Planning (333-1216) or download at: <http://police.illinois.edu/ERG>
- "Like" Illini-Alert - University of Illinois at Urbana-Champaign and University of Illinois Police on Facebook.
- Follow Illini-Alert @IlliniAlert, UIPD @UIPD and Illinois Crime Alert @CrimeAlertIL on Twitter.
- Take the time to visit the Division of Public Safety's website at: <http://police.illinois.edu/> and educate yourself on the resources available to you.
- Make plans and preparations before an incident occurs.
- Use the "buddy system" when planning for emergency response actions.
- Maintain accountability of your personal belongings.
- Keep your work area(s) clean and free of debris and other combustible materials.
- Become familiar with your work area(s) and building. Pay attention to the location of evacuation maps (if available), fire extinguishers, fire alarm pull stations, and other fire and life safety equipment in the building.
- Recognize potential fire hazards and report them immediately.
- Remain aware of your surroundings and immediately call 911 to report suspicious persons or activities.
- Actively participate in safety training, including but not limited to fire extinguisher training, fire evacuation drills, first aid training and self-defense training.
- Annually review the building emergency plan and make recommendations for improvement to your Emergency Management Team Members.
- Create a preparedness kit to keep in or near your workspace. Visit <http://ready.gov/>.

This Building Emergency Action Plan (BEAP) is to be used in conjunction with the Emergency Response Guide (ERG), which provides recommendations for response actions to specific emergency events:

<http://police.illinois.edu/ERG>

Resource List

<http://police.illinois.edu/beap-resources>

BUILDING EMERGENCY ACTION PLAN

Institute for Genomic Biology u1080 / 1206 West Gregory Drive, Urbana IL.

Appendix A — Building Maps

Legend:



Evacuation Assembly Area — The location where all evacuees will convene once an order to evacuate is given.



Exit — Designated route out of the building.



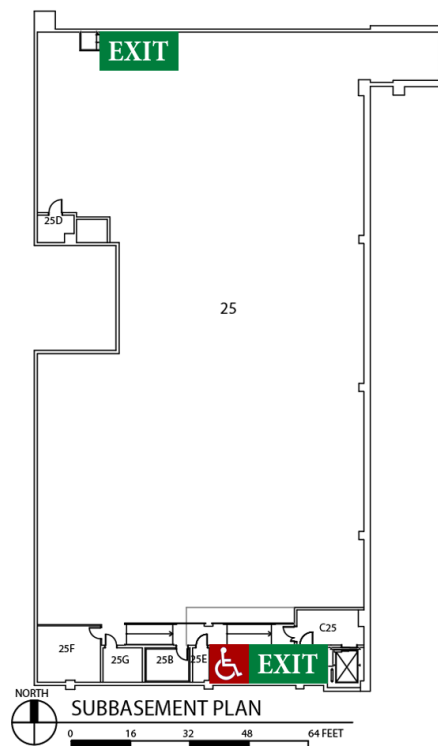
Area of Rescue Assistance — An area where people, including those with functional needs, can go to await assistance if they are not able to evacuate or get to another area of safety.



Storm Refuge Area — Specific locations within University buildings/facilities that provide reasonable protection from severe weather. Not all University buildings/facilities have Storm Refuge Areas.

Evacuation
Assembly

Morrow Plots





Area of Rescue Assistance



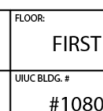
Storm Refuge Area



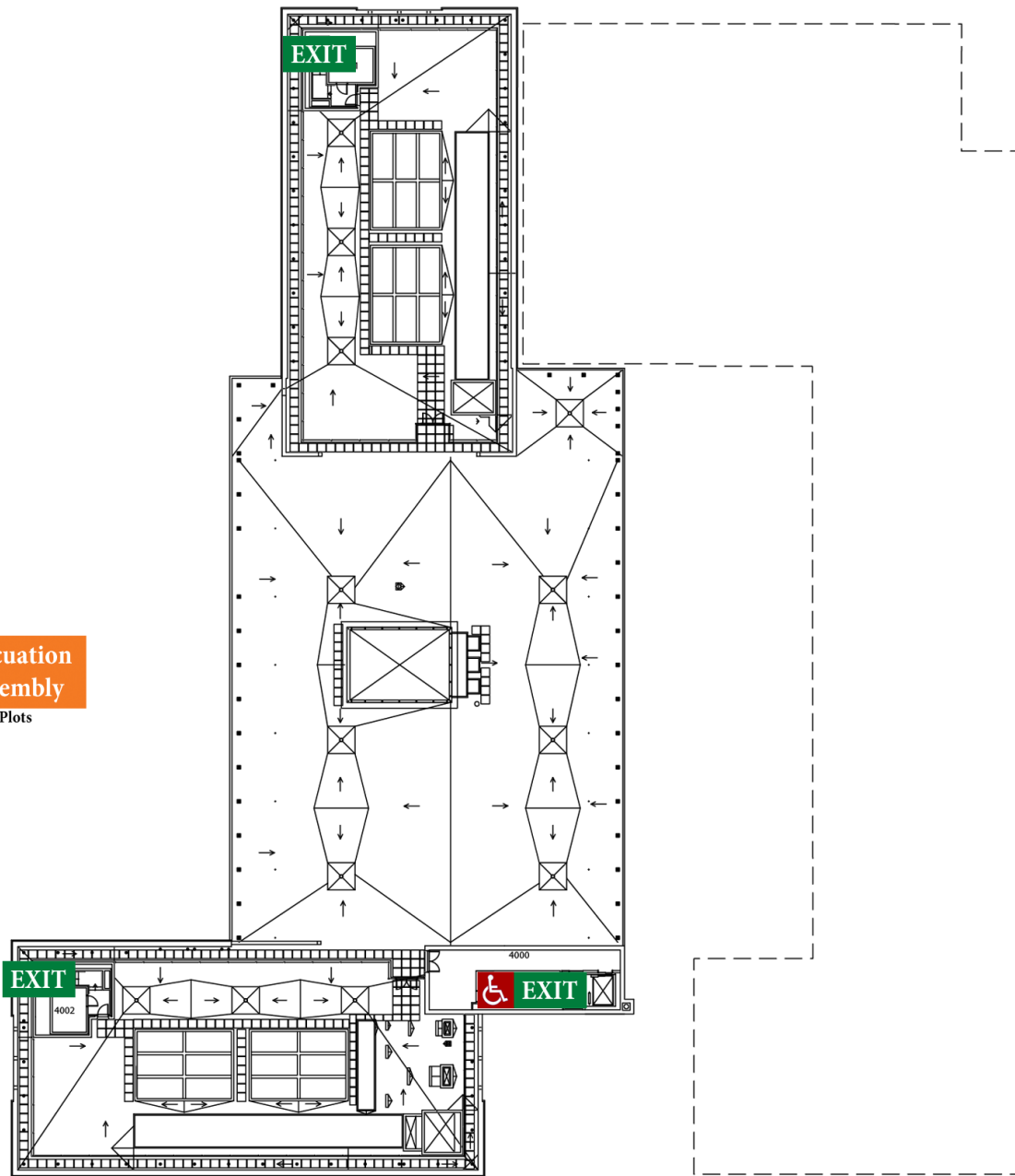
 Area of Rescue Assistance
 Storm Refuge Area





Storm Refuge Area



**Evacuation
Assembly**
Morrow Plots

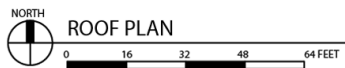
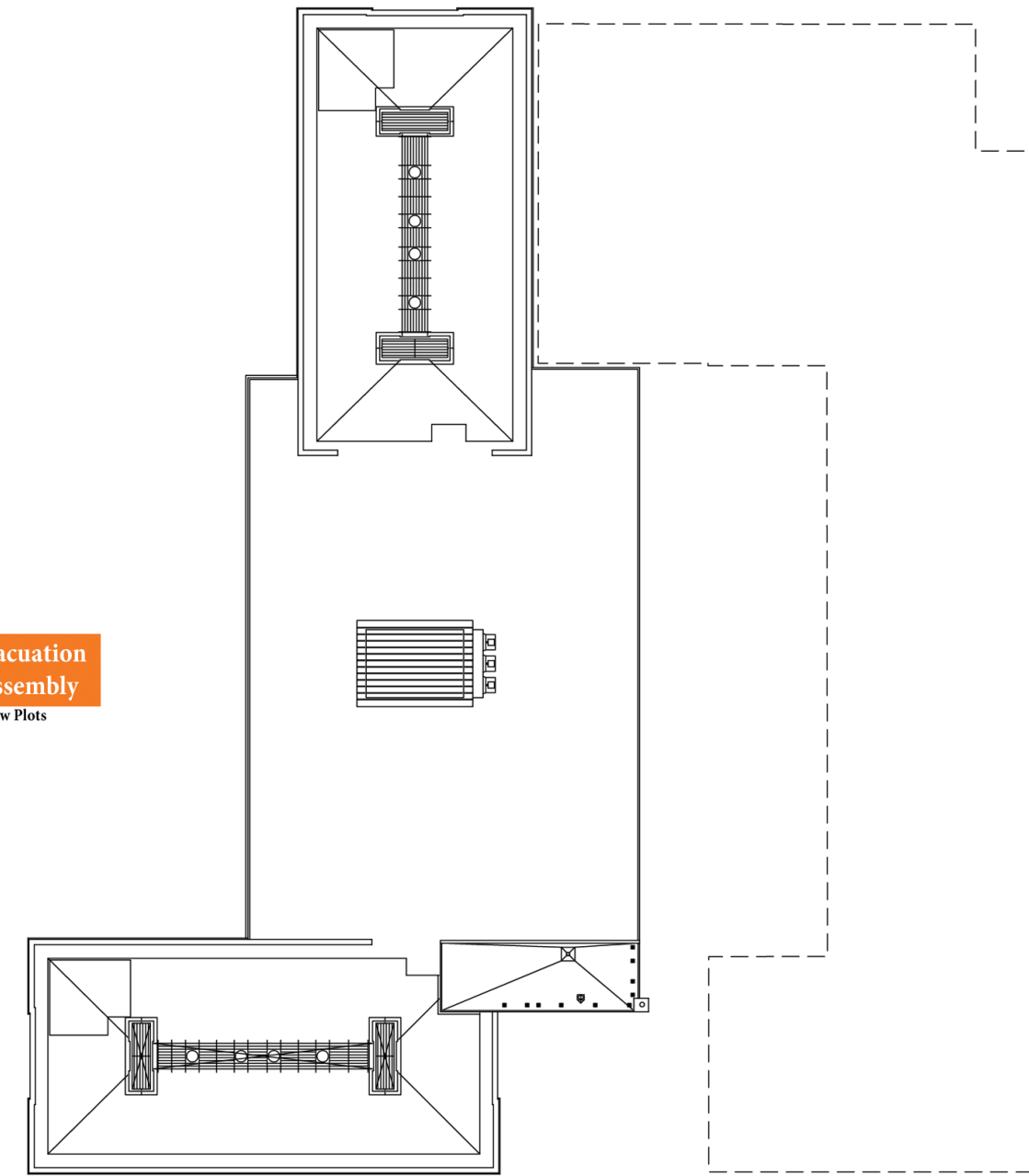


NORTH
FOURTH FLOOR PLAN
0 16 32 48 64 FEET

 Area of Rescue Assistance
 Storm Refuge Area

Evacuation
Assembly

Morrow Plots



Area of Rescue Assistance



Storm Refuge Area

BUILDING EMERGENCY ACTION PLAN

Institute for Genomic Biology u1080 / 1206 West Gregory Drive, Urbana IL.

Appendix B — Employee Evacuation Accountability Form

Carl R. Woese Institute for Genomic Biology

Theme Lists as of 11/30/17

Biosystems Design - Concourse		
Floor Coordinators: Katherine 'Kate' Janssen / Glen Fried		
<i>Persons within Area of Responsibility</i>		<i>Evacuation Sign-Off</i>
Alleyne	Andrew	
Allison	James	
Belmont	Andrew	
Bushell	Colleen	
Chao	Ran	
Chen	Yiziying	
Dunham	Sage	
Goel	Viraat	
Guan	Xudong	
Guo	Fang	
Hamed Rad	Mohammad	
Hu	Sumeng	
Janssen	Kate	
Jiang	Jing	
Jiazhang	Lian	
Jin	Yong-Su	
Ju	Linyang	
Koeberlein	Joyce	
Koh	Kah Oon Augustine	
Li	Jinbei (Walden)	
Lian	Jiazhang	
Liu	Gang Logan	
Liu	Jingjing	
Long	Stephen	
Lu	Ting	
Lu	Yi	
Luo	Shangwen	
Meng	Qingxi	
Milenkovic	Olgicia	
Mishra	Shekhar	
Moore	Jeffrey	
Moose	Steve	

BUILDING EMERGENCY ACTION PLAN

Institute for Genomic Biology u1080 / 1206 West Gregory Drive, Urbana IL.

Ning	Jonathan	
Ort	Donald	
Penner	Elizabeth	
Purwanto	Nathan	
Qamruddin	Umme Salma	
Rao	Christopher	
Ren	Hengqian	
Rivero Valles	Ana	
Rutenbar	Rob	
Saadah	Mariam	
Schroeder	Charles	
Schroeder	Nathan	
Schultz	John	
Schwarz	Gregory	
Sen	Ananya	
Shahid	Hiba	
Si	Tong 'Tony'	
Sinha	Saurabh	
Sligar	Stephen	
South	Paul	
Streyer	William	
Sun Han Chang	Raul	
Sweedler	Jonathan	
Tabatabaei	Seyedkasra	
Tasan	Ipek	
Tian	Qiqi	
Tohidifar	Payman	
Varghese	Jeffrey	
Vigh	Vasundhara	
Weisberg	Scott	
Xiong	Xiong	
Zhai	Cheng-Xiang	
Zhao	Huimin	
Zhou	Yidan	
Computer Network and Resource Group - Concourse		
Floor Coordinators: Dan Davidson, Joyce Koeberlein		
<i>Persons within Area of Responsibility</i>		<i>Evacuation Sign-Off</i>

BUILDING EMERGENCY ACTION PLAN

Institute for Genomic Biology u1080 / 1206 West Gregory Drive, Urbana IL.

Bach	Michael	
Choi	Michael	
Davidson	Dan	
Golz	Angela	
Hendricks	April	
Jukes	Lawrence 'Larry'	
Kim	John	
Koeberlein	Joyce	
Leigh	Joseph	
Sivaguru	Mayandi	
Slater	David	
Sturgeon	T. Ralph 'Tommie'	

Core Facilities - Concourse

Floor Coordinators: Austin Cypersmith

<i>Persons within Area of Responsibility</i>		<i>Evacuation Sign-off</i>
Ahmed	Syeda Tajin	
Akinrotimi	Oludemilade	
An	Linna	
Anapindi	Krishna	
Androwski	Rebecca	
Anorma	Chelsea	
Antonsen	Adrienne	
Arias-Suarez	Sandra Liliana	
Arif	Waqar	
Asad	Nadeem	
Aubery	Rose	
Aydin	Onur	
Baculis	Brian	
Bandara	Sarith	
Bangru	Sushant	
Bao	Yan	
Barajas	Armando	
Barron	Amelia	
Bassett	William	
Bassiri	Maryam	
Batcha	Tamilselvam	
Baumgartner	Ryan	

BUILDING EMERGENCY ACTION PLAN

Institute for Genomic Biology u1080 / 1206 West Gregory Drive, Urbana IL.

Beak	Yousoon	
Berding	Kirsten	
Berg	Ian	
Berger	Elliot	
Bhate	Amruta	
Blackmore	Stephen	
Blavi Josa	Laia	
Bo	Yang	
Boateng	Kingsley	
Braswell	Shaneen	
Breckenridge	Jay	
Buechler	Andrew	
Burke	Martin	
Byrum	Mark	
Byun	Sanwon	
Cai	Kaimin	
Canady	Taylor	
Caputo	Sang Hyun	
Casas	Gloria	
Castaneda	Blanca	
Chaturvedi	Pankas	
Chen	Jinjing	
Chen	Yiru	
Cheng	Kevin	
Chinea Diliz	Monica	
Choi	Woosuk	
Chorghade	Rajeev	
Chu	James	
Cintora	Patricia	
Cioffi	Alexander	
Cole	John	
Collins	Sean	
Comi	Troy	
Cowden	Zachary	
Cruz	Anamaria	
Cyphersmith	Austin	
Dailey	Megan	
Davis	Elizabeth	
Daza	Enrique	
de Flamingh	Alida	
Diao	Yijue	

BUILDING EMERGENCY ACTION PLAN

Institute for Genomic Biology u1080 / 1206 West Gregory Drive, Urbana IL.

Diaz	Katrina	
Dickson	Price	
Doan	Thu	
Dooungkamchan	Kankanit	
Drag	David	
Edwards	Whitney	
Elhebeary	Mohamed	
Erickson	Hanna	
Fan	Anthony	
Feldner	Mary Kate	
Feng	Yiming	
Flatt	Kristen	
Fleming	Stephen	
Forsthoefel	Craig	
Fraebel	David	
Fried	Ella	
Fried	Glenn	
Fritz	Eric	
Funk	Michael	
Fuzawa	Miyu	
Gambacorta	Francesca	
Gancayco	Marc	
Ganguli	Anurup	
Gapinske	Michael	
Geng	Junlong	
Gentile	Stefan	
Gholamalamdari	Omid	
Gilchrist	Aidan	
Go	Yoo Kyung	
Goldberg	Zachary	
Goncalves	Kelley	
Gorman	Brittney	
Gossage	Zachary	
Graybill	Richard	
Graz Arcanjo	Rachel	
Gryka	Mark	
Guan	Xudong	
Gupta	Shravan	
Han	Zhiyuan	
Hanafin	William	
Hanon	Eduwardo	

BUILDING EMERGENCY ACTION PLAN

Institute for Genomic Biology u1080 / 1206 West Gregory Drive, Urbana IL.

Hao	Qinyu	
Harbaugh	Benjamin	
Haselhorst	Derek	
Heller	Nicholas	
Hernandez Saavedra	Diego	
Hill	Adam	
Ho	Sang Hoon	
Holland	Robin	
Huang	Conghui	
Huang	Jennifer	
Hughes	Cris	
Hughes	Jennifer	
Hussain	Jakia	
Hutchinson	Sarahann	
Iftikhar	Hira	
Ilin	Yelena	
Imai	Brian	
Irving	Samuel	
Iyer	Harini	
Iyer	Rajashekar	
Jadaliha	Mahdieh	
Jafarani	Komal	
Jain	Anika	
Jain	Ishita	
James	Noelle	
Janssen	Katherine 'Kate'	
Juda	Michael	
Jung	Paul	
Kabir	Mohammad	
Kang	Jin Gu	
Kang	Minjee	
Kapoor	Iti	
Kaufman	Collin	
Ke	Hanzhong	
Kemp	James	
Khan	Sumbul	
Khatiwada	Sushil	
Kim	Alex	
Kim	Chi Yong	
Kim	Hojun	
Kim	Hyemi	

BUILDING EMERGENCY ACTION PLAN

Institute for Genomic Biology u1080 / 1206 West Gregory Drive, Urbana IL.

Kim	Hyuneil	
Kim	Ik Jung	
Kim	Ji Eun	
Kim	Mijung	
Kim	Sumin	
Kim	Te Joon	
Kim	Young-Chae	
Kisley	Lydia	
Koeberlein	Joyce	
Kong	Wentao	
Kong	Xinyu	
Kriska	Adam	
Kulkoyluoglu	Eylem	
Lahiri	Pratik	
Lai	Kuan-Yu	
Lake	Ryan	
Lau	Gee	
Lauder	Kathryn	
Lawrence	Catherine	
Laws	Mary	
Le	Phuong	
Lee	Jae Hoon	
Lee	Jeongmin	
Lee	Junmin	
Lee	Juyeon	
Lee	Kwan Young	
Lee	Ping	
Lee	Woowon	
Lee	Young Jae	
Lello	Alexis	
Lemonnier	Pauline	
Lesicko	Alexandria	
Leung	See Wai Sherry	
Leyshon	Brian	
Li	Bo	
Li	Hongjie	
Li	Jiang	
Li	Jiankun	
Li	Kuiliang	
Li	Nantao	
Li	Songsong	

BUILDING EMERGENCY ACTION PLAN

Institute for Genomic Biology u1080 / 1206 West Gregory Drive, Urbana IL.

Li	Tianyi	
Li	Xiaohe	
Li	Ye	
Lian	Jiazhang	
Lieu	Dfeau	
Lin	Jingjun	
Lindeman	Cory	
Liu	Tzu-Wen	
Liu	Yang	
Loh	Kang Yong	
Loh	Ryan	
Loman	Brett	
Ma	Lei	
Ma	Liang	
MacDowell Kaswan	Zoe	
Madak-Erdogan	Zeynep	
Madinya	Jason	
Majdak	Petra	
Majumdar	Sayani	
Malhi	Ripan	
Mathai	John	
McCracken	Joselle	
Mei	Wenyan	
Meling	Daryl	
Menel	Ilona	
Miller	Kali	
Milner	Derek	
Mishra	Shekhar	
Misra	Santosh	
Mohagheghian	Erhan	
Moody	Laura	
Munroe	Michael	
Nall	Duncan	
Nelson	Adam	
Neumann	Corryn	
Neumann	Elizabeth	
Nguyen	Julie	
Nielsen	Joshua	
Ning	Jonathon	
Norsworthy	Miles	
O'Gorman	Madelyn	

BUILDING EMERGENCY ACTION PLAN

Institute for Genomic Biology u1080 / 1206 West Gregory Drive, Urbana IL.

Oh	Seung	
Okeefe	Lauren	
Ostadi Moghaddam	Amir	
Osterholz	Zachary	
Owings	Amanda	
Pandey	Neha	
Parikh	Radne	
Park	Jihye	
Park	Jooyeon	
Parker	Coltan	
Paulsmeyer	Michael	
Pei	Ying	
Pentrak	Martin	
Perry	Kimberly	
Petronikolou	Nektaria	
Pino	Nicholas	
Prabhu	Suma	
Qin	Ellen	
Qu	Subing	
Rahil	Zainab	
Raman	Ritu	
Rappleye	Michael	
Ravan	Aniket	
Ray	Allyson	
Reinhardt	Christopher	
Reuter-Carlson	Ursula	
Richardson	Kadeem	
Roberts-Galbraith	Rachel	
Rogers	Mary	
Rogers	Steven	
Romero Valero	Ingrid Carolina	
Roth	Aaron	
Rowland	Elizabeth	
Roy	Edward	
Ryan	Kelly	
Ryder	Emily	
Sakhale	Sandeep	
Salam	Mohammed	
Santa Maria	Anna	
Schlein	Lisa	
Seimetz	Joseph	

BUILDING EMERGENCY ACTION PLAN

Institute for Genomic Biology u1080 / 1206 West Gregory Drive, Urbana IL.

Serafino	Gabrio	
Seward	Christopher	
Sexton	Bethany	
Shaffer	Samantha	
Shah	Tauseef	
Sharif	Momal	
Sharma	Deepa	
Shi	Xueqian	
Shoaib	Tooba	
Shyu	Peter	
Siegel	Marcia	
Sivaguru	Barghav	
Sivaguru	Vignesh	
Sizemore	Courtnei	
Skariah	Geena	
Smith	Lucas	
Solorzano Lowell	Kathryn	
Sonam	Surabhi	
Stella	Stephanie	
Suarez	Yaravi	
Sukenik	Shahar	
Sullivan	Kathryn	
Sun	Hao	
Sung	Jaeuk	
Tegtmeyer	Kyle	
Teo	Jyeng	
Thattai Ragunathan	Preethi Narayani	
Tiwari	Saumya	
Tjioe	Marco	
Todatry	Soorya	
Tripathi	Anupriya	
Tucker	Emily	
Turgeon	Aurora	
Valiya Chembazhi	Ullas	
Valverde	Lawrence	
VanEtten	Kathrine	
Vasquez Bravo	Bernardo	
Vu	Vinh	
Wang	Anqi	
Wang	Hsuan-Chin	
Wang	Kwo-Kwang	

BUILDING EMERGENCY ACTION PLAN

Institute for Genomic Biology u1080 / 1206 West Gregory Drive, Urbana IL.

Wang	Mei	
Wang	Ruibo	
Wang	Yajie	
Wang	Yuqi	
Waterman	David	
White	Audrey	
White	Dalon	
Wolf	Patricia	
Xiong	Mengyi	
Xue	Guanyling	
Xue	Louisa	
Yamamoto	Ami	
Yau	Peter	
Yeager	Ashley	
Yeh	Jason	
Yodh	Jaya	
Yu	Liqun	
Yu	Mia	
Yu	Ya-Chi	
Yu	Jin	
Yun	Eunju	
Yun	Kun	
Zahid	Mohammad	
Zhang	Huiru	
Zhang	Peng	
Zhao	Mengdi	
Zhao	Yuechao	
Zhou	Effie	
Zhou	Kassidy	
Zhou	Weinan	
Zhuo	Yue	
Zong	Xinying	
Energy Biosciences Institute - 1S		
Floor Coordinators: Susan Thomas, Melissa Zindars		
<i>Persons within Area of Responsibility</i>		<i>Evacuation Sign-Off</i>
Altschuler	Mitchell	
Alvarez	Kassandra	

BUILDING EMERGENCY ACTION PLAN

Institute for Genomic Biology u1080 / 1206 West Gregory Drive, Urbana IL.

Ament	Michael	
Barner	Bruce	
Benjamin	Claire	
Bernacchi	Carl	
Bernardi	Rafael	
Bernenbaum	May	
Black	Christopher	
Bollero	German	
Bonfirm Fernandes	Samuel	
Boyd	Ryan	
Camp	Dana	
Cann	Isaac	
Capili	Joshua	
Cavanagh	Amanda	
Cho	Young	
Danao	Mary-Grace	
Daum	Mary	
David	Mark	
DeLucia	Evan	
Dong	Hongxu	
Emerson	Lisa	
Endres	A. Bryan	
Flaherty	David	
Fouke	Bruce	
Geiger	Rachael	
Glowacka	Katarzyna	
Grift	Tony	
Hansen	Alan	
Hauter	Justine	
Henry	Cheyenne	
Jaikumar	Nikhil	
Jang	Timothy	
Jin	Yong-Su	
Kesan	Jay	
Khanna	Madhu	
Kim	Jinha	
Kling	Gary	
Kucera	Katherine	
Lauer	Elsa	
Leakey	Andrew	
Lee	Dokyoung	

BUILDING EMERGENCY ACTION PLAN

Institute for Genomic Biology u1080 / 1206 West Gregory Drive, Urbana IL.

Lii	Rebecca	
Lim	Hayoon	
Long	Stephen	
Ma	Kaili	
Mackie	Roderick	
McGrath	Justin	
Mei	Ran	
Metcalf	William	
Miller	Michael	
Monk	Julia	
Muller Paul	Hans	
Orr	James	
Parng	Jerry	
Passarelli	Veronica	
Pignon	Charles	
Rao	Christopher	
Riley	Alexander	
Rodriguez	Luis	
Sacks	Erik	
Shah	Ashka	
Swaminathan	Kankshita	
Tam	Charles	
Thomas	Susan	
Ting	Kuan Chong	
Vasconcelos Pereira	Gabriel	
Voigt	Tom	
Volland	Alyssa	
Wang	Xiao	
Wilson	Andrew	
Wszalek	Andrew	
Yu	Sungju	
Yun	Eunju	
Zhang	Bosen	
Zhang	Xueqiang	
Zhou	Jiewen	

Genomic Ecology of Global Change - 1N

Floor Coordinators: Jing Dong, Don Ort

BUILDING EMERGENCY ACTION PLAN

Institute for Genomic Biology u1080 / 1206 West Gregory Drive, Urbana IL.

<i>Persons within Area of Responsibility</i>		<i>Evacuation Sign-Off</i>
Ahmed	Haleema	
Ainsworth	Elizabeth	
Allen	Dylan	
Allen	Megan	
Altschuler	Mitchell	
Alvarez	Kassandra	
Ament	Michael	
Anderson	Liana	
Arend	Bernard	
Bailey	Ashton	
Balasubramaniam	Muthukumar	
Banan	Darshi	
Barber	Beau	
Berenbaum	May	
Bernacchi	Carl	
Biell	Matthew	
Black	Christopher	
Bonfirm Fernandes	Samuel	
Boyd	Ryan	
Bridgeland	Aya	
Brumm	Justine	
Burroughs	Charles	
Caetano-Anolles	Gustavo	
Capili	Joshua	
Cavanagh	Amanda	
Chatham	Laura	
Chen	Li-Qing	
Chinchilla	Rachel	
Cho	Young	
Choquette	Nicole	
Chowdhary	Girish	
Clark	Lindsay	
Clough	Steven	
Coffland	Kyle	
Costliow	Zachary	
Curtis	Nicole	
de Souza	Amanda	
DeAtley	Grant	
DeLucia	Evan	
DeLucia	Nicholas	

BUILDING EMERGENCY ACTION PLAN

Institute for Genomic Biology u1080 / 1206 West Gregory Drive, Urbana IL.

Desmond	Sara	
DeVries	Ryan	
Dmitrieva	Anna	
Doden	Greta	
Dong	Jing	
Drag	David	
Dungan	Matthew	
Durstock	Mary	
Dutta	Maya	
Dwyer	Alyssa	
Edquiang	Ron	
Ellis	Erin	
Estes	Jacob	
Farrell	William	
Ferguson	John	
Freyfogle	Luke	
Geiger	Rachael	
Glowacka	Katarzyna	
Gog	Linus	
Gomez-Casanovas	Nuria	
Green	Cory	
Han	Menggiao	
Harbaugh	Benjamin	
Harvey	Christopher	
Heap	Marshall	
Heerah	Sachin	
Henry	Cheyenne	
Hicks	Hunter	
Hirannaiah	Pradeepa	
Huber	Steven C.	
Huh	Young Cheol	
Hutchinson	Sarahann	
Jaikumar	Nikhil	
Jang	Timothy	
Kammala	Aishwarya	
Kannan	Karya	
Kantola	Ilsa	
Karn	Anivash	
Kayacan	Erkan	
Bruno	Rhea	
Kromdijk	Johannes	

BUILDING EMERGENCY ACTION PLAN

Institute for Genomic Biology u1080 / 1206 West Gregory Drive, Urbana IL.

Kucera	Katherine	
Laborg	Melinda	
Lauer	Elsa	
Lauer	Greta	
Leakey	Andrew	
LeBauer	David	
Lemonnier	Pauline	
Li	Zheng	
Liao	Ling-Hsiu	
Lii	Rebecca	
Liu	Helen	
Liu	Yuchen	
Long	Stephen	
Marshall-Colon	Amy	
Masters	Michael	
Mayfield-Jones	Duncan	
McCoy	Scott	
McGrath	Jesse	
McMahon	Aidan	
Meacham	Katherine	
Mies	Timothy	
Miller	Jesse	
Ming	Ray	
Mitchell-Sodipe	Ahrianna	
Moller	Christopher	
Monk	Julia	
Moore	Caitlin	
Moore	Emma	
Moose	Steve	
Mulcrone	Jessica	
Murray	Madison	
Nguyen	Julie	
Orawiec	Maryclaire	
Ort	Donald	
Parng	Jerry	
Parng	Jerry	
Passarelli	Veronica	
Patel	Priya Pravin	
Paul	Rachel	
Paul	Robert	
Pederson	Taylor	

BUILDING EMERGENCY ACTION PLAN

Institute for Genomic Biology u1080 / 1206 West Gregory Drive, Urbana IL.

Pelech	Elena	
Peschel	Joshua	
Pignon	Charles	
Plugmacher	Savanna	
Prinn	Morgan	
Quebedeaux	Jennifer	
Refsland	Tyler	
Riley	Alexander	
Rios Acosta	Lorena	
Roberts	Lucas	
Rohde	Gareth	
Root	Michael	
Rose	Stuart	
Ross	Kathryn	
Ruiz Vera	Ursula	
Sadeque	Ahmed	
Sanchez	Laura	
Schmuker	Peter	
Schuler	Mary	
Schultz	Sarah	
Sedivy	Eric	
Sharma	Nirmal	
Shekar	Rachel	
Shrivastava	Stuti	
Singh	Vijay	
Slattery	Rebecca	
Sorgini	Crystal	
South	Paul	
Studer	Anthony	
Talavera	Kweis	
Tam	Charles	
Tarun	Jeshurun Asher	
Taube	Konrad	
Taylor	Lincoln	
Thathapalli Prakash	Parthiban	
Thomey	Michell	
Thompson	Benjamin	
Twohey	Robert	
Urban	Mike	
Velazquez	Cristian	
Vuppala	Sri Theja	

BUILDING EMERGENCY ACTION PLAN

Institute for Genomic Biology u1080 / 1206 West Gregory Drive, Urbana IL.

Wadlington	Will	
Wang	Yu	
Ware	Haley	
Watan	Homayoun	
Wedow	Jessica	
Wertin	Timothy	
Wolz	Kevin	
Wszalek	Andrew	
Wu	Zhenwei	
Xia	Jingnu	
Xie	Jiayang (Kevin)	
Yang	Liyuan	
Young	Sierra	
Zhang	Guochang	
Xhu	Xuefeng	
Zhu	Xinguang	
Zielinski	Ray	

Microbiome Metabolic Engineering - 1S

Floor Coordinators: Susan Thomas, Melissa Zindars

<i>Persons within Area of Responsibility</i>		<i>Evacuation Sign-Off</i>
Cann	Isaac	
D'Alesandro-Gabazza	Corina	
Degnan	Patrick	
Devendran	Saravanan	
Doden	Heidi	
Donovan	Sharon	
Flaws	Jodi	
Gabazza	Esteban	
George	Lucas	
Jin	Yong-Su	
Jinnah	Anna	
Kim	DongHyun	
Kim	Heejin	
Koropatkin	Nicole	
Lane	Stephan	
Liu	Wen-Tso	
Lu	Ting	

BUILDING EMERGENCY ACTION PLAN

Institute for Genomic Biology u1080 / 1206 West Gregory Drive, Urbana IL.

Ly	Lindsey	
Mackie	Roderick	
Miller	Michael	
Mythen	Sean	
Nair	Satish	
Natof	Tyler	
Phesatcha	Burarat	
Rao	Christopher	
Ridlon	Jason	
Sargeant	Lauren	
Schantz	Susan	
Seo	Seungoh	
Vanderpool	Carin	
Wang	Mei	
Xu	Kewei	
Yu	Sora	
Yudong	Ren	
Yun	Eunju	
Zindars	Melissa	
Ziolkowski	Leah	

Omics Nanotechnology for Cancer Precision Medicine - 1S

Floor Coordinators: Brian Cunningham, Melissa Zindars

<i>Persons within Area of Responsibility</i>		<i>Evacuation Sign-Off</i>
Bashir	Rashid	
Canady	Taylor	
Cunningham	Brian	
Fan	Timothy	
Freeman	Brian	
Kalostra	Auinash	
Madak-Erdogan	Zeynep	
Smith	Andrew	

Genomics of Neural and Behavioral Plasticity - 2N

Floor Coordinators: Huimin Zhang, Amy Ahmed

BUILDING EMERGENCY ACTION PLAN

Institute for Genomic Biology u1080 / 1206 West Gregory Drive, Urbana IL.

<i>Persons within Area of Responsibility</i>		<i>Evacuation Sign-Off</i>
Ahmed	Amy	
Astrauskaite	Ieva	
Barbey	Aron	
Beach	Nathan	
Bell	Alison	
Bensky	Miles	
Berenbaum	May	
Beshers	Samuel	
Bransley	Sarah	
Bukhari	Syed Abbas	
Bushell	Colleen	
Ceman	Stephanie	
Chen	Chih-Ying	
Chen	Jie	
Chen	Zhenqing	
Cheng	Qian	
Cho	Hyun Duk	
Chung	Stephanie	
Clayton	David	
Cullum	Jeannette	
Cundiff	Letitia 'Tish'	
Dar	Roy David	
Epstein	Milt	
Falk	Justin	
Fields	Christopher	
Fine	Julia	
Fuller	Rebecca	
Gernat	Tim	
Gillette	Martha	
Gillette	Rhanor	
Goldenfeld	Nigel	
Gonzalez	Rachel	
Gulley	Joshua	
Guo	Wei	
Hadley	Edwin	
Hamilton	Adam	
Han	Jiawei	
Herb	Brian	
Huang	Zachary	
Hudson	Matthew	

BUILDING EMERGENCY ACTION PLAN

Institute for Genomic Biology u1080 / 1206 West Gregory Drive, Urbana IL.

Hug	Barbara	
Jackson	Kari	
Jakobsson	Eric	
James	Noelle	
Jones	Beryl	
Kalsotra	Auinash	
Kao	Wei-Chun	
Khan	Safa	
Kukekova	Anna	
Kumar	Shalini	
Lee	Seeon	
Li	Xin	
Li	Yuetian	
Liao	Ling-Hsiu	
Liao	Ling-Hsiu	
Liu	Siyuan	
Luu	Sydney	
Mainzer	Liudmila	
Mendenhall	Ruby	
Mendenhall	Ruby	
Milenkovic	Olgica	
Milenkovic	Olgica	
Mizzen	Craig	
Morris	Timothy	
Negi	Soumya	
Nekkalapudi	Anurag	
Nguyen	Anh	
Norsworthy	Miles	
Pohlman	Alexander	
Ray	Allyson	
Reynolds	Kurt	
Rhodes	Justin	
Rizal	Pramod	
Roberts	Brent	
Robertson	Hugh	
Roca	Alfred	
Rodriguez-Zas	Sandra	
Sankey	Alison	
Sanz	Lucas	
Saul	Michael	
Seimetz	Joseph	

BUILDING EMERGENCY ACTION PLAN

Institute for Genomic Biology u1080 / 1206 West Gregory Drive, Urbana IL.

Seward	Christopher	
Seyller	Madilyn	
Shah	Sunny	
Shpigler	Hagai	
Sinha	Saurabh	
Sirasao	Rahul	
Sloofman	Laura	
Solomon	Lacey	
Srinivasan	Subhashini	
Stuart	Sarai	
Stubbs	Lisa	
Suarez	Andrew	
Traniello	Ian	
Troy	Joseph	
Vaughan	Jackson	
Vilker	Jacob	
Walden	Kim	
Wang	Yanyan	
Whitworth	Josh	
Yang	Che	
Yoo	Jaeeun	
Zadeh	Jenny	
Zhang	Huimin	
Zhao	Sihai 'Dave'	
Zhong	Sheng	

HPCBio - 2N

Floor Coordinators: Mikel Hernaez

<i>Persons within Area of Responsibility</i>		<i>Evacuation Sign-Off</i>
Fields	Christopher	
Hernaez	Mikel	
Jongeneel	Victor	
Kirkpatrick	Jessica	
Maggio	Tyler	
Rendon	Gloria	
Tseng	Meng-Chun	
Zadeh	Jenny	

BUILDING EMERGENCY ACTION PLAN

Institute for Genomic Biology u1080 / 1206 West Gregory Drive, Urbana IL.

Anticancer Discovery from Pets to People - 2S		
Floor Coordinators: Elizabeth Penner, Nikki Gentry		
<i>Persons within Area of Responsibility</i>		<i>Evacuation Sign-off</i>
Berry	Blake	
Berry	Matthew	
Boudreau	Matthew	
Brooks	Sterling	
Drown	Bryon	
Fan	Timothy	
Finnegan	Alex	
Gentry	Nicole 'Nikki'	
Hafeman	Michael	
Hejna	Miroslav	
Hergenrother	Paul	
Hu	Jin	
Huang	Meng-Yao	
Jin	Hu	
Kihshen	Hermon	
Kim	Yeongsung	
Kranz	David	
Lee	Hyang Yeon	
Leistico	Jacob	
Liu	Jiaxin	
Luu	Alan	
Manjunath	Mohith	
Montgomery	William	
Moon	Wooyoung	
Nguyen	Viviana	
Penner	Elizabeth 'Beth'	
Perez-Pinera	Pablo	
Rao	Pranav	
Selling	Jason	
Shumskiy	Artemy	
Song	Jun	
Spencer	Susan	
Spinella	Michael	
Talbot	Joseph	
Yan	Jialu	

BUILDING EMERGENCY ACTION PLAN

Institute for Genomic Biology u1080 / 1206 West Gregory Drive, Urbana IL.

Yeo	Steve	
Zhang	Yi	
Zhao	Chenchao	
Regenerative Biology and Tissue Engineering - 2S		
Floor Coordinators: Elizabeth Penner, Derek Milner		
<i>Persons within Area of Responsibility</i>		<i>Evacuation Sign-Off</i>
Ballance	William	
Barnhouse	Victoria	
Bashir	Rashad	
Berent	Zachary	
Berger	Elliot	
Blazek	Audrey	
Boppart	Marni	
Boppart	Stephen	
Boyce	Amber	
Breen	Elizabeth	
Bruce	Elena	
Cameron	Jo Ann	
Chait	Hannah	
Chang	Jonathan	
Chang	Li-Hsin	
Chen	Jee-Wei (Emily)	
Chen	Kenneth	
Cheng	Jianjun	
Choo	Janice	
Cruz	Denzel Ryan	
Dailey	Megan	
Dewey	Marley	
Emmons	Russell	
Gaskins	H. Rex	
Gentry	Nicole 'Nikki'	
Gilchrist	Aidan	
Goldwasser	Michael	
Gray	Emma	
Green	Glenn	
Harley	Brendan	
Henry	Jonathan	

BUILDING EMERGENCY ACTION PLAN

Institute for Genomic Biology u1080 / 1206 West Gregory Drive, Urbana IL.

Herzog	Kalyn	
Hollister	Scott	
Hunter	Christine	
Imoukhuede	Princess	
Jasiuk	Iwona	
Johnson	Eileen	
Johnson	Samantha	
Karvelis	Elijah	
Kenis	Paul	
Kilian	Kristopher	
Kim	Joyeon	
Kim	Kyekyoon Kevin	
Ko	Eunkyung (Clare)	
Kolossov	Vladimir	
Kong	Hyun Joon	
Kong	Xinyu	
LaHood	Allison	
Leary	Sarah	
Leckband	Deborah	
Leong Jiayu	Eunice	
Leslie	Matthew	
Li	Patricia	
Li	Yanfen	
Lopez	Nicole	
Luby	Katherine	
Lumibao	Jan	
Malhi	Ripan	
Melhem	Molly	
Meyer	Jordan	
Milner	Derek	
Moy	Ashley	
Ngo	Mai	
Ngoh	Kimberly Wei Kim	
Nguyen	Kathy	
Niemiro	Grace	
Park	Jooyeon	
Pedron-Haba	Sara	
Penner	Elizabeth	
Piekos	Jacqueline	
Polkoff	Kathryn	
Qin	Ellen	

BUILDING EMERGENCY ACTION PLAN

Institute for Genomic Biology u1080 / 1206 West Gregory Drive, Urbana IL.

Rao	Christopher	
Rich	Max	
Roberts-Galbraith	Rachel	
Roderick-Buescher	Lillian Faye	
Ruiz	Alejandra	
Rund	Laurie	
Schook	Lawrence	
Schroeder	Kirsten	
Seo	Yongbeom	
Sinclair	Whitney	
Sivaguru	Vignesh	
Smith-Bolton	Rachel	
Stewart	Matthew	
Stocum	David	
Stutchman	Jeremy	
Tank	Courtney	
Tate	Vivian	
Teo	Jyeyng	
Thiel	Elijah	
Underhill	Gregory	
Wagoner Johnson	Amy	
Wang	Ning	
Wei	Jie	
Wheeler	Matthew	
Wiley	Evan	
Wolf	Patricia	
Wolter	Gabrielle	
Womack	Sarah	
Yu	Seungjung	
Yu	Yijiang	
Zambuto	Samantha	
Zhang	Huiru	
Zhang	Yang	
Zhong	David	
Biocomplexity - 3N		
Floor Coordinators: Mindy Baughman, Connie Scott		
<i>Persons within Area of Responsibility</i>		<i>Evacuation Sign-Off</i>

BUILDING EMERGENCY ACTION PLAN

Institute for Genomic Biology u1080 / 1206 West Gregory Drive, Urbana IL.

Asangba	Abigail	
Barelli	Claudia	
Baughman	Melinda 'Mindy'	
Bhogale	Shounak Girish	
Branscomb	Elbert	
Cann	Isaac	
Casagrande	Mary	
Chatterjee	Purba	
Choi	Sang Hyun	
Cossu	Matteo	
Crooks	Taylor	
Crowder	Molly	
Cyberski	Thomas	
Dahmen	Karin	
DeMuro	Joseph	
Deng	Jinzi	
DeVille	Robert (Lee)	
Deviprasad Rao	Vikyath	
DeWerff	Samantha	
Do	Jimmy	
Dubinkina	Veronika	
Eldes	Fatima	
Farris	Jacob	
Ford	Alexandra	
Fouke	Bruce	
Fried	Ella	
George	Lucas	
Goldenfeld	Nigel	
Golonzka	Gita	
Goyal	Akshit	
Hallett	Emily	
Haun-Slowik	Kylie	
Heffernan	Matthew	
Kim	Ted	
Kuehn	Seppe	
Kuhlman	Thomas	
Li	Yuan	
Liu	Wen-Tso	
Liu	Zhiru	
Lu	Ting	
Luthey-Schulten	Zaida	

BUILDING EMERGENCY ACTION PLAN

Institute for Genomic Biology u1080 / 1206 West Gregory Drive, Urbana IL.

Mackie	Roderick	
Martini	K. Michael	
Maslov	Sergei	
Mayfield-Jones	Duncan	
Mittenthal	Jay	
Murray	Nicole	
Nair	Satish	
Nayak	Dipti	
Nemeh	Alexander	
O'Dwyer	James	
Olsen	Gary	
Paddock	Lauren	
Pandey	Partha Pratim	
Parilla	John	
Patel	Akash	
Pauly	Matthew	
Phillips	Alex	
Polidore	Alexander	
Ringwald	Kenneth	
Rowland	Elizabeth	
Sanchez-Nieves	Ruben	
Sanford	Robert	
Saw	Jessica	
Scott	Connie	
Shao	Hongbo	
Shechtman	Lauren	
Shih	Hong-Yan	
Stapelfeldt	Anna	
Stumpf	Rebecca	
Taluja	Serina	
Tegtmeyer	Kyle	
Teodoro	Faith Theresa	
Todorov	Lauren	
Totura	William	
Walia	Noopur	
Warnow	Tandy	
Werth	Charles	
Whitaker	Rachel	
White	Bryan	
Willis	Alexander	
Wilson	Elena	

BUILDING EMERGENCY ACTION PLAN

Institute for Genomic Biology u1080 / 1206 West Gregory Drive, Urbana IL.

Wipfler	Rebecca	
Xue	Chi	
Zhang	Changyi	
Zhu	Minhui	

Computing Genomes for Reproductive Health - 3N

Floor Coordinator: Amy Weckle

<i>Persons within Area of Responsibility</i>		<i>Evacuation Sign-Off</i>
Allan	Brian F.	
Armstrong	Don	
Athreya	Arjun	
Bagchi	Indrani	
Bodnariuc	Jonathan	
Brinkworth	Jessica	
Bucknor	Brianna	
Bustamante	Angela	
Catchen	Julian	
Chan	Christine	
Clark	KaSandria	
Degnan	Patrick	
Dong	Shengkun	
Eagleman	Daphne	
Ge	Xiyu	
Goldenfeld	Nigel	
Gundling	William	
Huang	Conghui	
Hudson	Mathew	
Iromini	Ajoke	
Iyer	Chitra	
Iyer	Ravishankar K.	
Javadi	Ramonasadat Haji Seyed	
Jongeneel	Victor	
Karhanis	Priya	
Kim	Grace	
Ko	CheMyong 'Jay'	
Lamar	Benjamin	
Li	Xinyi	
Mainzer	Liudmila	

BUILDING EMERGENCY ACTION PLAN

Institute for Genomic Biology u1080 / 1206 West Gregory Drive, Urbana IL.

Malhi	Ripan	
Malik	Martin	
Matt	Stephanie	
Mendenhall	Ruby	
Murray	Nicole	
Nelson	Erik	
Nowak	Romana	
Nguyen	ThanHuong 'Helen'	
Ochoa-Alvarez	Idioa	
Pantham	Priyadarshini	
Pfeiffer	John	
Qu	Peiyong 'Annie'	
Quicksall	Zachary	
Raj	Aishwarya	
Raybarman	Adrika	
Ridlon	Jason	
Roca	Alfred	
Rogers	Mary	
Rudahindwa	Susan	
Saw	Jessica	
Schatz	Bruce	
Sen	Anushna	
Shisler	Joanna	
Sneed	Loni	
Sobhy	Myrna	
Song	Yunshu	
Stumpf	Rebecca	
Uddin	Eva MONICA	
Upreti	Sital	
Valero Quiros	Maria Carmen	
Valizadegan	Negin	
Warnow	Tandy	
Weckle	Amy	
Welge	Michael	
White	Bryan	
Wildman	Derek	
Willis	Alexander	
Yarlagadda	Karthik	
Zhu	Ruoqing	
Roca	Alfred	
Malhi	Ripan	

BUILDING EMERGENCY ACTION PLAN

Institute for Genomic Biology u1080 / 1206 West Gregory Drive, Urbana IL.

Saw	Jessica	
Bushell	Colleen	
Hudson	Matthew	
Zhao	Sihai (Dave)	

Infection Genomics for One Health - 3S

Floor Coordinators: Rachel Whitaker, Susan Flanegin

<i>Persons within Area of Responsibility</i>		<i>Evacuation Sign-Off</i>
Aldridge	Brian	
Berenbaum	May	
Brooke	Christopher	
Caceres	Carla	
Chandra Shekhar	Jayadevi	
Degnan	Patrick	
Flanegin	Susan	
Hallett	Emily	
Hansen	Allison	
Heath	Katy	
Lowe	James	
Men	Yujie	
Murray	Nicole	
Nguyen	ThanHuong (Helen)	
Paddock	Lauren	
Rapti	Zoi	
Shisler	Joanna	
Smith	Rebecca	
Vera	Juan	
Warnow	Tandy	
Whitaker	Rachel	

Mining Microbial Genomes for Novel Antibiotics - 3S

Floor Coordinator: Hyoung Sook Ann

<i>Persons within Area of Responsibility</i>		<i>Evacuation Sign-Off</i>
Andersen	Harvey	
Ann	Hyoung Sook	

BUILDING EMERGENCY ACTION PLAN

Institute for Genomic Biology u1080 / 1206 West Gregory Drive, Urbana IL.

Au	Joshua	
Blair	Patricia	
Blassick	Caroline	
Bothwell	Ian	
Chatkewitz	Lindsay	
Chekan	Jonathan	
Choe	Kisurb	
Ciszek	Natalia	
Cogan	Dillon	
Cronan	John	
Dama	Alexander	
DiCaprio	Adam	
Dong	Shi-Hui	
Dutta	Debapriya	
Espejo	Kyle	
Firouzbakht	Arash	
Flanegin	Susan	
Georgiou	Matthew	
Gerlt	John	
Gernat	Tim	
Goettge	Michelle	
Guo	Xiao Rui	
Harris	Lonnie	
Hills-Rieck	Preston	
Howe	Graeme	
Hudson	Graham	
Jensen	Paul	
Jijakli	Kenan	
John	Nalin	
Kakkar	Nedhi	
Kehl-Fie	Thomas	
Kemball	Jeremy	
Khurana	Sanskriti	
Kim	Ye Wool	
Kim	Yery	
Lai	Kuan-Yu	
Liu	Andi	
Luo	Shangwen	
Mahanta	Nilkamal	
McLaughlin	Martin	
Metcalf	William	

BUILDING EMERGENCY ACTION PLAN

Institute for Genomic Biology u1080 / 1206 West Gregory Drive, Urbana IL.

Mitchell	Douglas	
Mokhtari	Tahere	
Nair	Satish	
Oberg	Nils	
Parkinson	Elizabeth	
Peabody	Hannah	
Petronikolou	Nektaria	
Pradhan	Dikshant	
Precord	Timothy	
Rahman	Imran	
Ren	Hengqian	
Rex	Audrey	
Sales	Mia	
Schwalen	Christopher	
Shelton	Kyle	
Simon	Max	
Srinivas	Swaminath	
Stack	Tyler	
Storm	Audra	
Storm	Bradley	
Sweedler	Jonathan	
Tan	Yang	
Tang	Matthew	
Ting	Chi	
Ulrich	Emily	
Valero Quiros	Maria Carmen	
van der Donk	Wilfred	
Wang	Bin	
Wang	Kwo-Kwang (Abraham)	
Weigle	Austin	
Wilson	Brenda	
Wu	Brent	
Wyllie	Ryan	
Yoo	Gina	
Zallot	Remi	
Zhang	Xinshuai	
Zhang	Zhengan	
Zhao	Huimin	
Zhao	Xi Ling	
Zhukovsky	Sara	

BUILDING EMERGENCY ACTION PLAN

Institute for Genomic Biology u1080 / 1206 West Gregory Drive, Urbana IL.

GATEHOUSE		
Floor Coordinators: Jesse Southern, Bob Mann		
<i>Persons within Area of Responsibility</i>		<i>Evacuation Sign-Off</i>
Alexander	Bobby	
Ash	Donelle	
Ashikyan	Christine	
Biggers	Jordan	
Billbrey	Rochelle	
Campbell	Paul	
Castor	Mark	
Cross	Joseph	
Dibert	Noah	
Edmonson	Darci	
Engelking	Kristina	
Fenlon	Courtney	
Fonner	Kierra	
Gentry	Janessa	
Gulley	Adrienne	
Horton	Gabriel	
Huckstep	Madison	
Humphrey	Jack	
Johnson	Kim	
Johnston	Dale	
Kanfer	Alaina	
King	Jacinda	
Lee	Mirhee	
Leistner	Malissa	
Lipking	Rhonda	
Lipsey	Dale	
Louer	Erin	
Lutz	Claudia	
Mann	Bob	
McLain	Lori	
Mikel	Mark	
Millage	Kathy	
Miller	Chris	
Moton	Cameron	
Nickell	Jillian	
Quirk	Jennifer	

BUILDING EMERGENCY ACTION PLAN

Institute for Genomic Biology u1080 / 1206 West Gregory Drive, Urbana IL.

Rew	Michelle	
Robinson	Gene	
Rubio	Jessica	
Ryerson	Daniel	
Scott	Emily	
Southern	Jesse	
Spinks	Carlos	
Stadler	Nina	
Story	Justine	
Vasi	Nicholas	
Weaver	Janis	
Wright	Darren	

BUILDING EMERGENCY ACTION PLAN

Institute for Genomic Biology u1080 / 1206 West Gregory Drive, Urbana IL.

Appendix C — Building Shutdown

OSHA Standard 1910.38(c)(3)

Procedures to be followed by employees who remain to operate critical plant operations before they evacuate;

Employees who may remain to shut down critical operations before evacuating

Certain equipment and processes must be shut down in stages or over time. In other instances it is not possible or practical for equipment or certain process to be shut down under certain emergency situations. This condition, which is not unusual for certain large manufacturers operating complex processes, is not typical of small enterprises that normally can turn off equipment or utilities if necessary and evacuate. However some small enterprises may require designated employees remain behind briefly to operate fire extinguishers or shut down gas and/or electrical systems and other special equipment that could be damaged if left operating or create additional hazards to emergency responders (such as releasing hazardous materials).

Each employer must review their operation and determine whether total and immediate evacuation is possible for various types of emergencies. The preferred approach, and the one most often taken by small enterprises, is immediate evacuation of all their employees when the evacuation alarm is sounded.

If any employees will stay behind, the plan must describe in detail the procedures to be followed by these employees. All employees remaining behind must be capable of recognizing when to abandon the operation or task and evacuate themselves before their egress path is blocked. In small establishments it is common to include in your plan locations where utilities (such as electrical and gas) can be shut down for all or part of the facility either by your own employees or by emergency response personnel.

Staff Required for Shutdown during Evacuation

Name	Office Phone	Cell	Critical Actions Required
N/A			