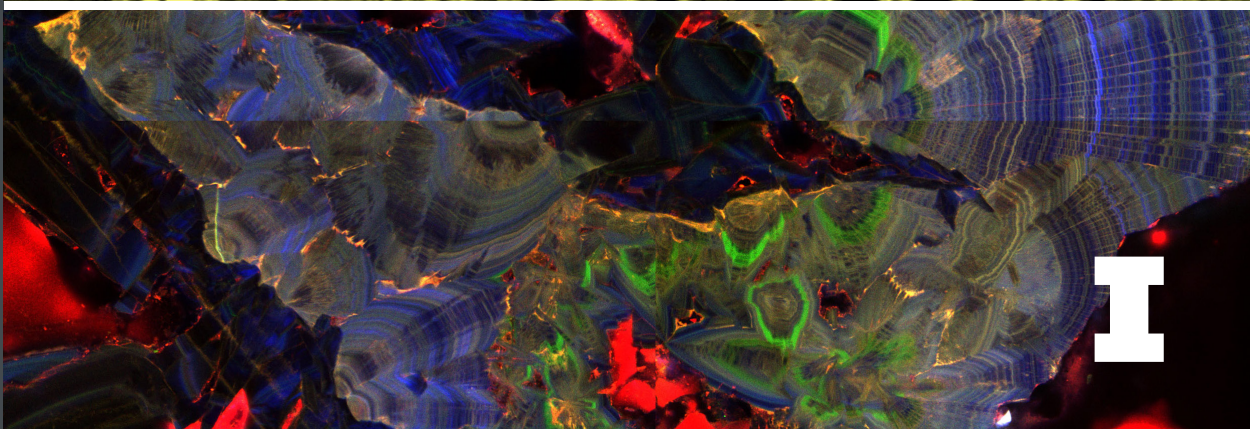
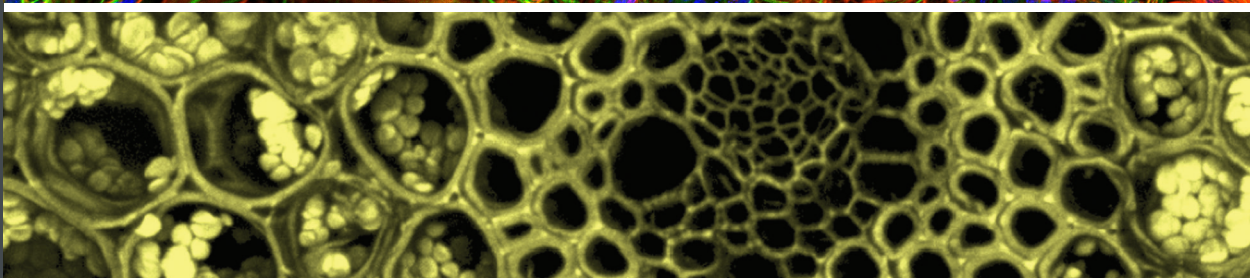
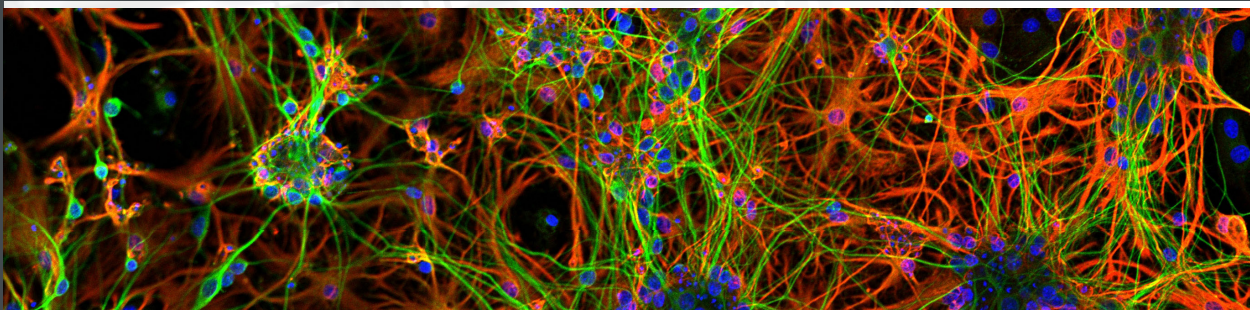


CORE FACILITIES

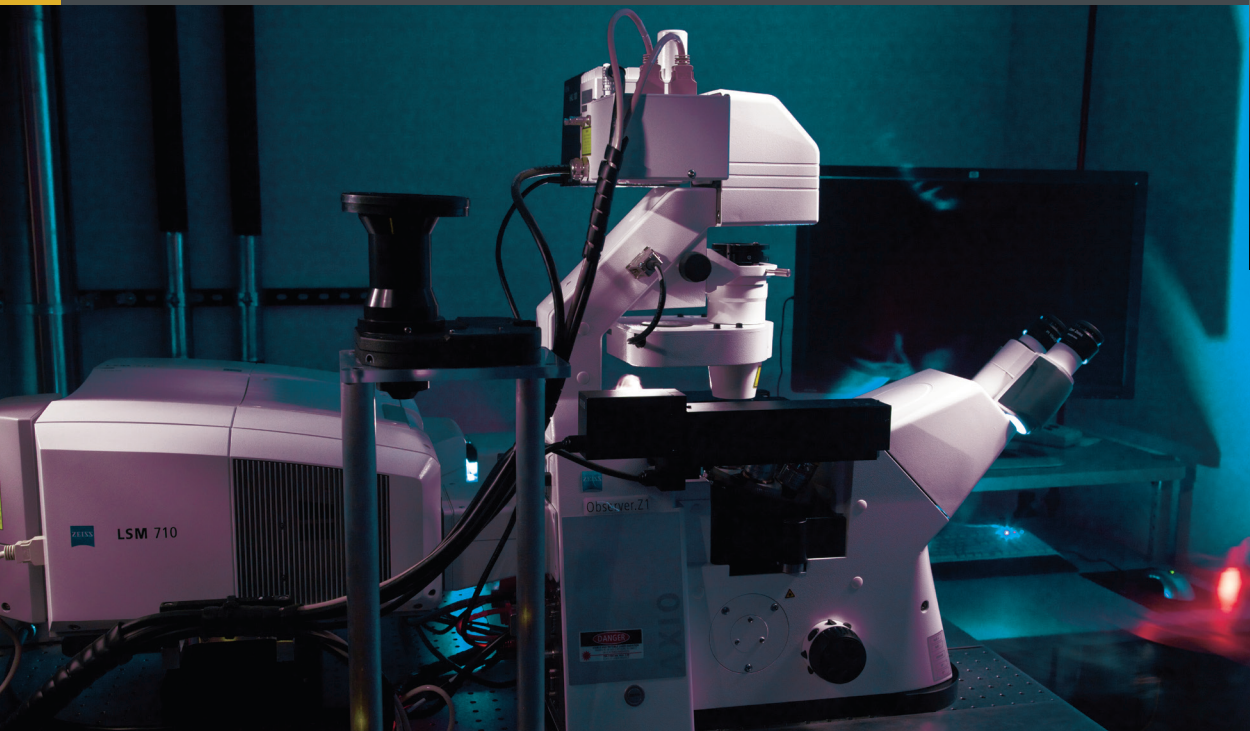
CARL R. WOESE INSTITUTE FOR GENOMIC BIOLOGY

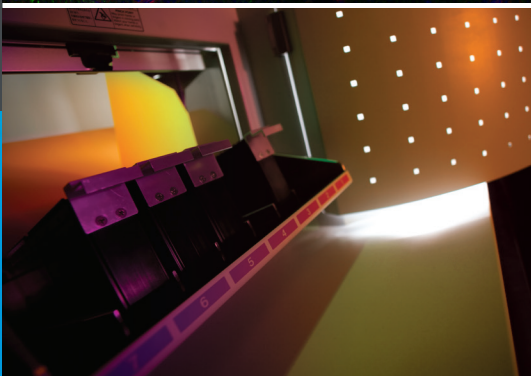
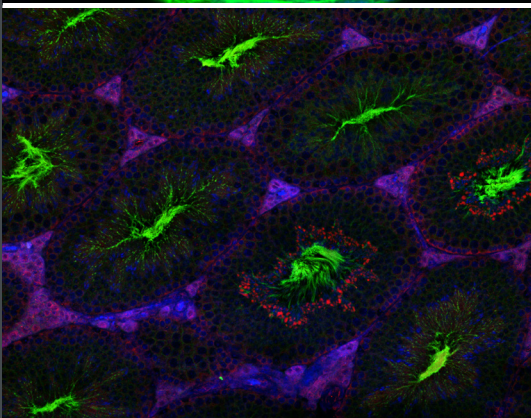
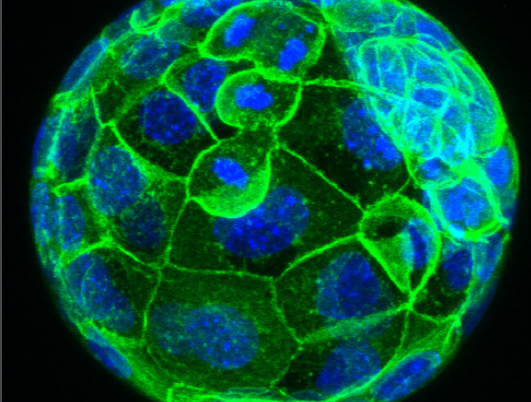


Core Facilities at the IGB is your resource for Light Microscopy, Image Analysis, and Analytical Instrumentation. Our facility provides both step-by-step instruction and in-depth training, allowing researchers to acquire new techniques quickly. With 24/7 access for both IGB researchers and the campus community, IGB Core Facilities can be viewed as an extension of your lab. Our facility is meant to encourage innovation—try new techniques and approaches to achieve your research goals without a significant investment in instrumentation or time. The Core Facilities is a ZEISS Labs@location partner, enabling us to provide both beta instrumentation and advance training to the campus.

WE OFFER:

- ❖ High-end equipment
- ❖ User training
- ❖ Ongoing support, including experiment design and data interpretation
- ❖ Twenty-four hour access





More info at: www.igb.illinois.edu/corefacilities

OPTICAL MICROSCOPY

Light Sheet Microscope: Zeiss Lightsheet Z.1

Structured Illumination Microscope: Zeiss Elyra S1

Super Resolution Confocal: Zeiss LSM 880

Multiphoton Confocal: Zeiss LSM 710

Confocal: Zeiss LSM 700

Fluorescence: Zeiss Axio Observer Z1 with Apotome

Slide Scanner: Hamamatsu Nanozoomer,
Zeiss Axio Scan.Z1 with Fluorescence

Laser Capture: Veritas

Dissecting Scope: Zeiss Stereolumar V12, Zeiss AxioZoom V16

Imaging Cytometer: iCyte

ELECTRON MICROSCOPY

Serial Block Face SEM: Zeiss Sigma VP 3View

ATOMIC FORCE MICROSCOPE

AFM: Asylum Cypher

SAMPLE PROCESSING

Cryostat: Leica CM3050

Embedding Station: Leica EG1150 C and EG1150 H

Microtome: Leica RM2255

Clearing: X-CLARITY

ANALYTICAL

Gel Imager: LAS 4000

SOFTWARE

3D Reconstruction: Imaris, Analyze 3D, Amira-Avizo

Deconvolution: AutoQuant, Zen Desk

2D Image Analysis: Axiovision, Zen Desk

3D PRINTING

3D Printer: Formlabs Form 2

CAMERAS

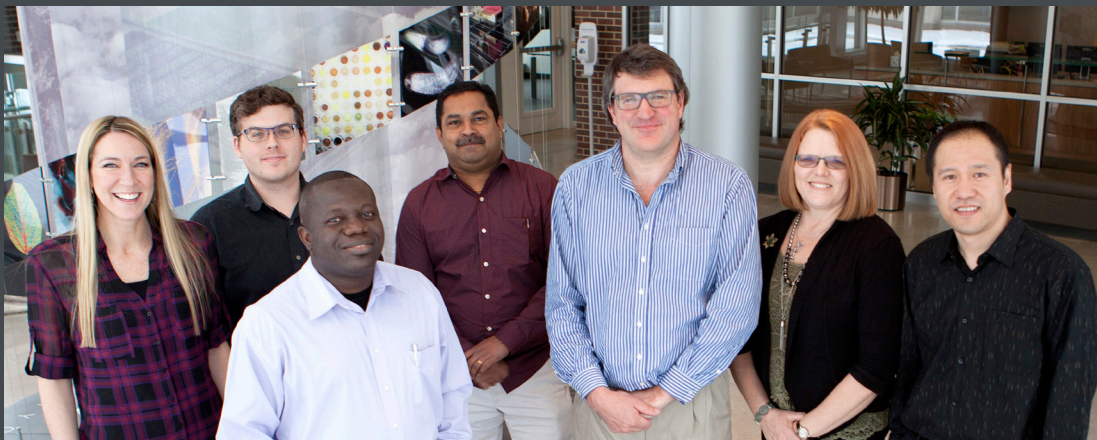
Digital SLR: Canon EOS SD MarkII

Light Kit and Backdrop

Macro Lens: Canon 65 mm f 2.8

NMR

NMR: Agilent 600MHz



CORE FACILITIES STAFF

www.igb.illinois.edu/corefacilities

Pictured from left to right:

Katherine Janssen, MS
Laboratory Research Manager
kjans01s@illinois.edu
217.300.5904

Austin Cyphersmith, PhD
Sr. Research Specialist
ajcypher@illinois.edu
217.244.9654

Kingsley Boateng, PhD
Sr. Research Specialist
kboateng@illinois.edu
217.300.1642

Mayandi (Shiv) Sivaguru, PhD, PhD
Associate Director
sivaguru@illinois.edu
217.333.1214

Glenn Fried, PhD
Director
gfried@illinois.edu
217.333.4328

Joyce Koeberlein
Administrative Support
joyce2@illinois.edu
217.244.0340

Xudong Guan, PhD
NMR Specialist
xdguan@illinois.edu
217.244.2114



1206 West Gregory Drive
Urbana, Illinois 61801
www.igb.illinois.edu

19.005 v2