

Halobacterium salinarum

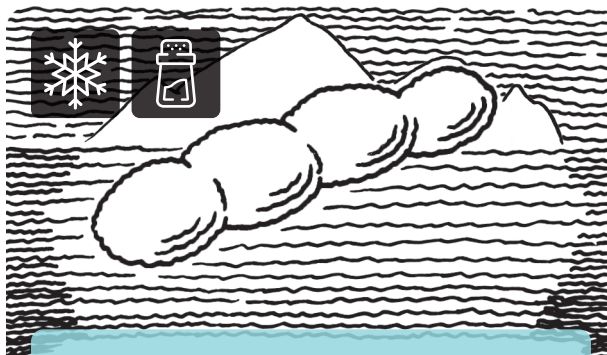
"Pink bug that loves salt"

Who am I?

An Archaeon

Where do I live?

Salty lakes around the world, including Great Salt Lake, Utah.



Psychrobacter arcticus

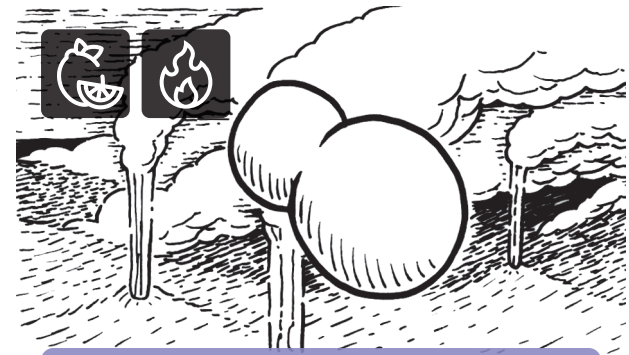
"Cold bug from the poles"

Who am I?

A Bacterium

Where do I live?

Very cold places, including permanently frozen soil and pockets of salt water trapped in sea ice.



Picrophilus torridus

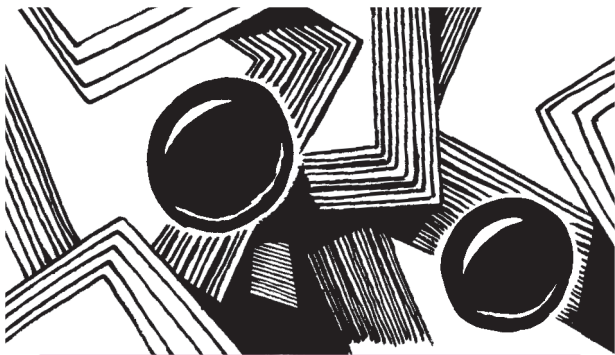
"Burning paint"

Who am I?

An Archaeon

Where do I live?

Acidic environments, including hot springs and volcanic steam vents.



Halobacterium salinarum

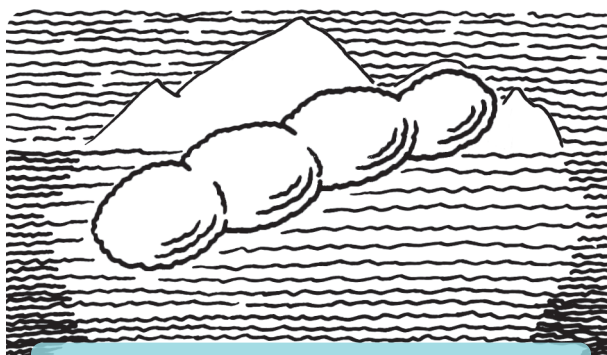
"Pink bug that loves salt"

What challenges can I survive?

Lack of water, temperature extremes, high salt, radiation, toxic chemicals.

Special Talents

Halophile. I can grow in extremely salty water, 10 times saltier than the ocean.



Psychrobacter arcticus

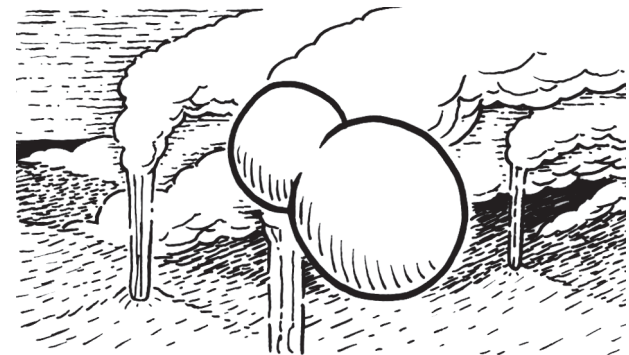
"Cold bug from the poles"

What challenges can I survive?

Cold, darkness, high salt, starvation, dehydration, limited space.

Special Talents

Psychrophile. I like to live at extremely cold temperatures, as low as -10°C (14°F).



Picrophilus torridus

"Burning paint"

What challenges can I survive?

Acidic pH, high temperature.

Special Talents

Acidophile. I can grow best in very acidic conditions (pH 0); Water has a pH of 7.



Thellungiella salsa "Saltwater cress"

Who am I?

A Eukaryote (Plant – Angiosperm)

Where do I live?

Salty environments, including salt flats in northern Canada and seashores of eastern China.



Antarctic Ice Fishes (25+ species)

Who am I?

Eukaryotes (Animal – Chordate)

Where do I live?

Southern Ocean surrounding Antarctica.



Tardigrade "Little water bear"

Who am I?

A Eukaryote (Animal)

Where do I live?

Wet environments, including hot springs, deep-ocean sediments, glaciers, fresh-water lakes, tropical forests, even the moss in your own backyard.



Thellungiella salsa "Saltwater cress"

What challenges can I survive?

High salt, cold temperatures, nutrient-poor soils, drought, flooding, toxic metals, short growing season

Special Talents

Halophile and psychrophile. I like to grow and reproduce in extremely salty soil and sub-zero temperatures.



Antarctic Ice Fishes (25+ species)

What challenges can I survive?

Cold temperature

Special Talents

Psychrophile. We like to live in very cold water, 1.5 to -1.8 °C (28 to 35°F).



Tardigrade "Little water bear"

What challenges can I survive?

Dehydration, extremely hot and cold temperatures

Special Talents

I can survive more extremes (temperature, pressure, radiation, dehydration) than any other organism. I can even survive outer space.

