



Welcome to the IGB

CARL R. WOESE INSTITUTE FOR GENOMIC BIOLOGY
WHERE SCIENCE MEETS SOCIETY



Welcome!

We are excited to have you join the Carl R. Woese Institute for Genomic Biology (IGB).

The following slides outline some general information, contacts, and services provided by the IGB. For more detailed information please visit our website at www.igb.illinois.edu.



IGB MISSION

TO ADVANCE LIFE SCIENCE
RESEARCH AND STIMULATE
BIOECONOMIC DEVELOPMENT.

IGB NUMBERS

2007

INSTITUTE ESTABLISHED

752%

16 YEAR ROI

\$639M

TOTAL FUNDING

5Y

REVIEW CYCLE

43

LICENSES OPTIONED

39

PATENTS ISSUED

23

START-UP &
SMALL COMPANIES

203

PATENT APPLICATIONS

155

FACULTY

147

FACULTY
AFFILIATES

91

POSTDOCTORAL
RESEARCHERS

241

GRADUATE
STUDENTS

143

UNDERGRADUATE
STUDENTS

11

VISITING
RESEARCHERS

IGB RESEARCH



HEALTH &
WELLNESS



TECHNOLOGY &
SOCIETY

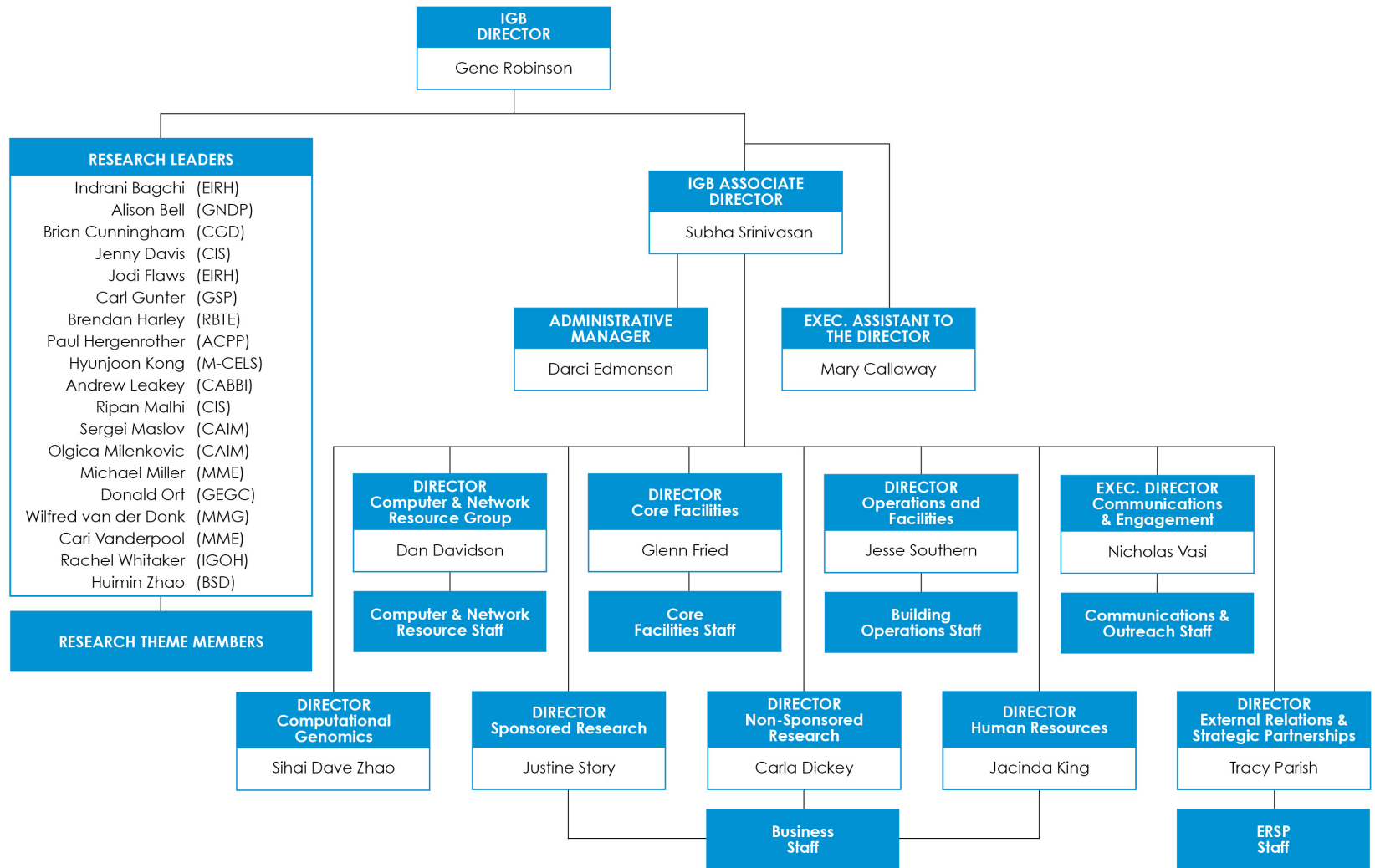


AGRICULTURE &
ENVIRONMENT



FUNDAMENTAL

IGB Organization



IGB RESEARCH PORTFOLIO

ONGOING STRATEGIC PARTNERSHIPS AND INITIATIVES



Center For Advanced Bioenergy and Bioproducts Innovation

Department of Energy in partnership with 16 universities and national labs



Genomics and Eco-evolution of Multi-scale Symbioses

Interdisciplinary Institute researching pollinator interaction model to understand impact and dynamics of nested microbes.



High Performance Biological Computing

Carver Biotechnology Center



Microbial Systems Initiative

Campus-wide effort in partnership with 8 departments



MOLECULE
MAKER LAB
INSTITUTE

Molecule Maker Lab Institute

Interdisciplinary initiative with leaders in AI and organic synthesis with Penn State and Rochester Institute of Technology



Personalized Nutrition Initiative

Partnership between IGB and the College of Agricultural, Consumer and Environmental Sciences (ACES)



Zeiss Labs@location Partnership

Zeiss Microscopy

Proposal Development Team

Services for grant submissions through IGB

Business Office

Create budget

Collect required items,
biosketches, forms, letters

Format, assemble, and submit
proposal

Outreach

Programs, camps, after-
school activities, hands-on
genomics lessons

Communications

Grant editing assistance

Web planning
and development

Proposal graphics

Criteria

Proposals must be multi-PI
and run through IGB

Visit

[www.igb.illinois.edu/grant-
resources](http://www.igb.illinois.edu/grant-resources) for full info



T. Parish
*Director,
External Relations*



Advancement

Work with
OVCIA-OVCRI Liaison

Emphasize corporate and
foundation relations

Develop new funding
sources from outreach
activities

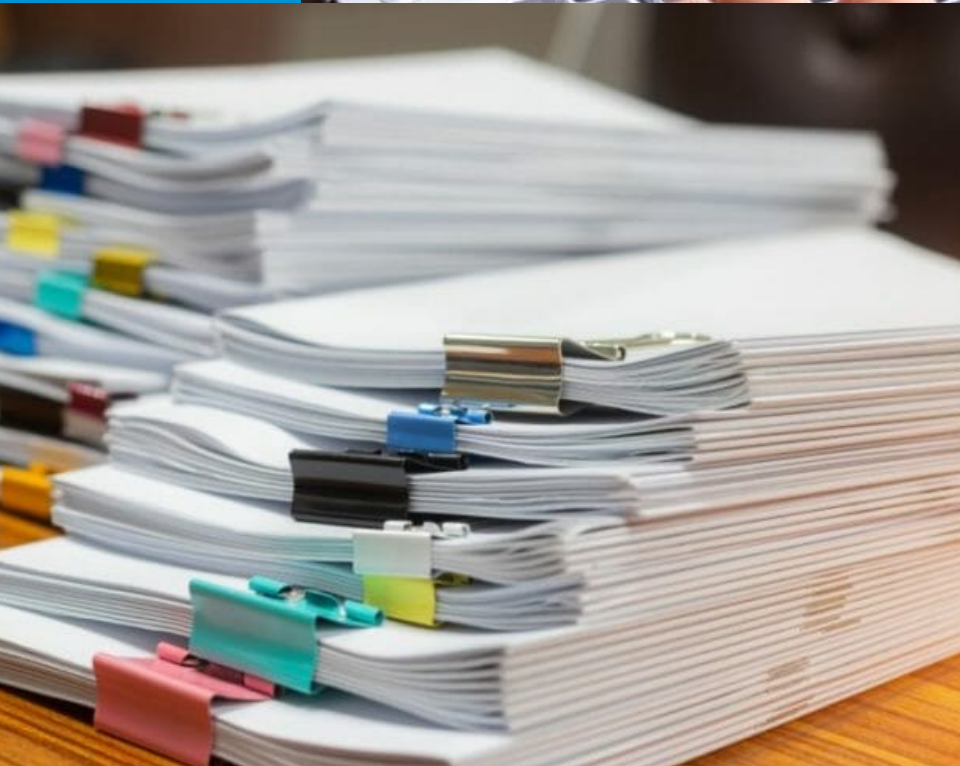




J. Story
Director, Budget &
Res. Planning

Budget and Resource Planning

- Grants and Contracts
- Budgets
- Proposal Development Team
- Proposal assembly, formatting, and submission





N. Vasi
Exec. Dir, Comm
& Engagement



Communications Group Services

- Website Design and Build
- Event / Outreach Support
- Science Journalism
- Media Distribution
 - EurekAlert
 - News Bureau / Home Dept.
 - Social Media
- Grant Support
 - Edit and review



Dan Davidson
Director, CNRG



Computer and Network Resource Group (CNRG) IT Services

- Consulting
- High Performance Computing (Biocluster)
- Computer Support and Analysis
- Desktop Backup
- Server Backup
- Archival storage - Bioarchive
- Poster Printing
- Audio Visual Support and Video Conferencing
- Computer Classroom
- Web Hosting
- HPC and Videoconferencing Training



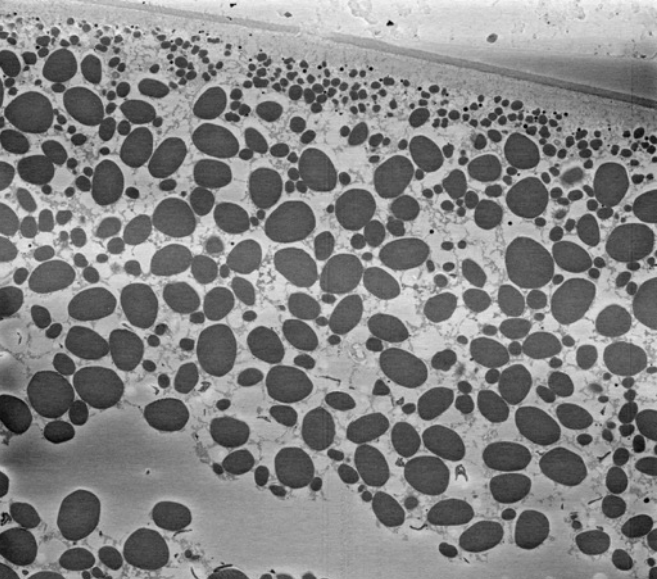
Diversity, Equity, and Inclusion

IGB Diversity Advisory Committee and Diversity Task Force strive to create a more inclusive, diverse and welcoming IGB environment

- DEI Speaker Seminar and Lunchbox Series
- Ally training workshops
- Climate survey
- Partnerships and programs
 - Pollen Power
 - Summer Internship for INdigenous People in Genomics (SING)
 - Illinois-Fisk University partnership



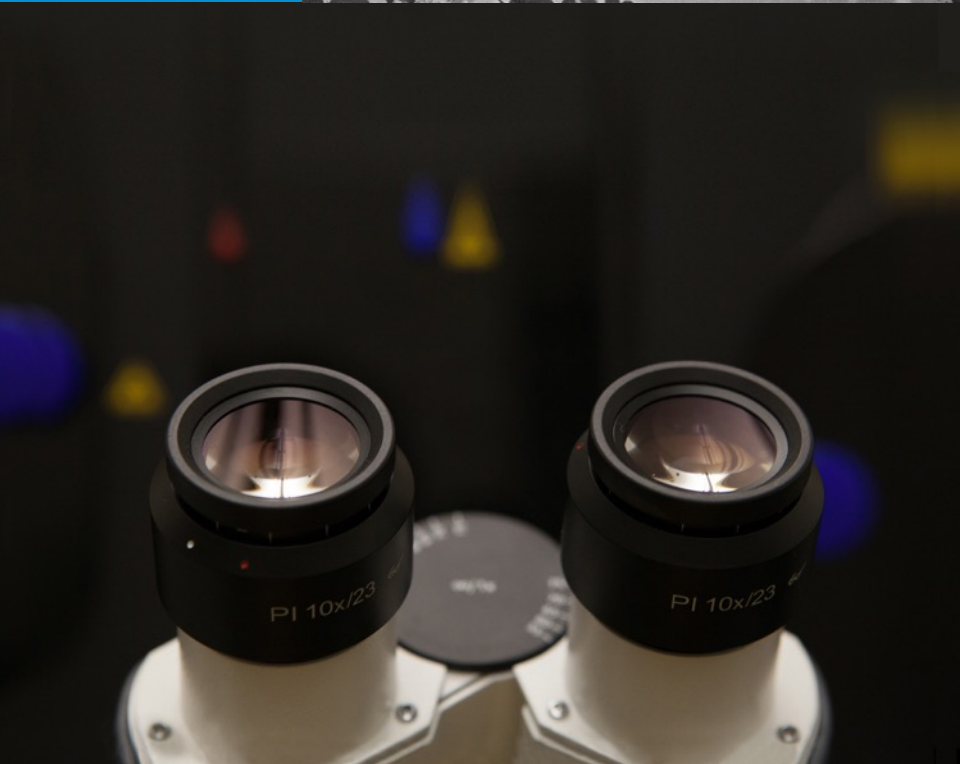
Glenn Fried
Director, Core
Facilities



IGB Core Facilities

Biological microscopy and image analysis

- High-end microscopy equipment
- User training
- Ongoing support, including experiment design and data interpretation
- Twenty-four hour access
- List of instruments at www.igb.illinois.edu/corefacilities/instruments





Outreach & Public Engagement Group

1. Support broader impacts for IGB grants
2. Interpret genomics for the public as part of our Land-Grant mission.
3. Build a network of individuals and organizations that are supportive of IGB's mission.
4. Provide training and professional development for IGB researchers.



C. Lutz
Outreach Activities
Manager

Nationally Recognized Program

Partners include:

- Champaign Unit 4 Public Schools
- Abbott Laboratories
- American Association for the Advancement of Science
- Field Museum of Chicago
- National Academy of Sciences
- National Courts and Sciences Institute
- National Institutes of Health

Programs include:

- IGB At-Home
- Art of Science exhibits
- Genome Day
- Genomics forTM Judges, Physicians, Teachers, Journalists, Faith Leaders
- World of Genomics



Fellowship Opportunities

IGB Fellows

Typically 2 years

Fellow works within theme

Research ideally overlaps with
2-3 other themes

Graduate Student Fellowships

Loustaunau Graduate Travel
Fellowship for Computational
Genomics

Kleinmuntz Center Young
Innovator Program

Undergraduate Student Fellowships

Carl R. Woese
Undergraduate Research
Scholar

Mark Tracy Undergraduate
Translational Research
Fellowship

All Opportunities

Visit

www.igb.illinois.edu/acquainted/fellowship-opportunities



Recurring IGB Events

- IGB Seminar Series
 - Faculty Spotlight Lectures
 - Tuesday Seminars
 - Pioneers in Genomic Biology
 - Fox Family Innovation and Entrepreneurship Lectures
 - Lunch with the Core
 - Chambana Science Café
- Theme Hops
 - Multi-theme networking
- Weekly news and event digest email every Friday

Helpful Contacts

- Associate Director – Subha Srinivasan: ssubha@illinois.edu
- Building issues: facilities@igb.illinois.edu
- Building keys/card access: facilities@igb.illinois.edu
- Communications – Nicholas Vasi: nvasi@illinois.edu
- Core Facilities Microscopy Suite – Glenn Fried: gfried@illinois.edu
- Event support – Darci Edmonson: darci@illinois.edu
- External Relations – Tracy Parish: tparish@illinois.edu
- Grants – Justine Story: jruddian@illinois.edu
- Human Resources: hr@igb.illinois.edu
- IT Support: help@igb.illinois.edu
- Outreach and Engagement – Claudia Lutz: cclutz2@illinois.edu
- Purchases, P-card/T-card: purchasing@igb.illinois.edu

Thank you for
joining the IGB.

I ILLINOIS IGB



igb.illinois.edu



[@IGBillinois](https://twitter.com/IGBillinois)



info-igb@illinois.edu