



Welcome to the IGB

CARL R. WOESE INSTITUTE FOR GENOMIC BIOLOGY
WHERE SCIENCE MEETS SOCIETY



Welcome!

We are excited to have you join the Carl R. Woese Institute for Genomic Biology (IGB).

The following slides outline some general information, contacts, and services provided by the IGB. For more detailed information please visit our website at www.igb.illinois.edu.



MISSION

TO ADVANCE LIFE SCIENCE
RESEARCH AND STIMULATE
BIOECONOMIC DEVELOPMENT.

IGB NUMBERS

2007

INSTITUTE ESTABLISHED

593%

14 YEAR ROI

\$520M

TOTAL FUNDING

5Y

REVIEW CYCLE

35

LICENSES OPTIONED

34

PATENTS ISSUED

22

START-UP &
SMALL COMPANIES

155

PATENT APPLICATIONS

84

FACULTY

133

FACULTY
AFFILIATES

122

POSTDOCTORAL
RESEARCHERS

301

GRADUATE
STUDENTS

135

UNDERGRADUATE
STUDENTS

14

VISITING
RESEARCHERS

IGB RESEARCH



HEALTH



TECHNOLOGY

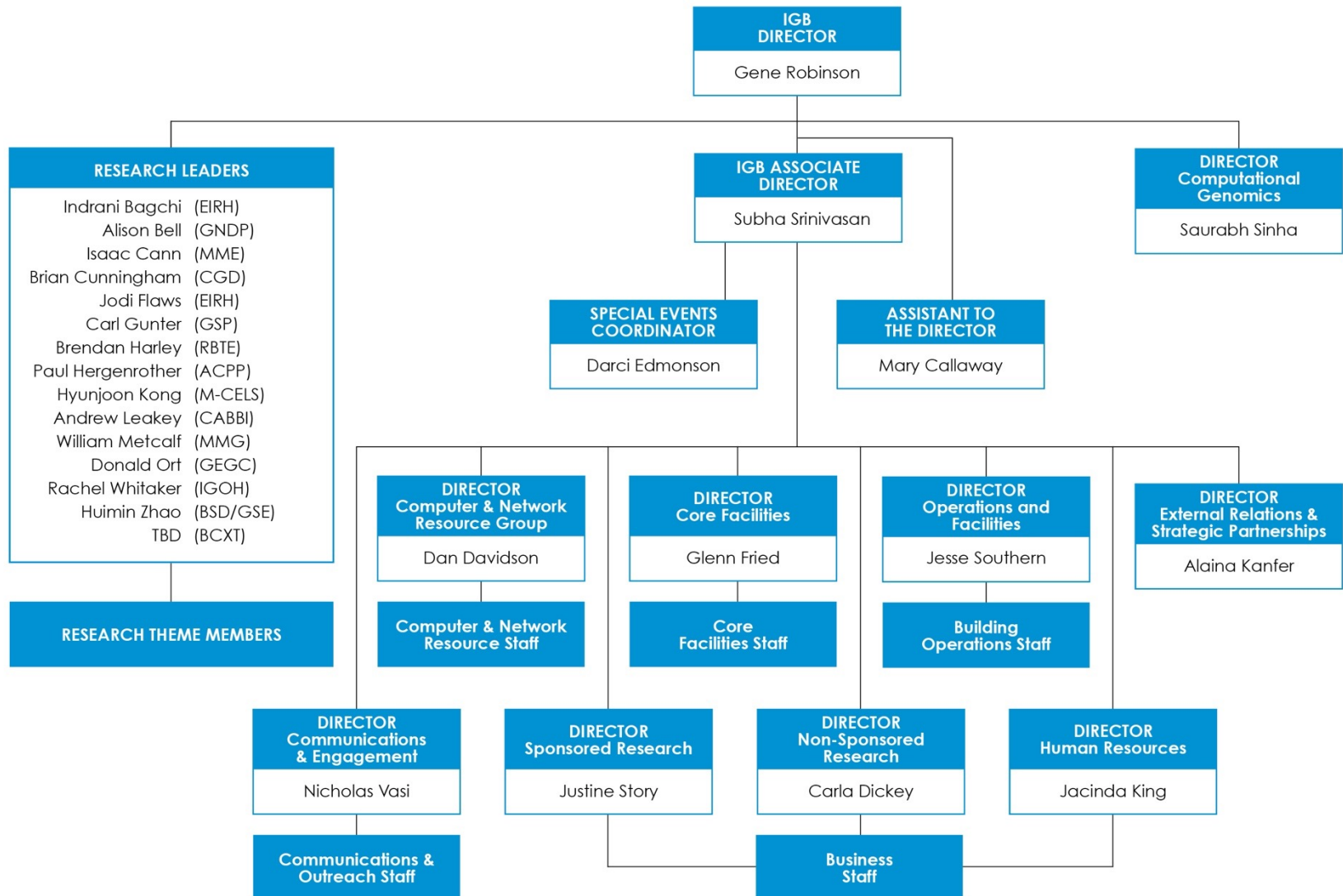


ENVIRONMENT



FUNDAMENTAL

IGB Organization



IGB RESEARCH PORTFOLIO

ONGOING STRATEGIC PARTNERSHIPS AND INITIATIVES

CENTER FOR ADVANCED BIOENERGY AND BIOPRODUCTS INNOVATION

Department of Energy in partnership with 16 universities and national labs



HPCBio—HIGH PERFORMANCE BIOLOGICAL COMPUTING

Carver Biotechnology Center

HPCBio

MICROBIAL SYSTEMS INITIATIVE

Campus-wide effort in partnership with 8 departments

MSI

MOLECULE MAKER LAB INSTITUTE

Interdisciplinary initiative with leaders in AI and organic synthesis with Penn State and Rochester Institute of Technology



**MOLECULE
MAKER LAB
INSTITUTE**

PERSONALIZED NUTRITION INITIATIVE

Partnership between IGB and the College of Agricultural, Consumer and Environmental Sciences (ACES)

PNI

ZEISS LABS@LOCATION PARTNERSHIP

Zeiss Microscopy



Proposal Development Team

Services for grant submissions through IGB

Business Office

Create budget

Collect required items,
biosketches, forms, letters

Format, assemble, and submit
proposal

Outreach

Programs, camps, after-
school activities, hands-on
genomics lessons

Communications

Grant editing assistance

Web planning
and development

Proposal graphics

Criteria

Proposals must be multi-PI
and run through IGB

Visit

[www.igb.illinois.edu/grant-
resources](http://www.igb.illinois.edu/grant-resources) for full info



A. Kanfer
Director,
External Relations



Advancement

Work with
OVCIA-OVCRI Liaison

Emphasize corporate and
foundation relations

Develop new funding
sources from outreach
activities





N. Vasi
Director, Comm
& Engagement



BIOMARKER

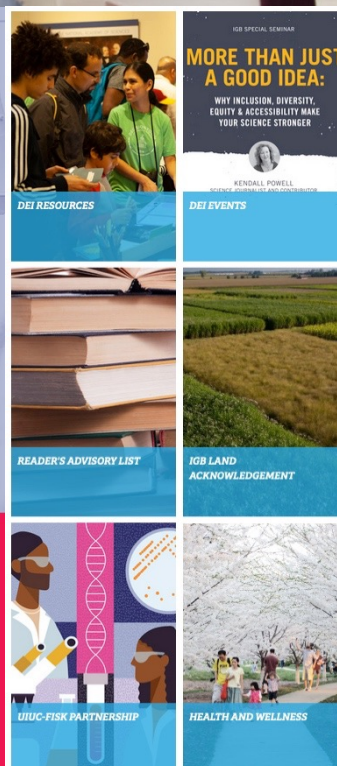
magazine

Winter 2020, vol. 14

Carl R. Woese
Institute for Genomic Biology



DIANA
RANOA



MORE THAN JUST A GOOD IDEA:

WHY INCLUSION, DIVERSITY,
EQUITY & ACCESSIBILITY MAKE
YOUR SCIENCE STRONGER

KENDALL POWELL
KENDALL POWELL, DIRECTOR OF COMMUNICATIONS & ENGAGEMENT

DEI RESOURCES

DEI EVENTS

READER'S ADVISORY LIST

IGB LAND
ACKNOWLEDGEMENT

UIUC-FISK PARTNERSHIP

HEALTH AND WELLNESS

Communications Group Services

- Website Design and Build
- Event / Outreach Support
- Science Journalism
- Media Distribution
 - EurekaAlert
 - News Bureau / Home Dept.
 - Social Media
- Grant Support
 - Edit and review



Dan Davidson
Director, CNRG



Computer and Network Resource Group (CNRG) IT Services

- Consulting
- High Performance Computing (Biocluster)
- Computer Support and Analysis
- Desktop Backup
- Server Backup
- Archival storage - Bioarchive
- Poster Printing
- Audio Visual Support and Video Conferencing
- Computer Classroom
- Web Hosting
- HPC and Videoconferencing Training



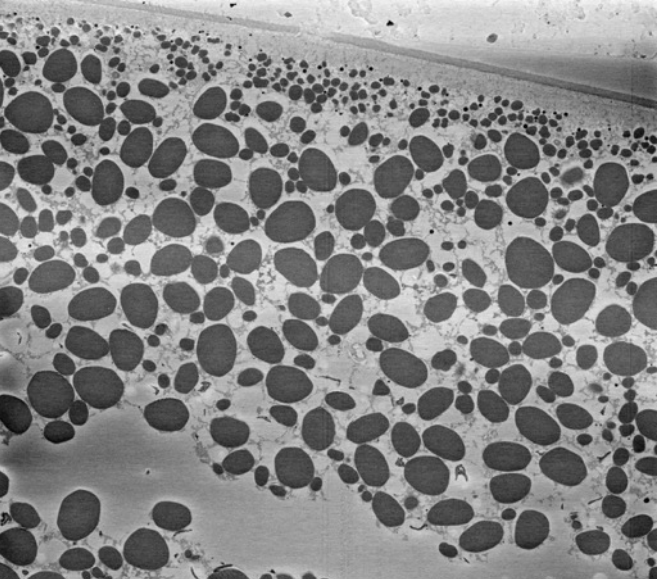
Diversity, Equity, and Inclusion

IGB Committee on Diversity (COD) and Committee on Diversity Task Force (CODTF) strive to create a more inclusive, diverse and welcoming IGB environment

- DEI Speaker Seminar and Lunchbox Series
- Ally training workshops
- Climate survey
- Partnerships and programs
 - Pollen Power
 - Summer Internship for INdigenous People in Genomics (SING)
 - Illinois-Fisk University partnership



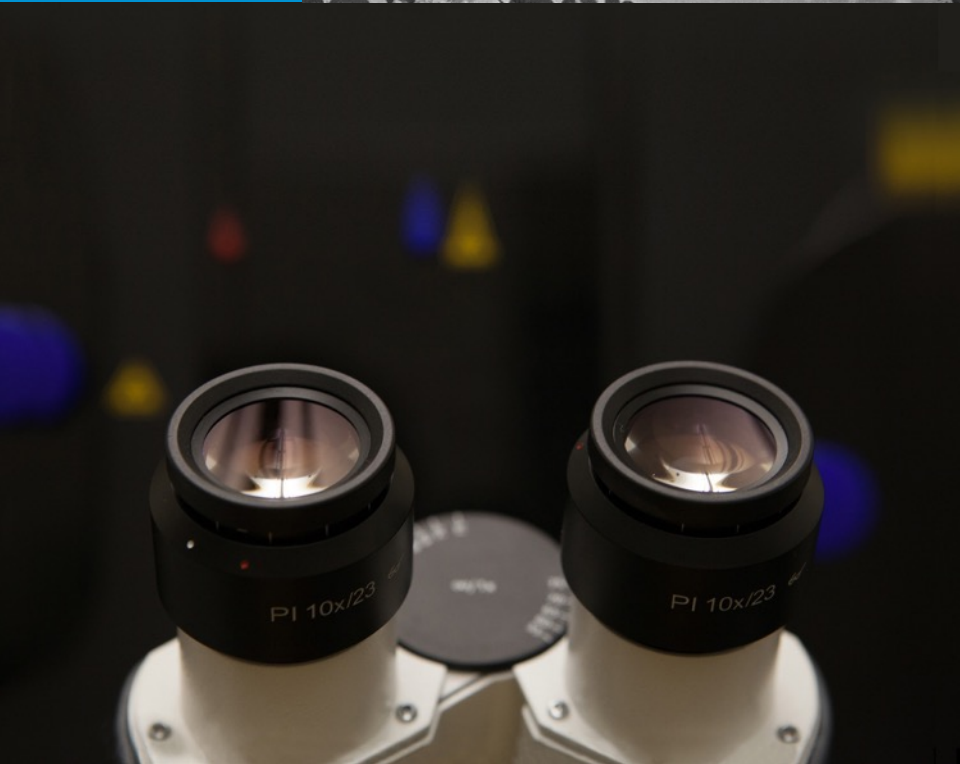
Glenn Fried
Director, Core
Facilities



IGB Core Facilities

Biological microscopy and image analysis

- High-end MICROSCOPY equipment
- User training
- Ongoing support, including experiment design and data interpretation
- Twenty-four hour access
- List of instruments at www.igb.illinois.edu/corefacilities/instruments





Outreach & Public Engagement Group

1. Support broader impacts for IGB grants
2. Interpret genomics for the public as part of our Land-Grant mission.
3. Build a network of individuals and organizations that are supportive of IGB's mission.
4. Provide training and professional development for IGB researchers.



C. Lutz
Outreach Activities
Manager



Nationally Recognized Outreach Programs

Partners include:

- Champaign Unit 4 Public Schools
- Abbott Laboratories
- American Association for the Advancement of Science
- Field Museum of Chicago
- National Academy of Sciences
- National Courts and Sciences Institute
- National Institutes of Health

Programs include:

- Art of Science exhibits
- Genome Day
- Genomics forTM Judges, Physicians, Teachers, Journalists and more
- World of Genomics

Fellowship Opportunities

IGB Fellows

Typically 2 years

Fellow works within theme

Research ideally overlaps with
2-3 other themes

Graduate Student Fellowships

Loustaunau Graduate Travel
Fellowship for Computational
Genomics

Kleinmuntz Center Young
Innovator Program

Undergraduate Student Fellowships

Carl R. Woese
Undergraduate Research
Scholar

Mark Tracy Undergraduate
Translational Research
Fellowship

All Opportunities

Visit

www.igb.illinois.edu/acquainted/fellowship-opportunities



Paradise Genomics Disruptive Technology

PGI Focus

- Gene Expression
- Whole Genome Discovery
- Multi-gene Bioprofiles
- Small amounts of blood or tissue
- White Blood cell response to disease
- Maximal sensitivity for discovery
- Rapid discovery to clinic

VS

Typical Diagnostic Approach

- Genotyping, NGS, or protein analysis
- Limited biomarker discovery
- Individual biomarkers
- Circulating tumor/diseased cells
- Epigenetics, exosomes, miRNA, etc.
- Serum protein biomarkers from diseased tissue



Recurring IGB Events

- IGB Seminar Series
 - Faculty Spotlight Lectures
 - Tuesday Seminars
 - Pioneers in Genomic Biology
 - Fox Family Innovation and Entrepreneurship Lectures
 - Lunch with the Core
 - Chambana Science Café
- Theme Hops
 - Multi-theme networking
- Weekly news and event digest email every Friday

Helpful Contacts

- Associate Director – Subha Srinivasan: ssubha@illinois.edu
- Building issues: facilities@igb.illinois.edu
- Building keys/card access: facilities@igb.illinois.edu
- Communications – Nicholas Vasi: nvasi@illinois.edu
- Core Facilities Microscopy Suite – Glenn Fried: gfried@illinois.edu
- Event support – Darci Edmonson: darci@illinois.edu
- External Relations – Alaina Kanfer: akanfer@illinois.edu
- Grants – Justine Story: jruddian@illinois.edu
- Human Resources: hr@igb.illinois.edu
- IT Support: help@igb.illinois.edu
- Outreach and Engagement – Claudia Lutz: cclutz2@illinois.edu
- Purchases, P-card/T-card: purchasing@igb.illinois.edu

Thank you for
joining the IGB.

I ILLINOIS IGB



igb.illinois.edu



[@IGBillinois](https://twitter.com/IGBillinois)



info-igb@illinois.edu