



# Welcome to the IGB

CARL R. WOESE INSTITUTE FOR GENOMIC BIOLOGY  
WHERE SCIENCE MEETS SOCIETY



# Welcome!

We are excited to have you join the Carl R. Woese Institute for Genomic Biology (IGB).

The following slides outline some general information, contacts, and services provided by the IGB. For more detailed information please visit our website at [www.igb.illinois.edu](http://www.igb.illinois.edu).



## MISSION

TO ADVANCE LIFE SCIENCE  
RESEARCH AND STIMULATE  
BIOECONOMIC DEVELOPMENT.

## IGB NUMBERS

2007

INSTITUTE ESTABLISHED

593%

14 YEAR ROI

\$520M

TOTAL FUNDING

5Y

REVIEW CYCLE

35

LICENSES OPTIONED

34

PATENTS ISSUED

22

START-UP &  
SMALL COMPANIES

155

PATENT APPLICATIONS

93

FACULTY

121

FACULTY  
AFFILIATES

131

POSTDOCTORAL  
RESEARCHERS

262

GRADUATE  
STUDENTS

114

UNDERGRADUATE  
STUDENTS

15

VISITING  
RESEARCHERS

## IGB RESEARCH



HEALTH



TECHNOLOGY

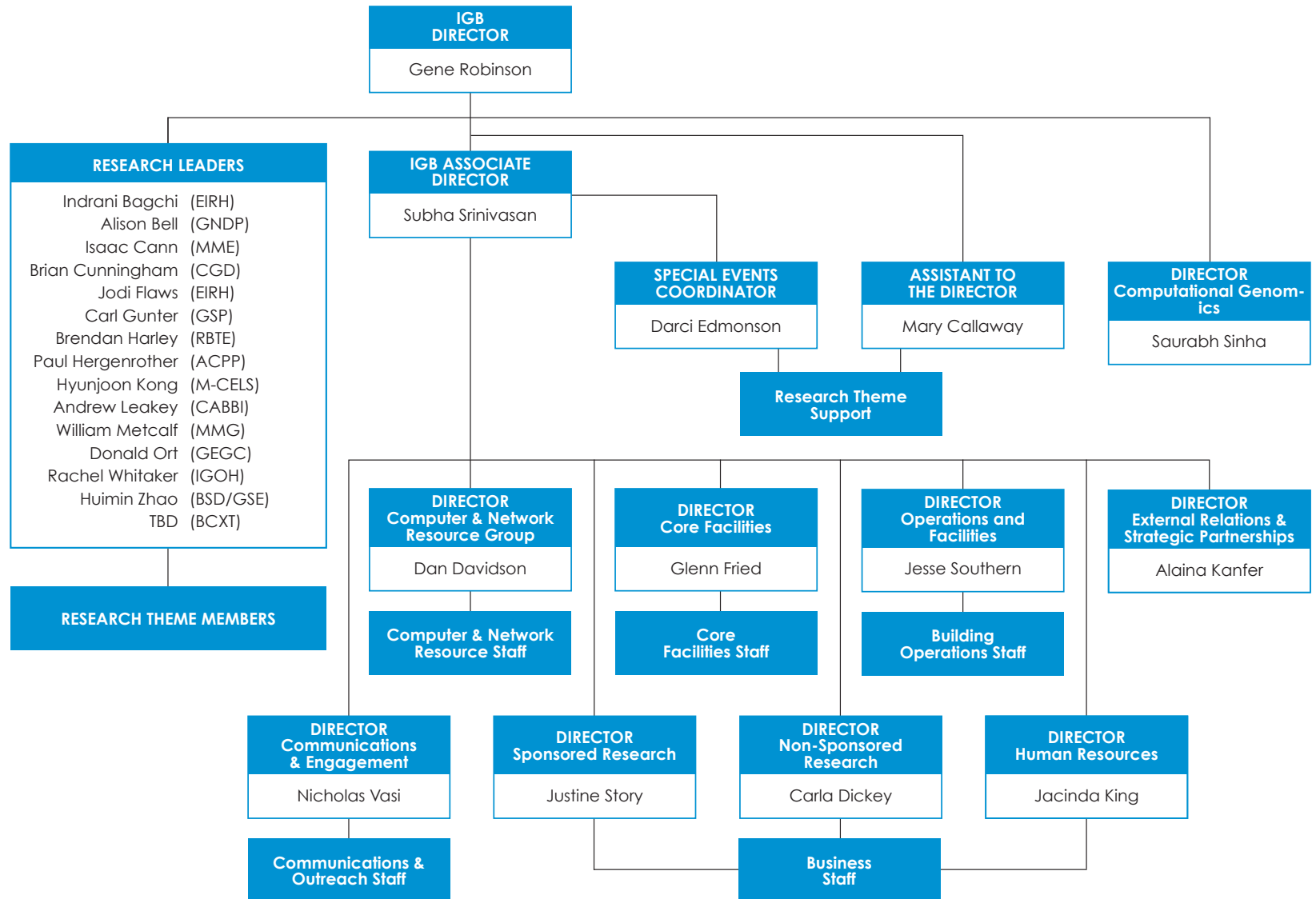


ENVIRONMENT



FUNDAMENTAL

# IGB Organization



## IGB RESEARCH PORTFOLIO

### ONGOING STRATEGIC PARTNERSHIPS AND INITIATIVES

#### **CENTER FOR ADVANCED BIOENERGY AND BIOPRODUCTS INNOVATION**

Department of Energy in partnership with 16 universities and national labs



#### **HPCBio—HIGH PERFORMANCE BIOLOGICAL COMPUTING**

Carver Biotechnology Center

## HPCBio

#### **MICROBIAL SYSTEMS INITIATIVE**

Campus-wide effort in partnership with 8 departments

## MSI

#### **MOLECULE MAKER LAB INSTITUTE**

Interdisciplinary initiative with leaders in AI and organic synthesis with Penn State and Rochester Institute of Technology



**MOLECULE  
MAKER LAB  
INSTITUTE**

#### **PERSONALIZED NUTRITION INITIATIVE**

Partnership between IGB and the College of Agricultural, Consumer and Environmental Sciences (ACES)

## PNI

#### **ZEISS LABS@LOCATION PARTNERSHIP**

Zeiss Microscopy



# Proposal Development Team

## Services for grant submissions through IGB

### **Business Office**

Create budget

Collect required items,  
biosketches, forms, letters

Format, assemble, and submit  
proposal

### **Outreach**

Programs, camps, after-  
school activities, hands-on  
genomics lessons

### **Communications**

Grant editing assistance

Web planning  
and development

Proposal graphics

### **Criteria**

Proposals must be multi-PI  
and run through IGB

Visit

[www.igb.illinois.edu/grant-  
resources](http://www.igb.illinois.edu/grant-resources) for full info





A. Kanfer  
Director,  
External Relations



## Advancement

Work with  
OVCIA-OVCRI Liaison

Emphasize corporate and  
foundation relations

Develop new funding  
sources from outreach  
activities







N. Vasi  
Director, Comm  
& Engagement



# BIOMARKER

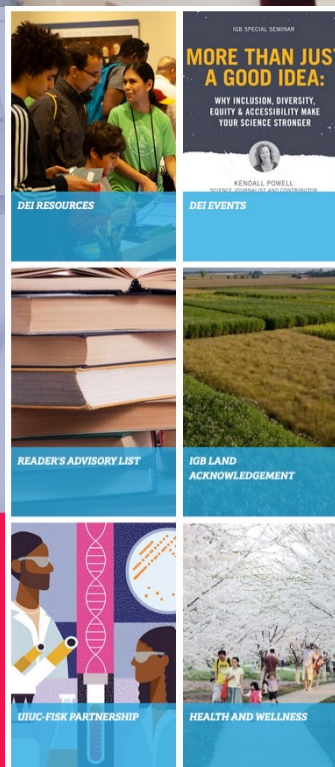
magazine

Winter 2020, vol. 14

Carl R. Woese  
Institute for Genomic Biology



DIANA  
RANOA



DEI RESOURCES

## MORE THAN JUST A GOOD IDEA:

WHY INCLUSION, DIVERSITY,  
EQUITY & ACCESSIBILITY MAKE  
YOUR SCIENCE STRONGER

KENDALL POWELL

DEI EVENTS

READER'S ADVISORY LIST

IGB LAND  
ACKNOWLEDGEMENT

UIUC-FISK PARTNERSHIP

HEALTH AND WELLNESS

## Communications Group Services

- Website Design and Build
- Event / Outreach Support
- Science Journalism
- Media Distribution
  - EurekaAlert
  - News Bureau / Home Dept.
  - Social Media
- Grant Support
  - Edit and review



Dan Davidson  
Director, CNRG



# Computer and Network Resource Group (CNRG) IT Services

- Consulting
- High Performance Computing (Biocluster)
- Computer Support and Analysis
- Desktop Backup
- Server Backup
- Archival storage - Bioarchive
- Poster Printing
- Audio Visual Support and Video Conferencing
- Computer Classroom
- Web Hosting
- HPC and Videoconferencing Training





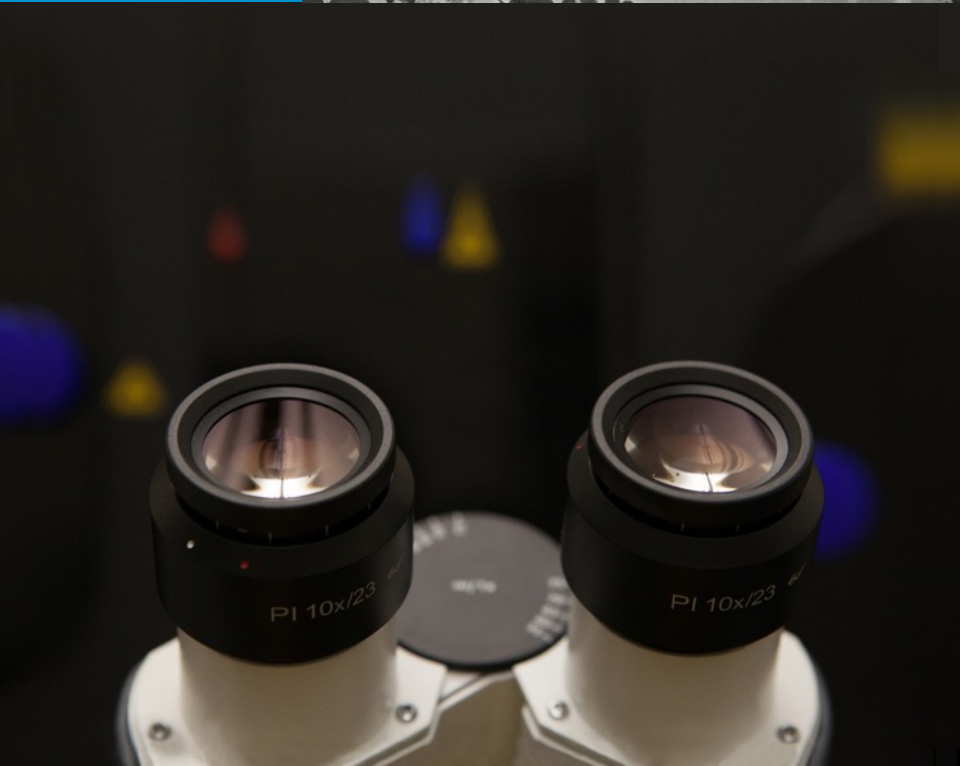
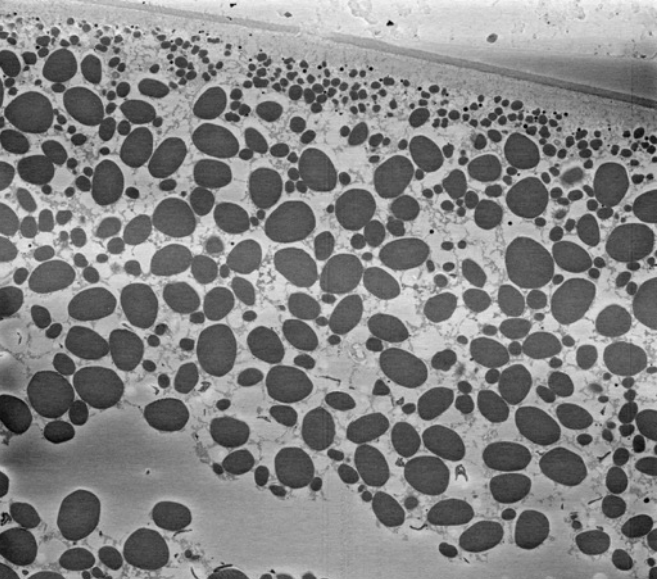
# Diversity, Equity, and Inclusion

IGB Committee on Diversity (COD) and Committee on Diversity Task Force (CODTF) strive to create a more inclusive, diverse and welcoming IGB environment

- DEI Speaker Seminar and Lunchbox Series
- Ally training workshops
- Climate survey
- Partnerships and programs
  - Pollen Power
  - Summer Internship for INdigenous People in Genomics (SING)
  - Illinois-Fisk University partnership



Glenn Fried  
Director, Core  
Facilities



## IGB Core Facilities

### Biological microscopy and image analysis

- High-end MICROSCOPY equipment
- User training
- Ongoing support, including experiment design and data interpretation
- Twenty-four hour access
- List of instruments at [www.igb.illinois.edu/corefacilities/instruments](http://www.igb.illinois.edu/corefacilities/instruments)





# Outreach & Public Engagement Group

1. Support broader impacts for IGB grants
2. Interpret genomics for the public as part of our Land-Grant mission.
3. Build a network of individuals and organizations that are supportive of IGB's mission.
4. Provide training and professional development for IGB researchers.



C. Lutz  
Outreach Activities  
Manager

# Nationally Recognized Outreach Programs

Partners include:

- Champaign Unit 4 Public Schools
- Abbott Laboratories
- American Association for the Advancement of Science
- Field Museum of Chicago
- National Academy of Sciences
- National Courts and Sciences Institute
- National Institutes of Health

Programs include:

- Art of Science exhibits
- Genome Day
- Genomics for<sup>TM</sup> Judges, Physicians, Teachers, Journalists and more
- World of Genomics



# Fellowship Opportunities

## **IGB Fellows**

Typically 2 years

Fellow works within theme

Research ideally overlaps with  
2-3 other themes

## **Graduate Student Fellowships**

Loustaunau Graduate Travel  
Fellowship for Computational  
Genomics

Kleinmuntz Center Young  
Innovator Program

## **Undergraduate Student Fellowships**

Carl R. Woese  
Undergraduate Research  
Scholar

Mark Tracy Undergraduate  
Translational Research  
Fellowship

## **All Opportunities**

Visit

[www.igb.illinois.edu/acquainted/fellowship-opportunities](http://www.igb.illinois.edu/acquainted/fellowship-opportunities)





## Paradise Genomics Disruptive Technology

### PGI Focus

- Gene Expression
- Whole Genome Discovery
- Multi-gene Bioprofiles
- Small amounts of blood or tissue
- White Blood cell response to disease
- Maximal sensitivity for discovery
- Rapid discovery to clinic

VS

### Typical Diagnostic Approach

- Genotyping, NGS, or protein analysis
- Limited biomarker discovery
- Individual biomarkers
- Circulating tumor/diseased cells
- Epigenetics, exosomes, miRNA, etc.
- Serum protein biomarkers from diseased tissue



# Recurring IGB Events

- IGB Seminar Series
  - Faculty Spotlight Lectures
  - Tuesday Seminars
  - Pioneers in Genomic Biology
  - Fox Family Innovation and Entrepreneurship Lectures
  - Lunch with the Core
  - Chambana Science Café
- Theme Hops
  - Multi-theme networking
- Weekly news and event digest email every Friday

# Helpful Contacts

- Associate Director – Subha Srinivasan: [ssubha@illinois.edu](mailto:ssubha@illinois.edu)
- Building issues: [facilities@igb.illinois.edu](mailto:facilities@igb.illinois.edu)
- Building keys/card access: [facilities@igb.illinois.edu](mailto:facilities@igb.illinois.edu)
- Communications – Nicholas Vasi: [nvasi@illinois.edu](mailto:nvasi@illinois.edu)
- Core Facilities Microscopy Suite – Glenn Fried: [gfried@illinois.edu](mailto:gfried@illinois.edu)
- Event support – Darci Edmonson: [darci@illinois.edu](mailto:darci@illinois.edu)
- External Relations – Alaina Kanfer: [akanfer@illinois.edu](mailto:akanfer@illinois.edu)
- Grants – Justine Story: [jruddian@illinois.edu](mailto:jruddian@illinois.edu)
- Human Resources: [hr@igb.illinois.edu](mailto:hr@igb.illinois.edu)
- IT Support: [help@igb.illinois.edu](mailto:help@igb.illinois.edu)
- Outreach and Engagement – Claudia Lutz: [cclutz2@illinois.edu](mailto:cclutz2@illinois.edu)
- Purchases, P-card/T-card: [purchasing@igb.illinois.edu](mailto:purchasing@igb.illinois.edu)

Thank you for  
joining the IGB.

**I** ILLINOIS IGB



[igb.illinois.edu](http://igb.illinois.edu)

---



[@IGBillinois](https://twitter.com/IGBillinois)

---



[info-igb@illinois.edu](mailto:info-igb@illinois.edu)